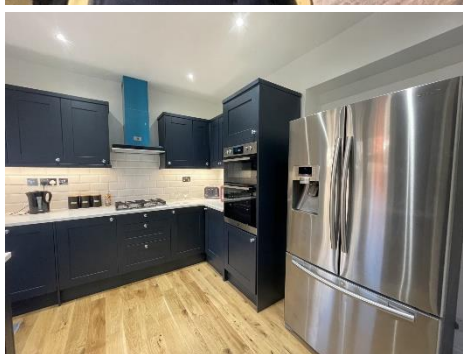


MAPESBURY



Park Avenue, Willesden Green, NW2

£725,000

- Ground Floor Flat
- High Ceilings
- Communal Gardens
- 5 Mins to Jubilee
- 3 Bed|2 Bath
- Offered Chain-Free
- No Service Charge
- Share of Freehold



Ground Floor Park Avenue

Approximate Gross Internal Area = 883 sq ft / 82.0 sq m
(Excluding Reduced Headroom)
Reduced Headroom = 15 sq ft / 1.4 sq m
Total = 898 sq ft / 83.4 sq m