



## Roundwood Road, Willesden, NW10 **£400,000 Offers Over**

- 2 Bed|1 Bath|1 Rec
- South Facing Garden
- Conservatory
- Potential to Extend
- High Ceilings
- Close to Roundwood Park
- Bay Windows
- No Service Charge

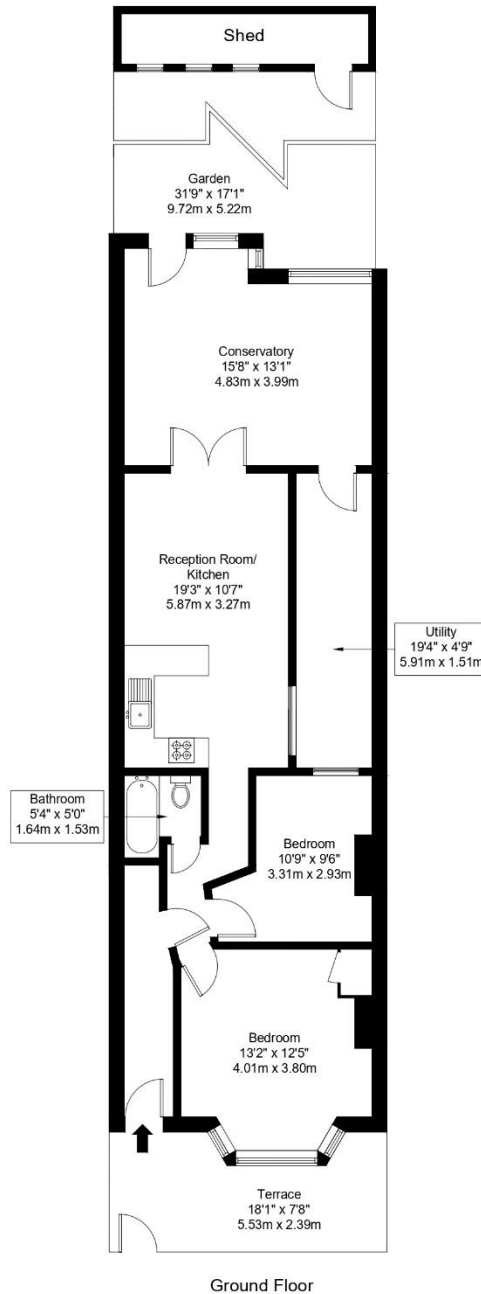
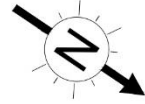
# Roundwood Road, NW10 9TJ

Approx Gross Internal Area = 64.52 sq m / 694 sq ft

Garden = 51.37 sq m / 552 sq ft

Terrace = 11.64 sq m / 125 sq ft

Total = 127.53 sq m / 1372 sq ft



Ref :

Copyright **BLEU  
PLAN**

The Floor plan is not to scale and measurements and areas shown are approximate and therefore should be used for illustrative purposes only. The plan has been prepared in accordance with the RICS code of Measuring Practice and whilst we have confidence in the information produced it must not be relied on. If there is any aspect of particular importance, you should carry out or commission your own inspection of the property.

Copyright @ BLEUPLAN