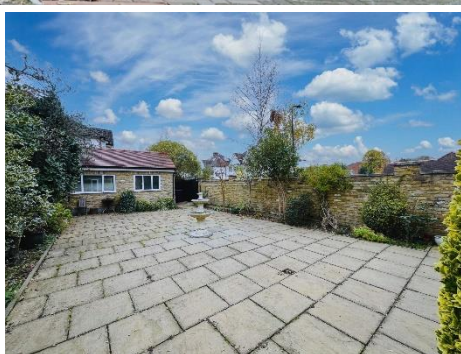


MAPESBURY

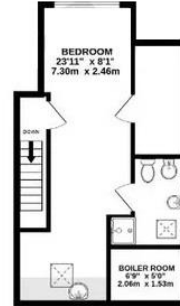


Anson Road, Willesden Green, NW2

£1,550,000

- Semi Detached
- Corner Plot
- Bay Windows
- Close to Schools
- 4 Bed|4 Bath
- Extended|Loft
- Double-Aspect
- Freehold

MAPESBURY



TOTAL FLOOR AREA : 2540sq.ft. (236.0 sq.m.) approx.