



**North Circular Road, Neasden, NW2**

Must be seen £350,000 | 3 Rooms | 2 WC

**MAPESBURY**



**Must be seen £350,000**

**Freehold**

- Ground Floor Office Space
- Parking Space
- Spacious Interiors
- Close to North Circular A406/M1
- Size: 646 Sq Ft
- 3 Separate Rooms
- Ideal for Studio/Office/Retail
- Close to Brent Cross
- Excellent Connectivity
- Freehold

Office Space ideally located within Neasden with easy reach of the M1, North Circular Road A406, Brent Cross and Staples Corner.

The Office Space comprises of 1 main room, 2nd room and a 3rd rear room that has been partitioned for sound recording. Further comprises of kitchen and 2 separate toilet WC's.

There is Parking also available (designated front parking and communal rear parking).

Size: 680 Sq. Ft. (63.2 Sq M)

Bus Links: 112, 182, 245, 332

Train Links: Neasden (Jubilee Line)

Airports:

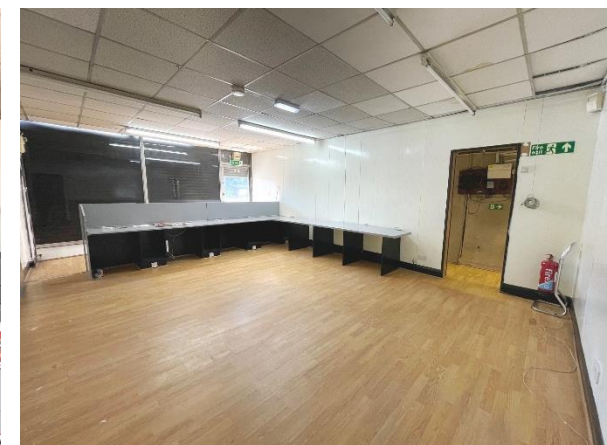
Luton Airport (30 minutes)

London Heathrow Airport (45 minutes)

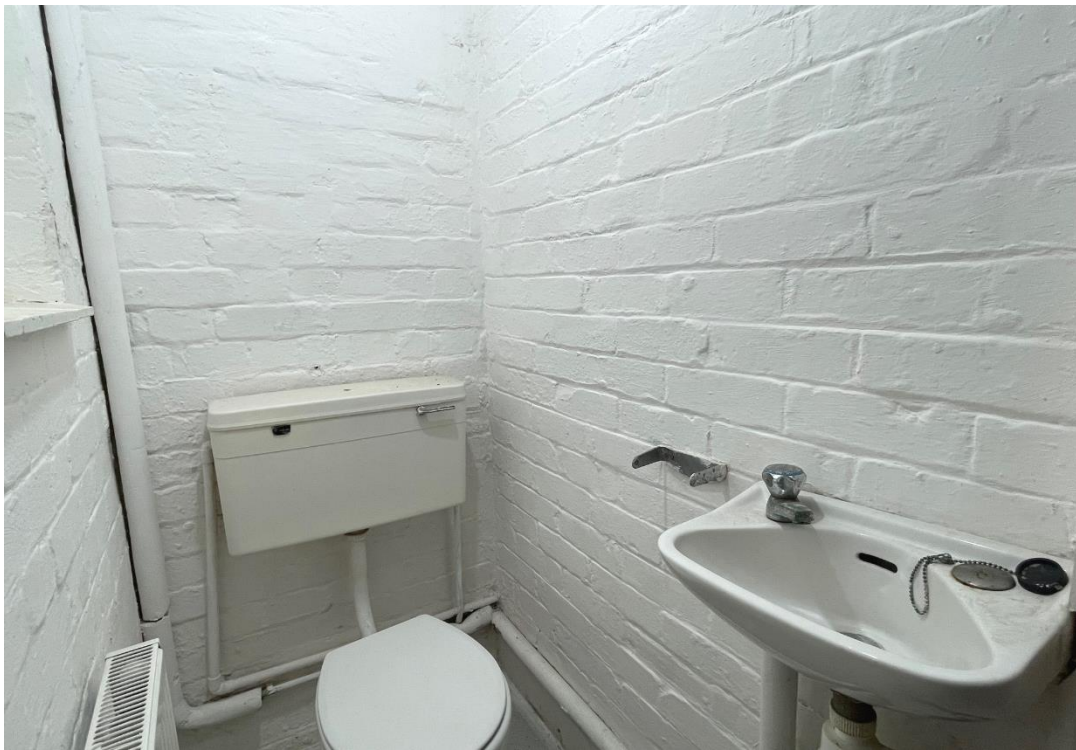
London City Airport (1 hour)

London Stanstead (1 Hour 10 Minutes)

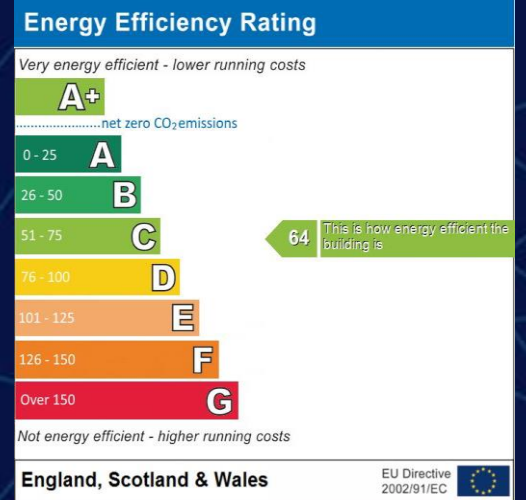
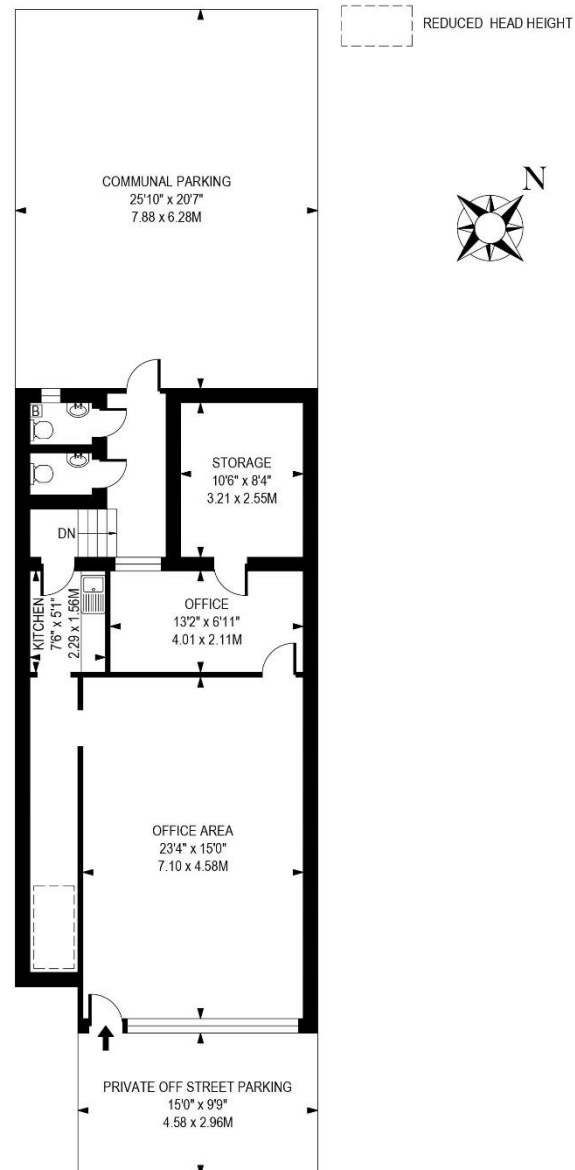
London Gatwick (1 Hour 20 Minutes)







**647 NORTH CIRCULAR ROAD, NW2 7AY**  
**APPROXIMATE TOTAL INTERNAL FLOOR AREA:**  
**680 SQ FT - 63.2 SQ M**



**MAPESBURY**

Mapesbury House  
 84 Walm Lane  
 Willesden  
 London  
 NW2 4QY

020 8451 8999  
 contact@mapesbury.co.uk

[mapesburyproperty.co.uk](http://mapesburyproperty.co.uk)

ILLUSTRATION FOR IDENTIFICATION PURPOSES ONLY, MEASUREMENTS ARE APPROXIMATE, NOT TO SCALE

THIS FLOOR PLAN SHOULD BE USED AS A GENERAL OUTLINE FOR GUIDANCE ONLY AND DOES NOT CONSTITUTE IN WHOLE OR IN PART AN OFFER OR CONTRACT.  
 ANY INTENDING PURCHASER OR LESSEE SHOULD SATISFY THEMSELVES BY INSPECTION, SEARCHES, ENQUIRIES AND FULL SURVEY AS TO THE CORRECTNESS OF EACH STATEMENT.