



Hendon Way, Childs Hill, NW2 2NR

Must be seen £399,950 | 2 Bed | 1 Bath | 1 Reception

MAPESBURY

Must be seen £399,950 Share of Freehold

- Ground Floor Flat
- Private Garden
- Luxury Bathroom
- Chain Free
- Close to Hampstead Swiss Cottage
- EPC Rating C
- 2 Bed | 1 Bath | 1 Rec
- Stylish Interiors
- Double Glazed | Gas Heating
- Calling First Time Buyers
- Close to Thameslink
- Council Tax: D

Stunning Modernised 2 Bedroom Garden flat Ideal for First Time Buyers is located in Child's Hill, Hendon Way NW2.

This highly modern ground floor flat boasts highly attractive interiors throughout and comprises of 2 spacious bright double bedrooms, a fully tiled bathroom featuring bath and shower as well as a fully fitted kitchen with dining area.

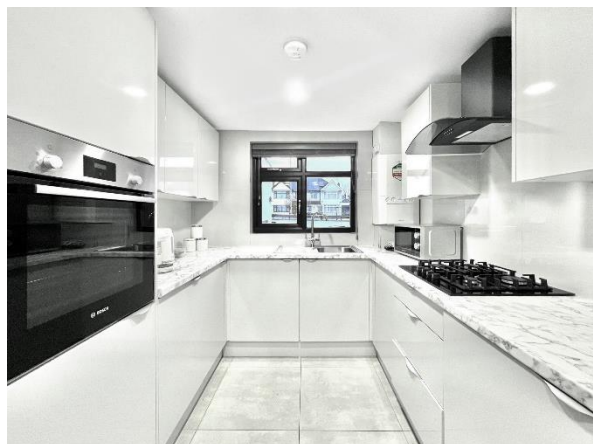
Further benefits from modern interiors as well as access to private garden as well as being in easy reach to transport links including Thameslink at Cricklewood and an array of Bus links to Swiss Cottage and Brent Cross.

Size: 672 Sq Ft (62.5 Sq M)
EPC: 77 C

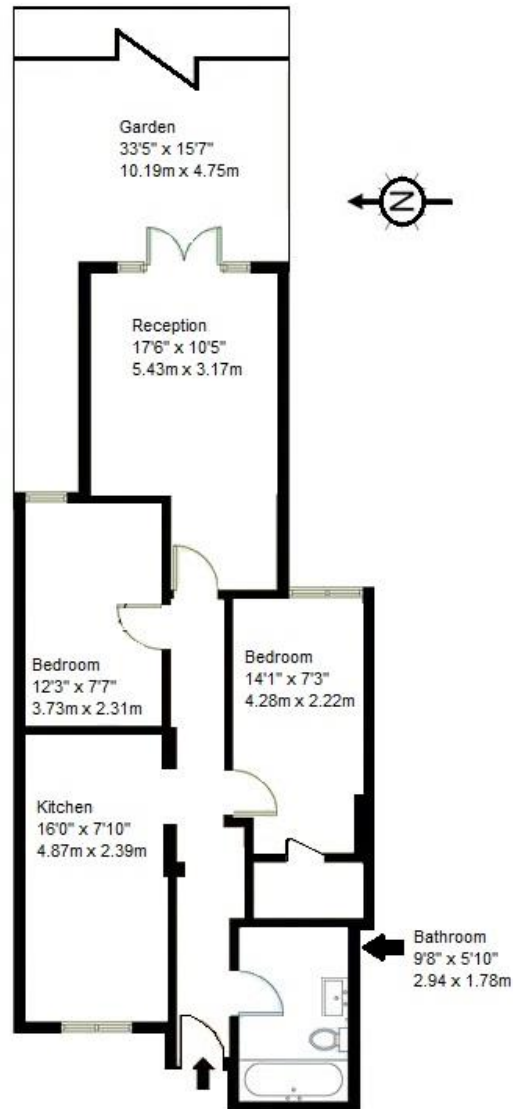
Tenure: Leasehold+Share of Freehold
Service Charge: 33.33 % on adhoc basis

Council Tax: Band D (£1943 per annum)

All viewings strictly via prior appointment.








Ground Floor Hendon Way, London NW2 2NR

Approx. Size: 672 Sq Ft (62.5 Sq M)

| Energy Efficiency Rating | | |
|---|---------|---|
| | Current | Potential |
| Very energy efficient - lower running costs | | |
| (92-100) A | | |
| (81-91) B | | |
| (69-80) C | 77 | 78 |
| (55-68) D | | |
| (39-54) E | | |
| (21-38) F | | |
| (1-20) G | | |
| Not energy efficient - higher running costs | | |
| England, Scotland & Wales | | EU Directive 2002/91/EC  |

MAPESBURY

Mapesbury House
84 Walm Lane
Willesden
London
NW2 4QY

020 8451 8999
contact@mapesbury.co.uk

mapesburyproperty.co.uk