

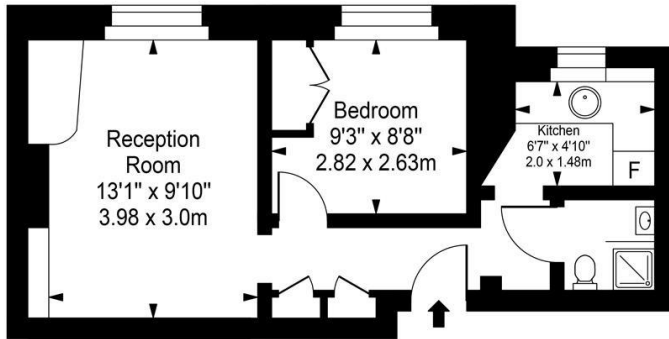
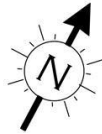
ML
ESTATES

1 Bedroom Flat
Belsize Road
London NW6

- One Double Bedroom
- Part Furnished
- First floor apartment
- Close to Transport Links

Price: £425 pw / £1,841.67 pcm inc
Heating and Hot Water

Belsize Road



First Floor

Approx Gross Internal Area 340 Sq Ft - 31.62 Sq M

For Illustration Purposes Only - Not To Scale



Environmental Impact (CO ₂) Rating		
	Current	Potential
Very environmentally friendly - lower CO ₂ emissions		
(92-100) A		
(81-91) B		
(69-80) C	70	71
(55-68) D		
(39-54) E		
(21-38) F		
(1-20) G		
Not environmentally friendly - higher CO ₂ emissions		
England, Scotland & Wales		EU Directive 2002/91/EC
Energy Efficiency Rating		
	Current	Potential
Very energy efficient - lower running costs		
(92-100) A		
(81-91) B		
(69-80) C	75	76
(55-68) D		
(39-54) E		
(21-38) F		
(1-20) G		
Not energy efficient - higher running costs		
England, Scotland & Wales		EU Directive 2002/91/EC

Fabulous one double bedroom first floor apartment (340 sq ft.) located on Belsize Road and close to Swiss Cottage. The property comprises master bedroom with built-in wardrobes, spacious reception room, modern fitted kitchen and shower room, new carpets and with secondary glazing throughout. Close to both Swiss Cottage Underground (Jubilee line) and South Hampstead (Overground), buses include routes 31, N28, N31, 139, 189. Available NOW. £15pw is payable on top of the rent for C/Heating and H/Water.

ML Estates wish to advise prospective purchasers that we have not checked the services or appliances. These particulars have been prepared as a guide only, any floor-plan or map is for illustrative purposes only. ML Estates, for themselves and for the vendors or lessors of this property whose agents they are given notice that: the particulars have been produced in good faith; do not constitute any part of a contract; no person in the employment of ML Estates has any authority to make or give any representation of warranty in relation to this property.