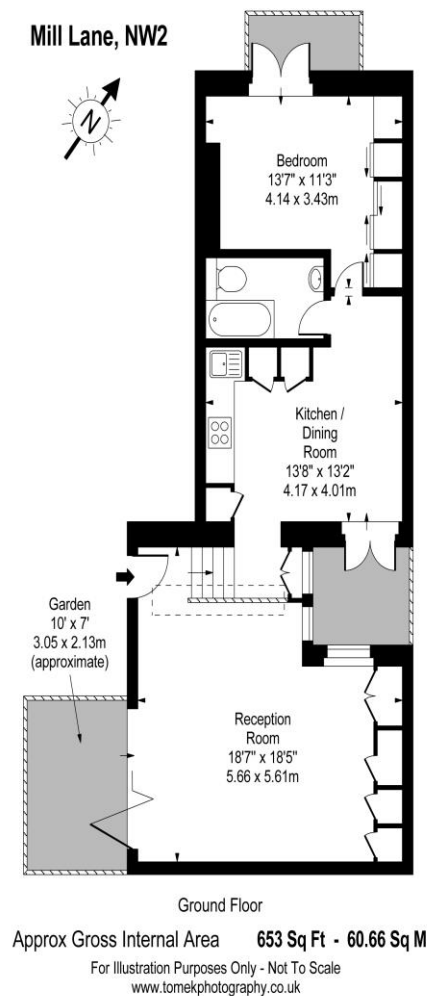


1 Bedroom Flat
Mill Lane
London NW6

- Superb One Bedroom Flat
- Part furnished
- Two small terraces
- High Specification Interiors

Price: £500 pw / £2,166.67 pcm



Environmental Impact (CO ₂) Rating		
	Current	Potential
Very environmentally friendly - lower CO ₂ emissions		
(92-100) A		
(81-91) B		
(69-80) C	79	80
(55-68) D		
(39-54) E		
(21-38) F		
(1-20) G		
Not environmentally friendly - higher CO ₂ emissions		
England, Scotland & Wales		EU Directive 2002/91/EC
Energy Efficiency Rating		
	Current	Potential
Very energy efficient - lower running costs		
(92-100) A		
(81-91) B		
(69-80) C	76	77
(55-68) D		
(39-54) E		
(21-38) F		
(1-20) G		
Not energy efficient - higher running costs		
England, Scotland & Wales		EU Directive 2002/91/EC

We are delighted to present this spacious and stylish one-bedroom maisonette apartment, offering an impressive 653 sq ft of beautifully designed living space. Set behind a secure gated entrance on Mill Lane with a video entry system, this split-level home combines contemporary finishes with exceptional comfort. The property boasts a high-specification interior throughout, featuring a generous open-plan living area ideal for both relaxing and entertaining. The flat further benefits from two private patios and an additional terrace, providing superb outdoor space rarely found in a one-bedroom home. Offered part furnished. Perfectly positioned, Mill Lane is just a short walk from the vibrant array of shops, bars, restaurants, and excellent transport links of West End Lane. Available from 6th January. Early viewing is highly recommended, call now to arrange a booking.

ML Estates wish to advise prospective purchasers that we have not checked the services or appliances. These particulars have been prepared as a guide only, any floor-plan or map is for illustrative purposes only. ML Estates, for themselves and for the vendors or lessors of this property whose agents they are given notice that: the particulars have been produced in good faith; do not constitute any part of a contract; no person in the employment of ML Estates has any authority to make or give any representation of warranty in relation to this property.