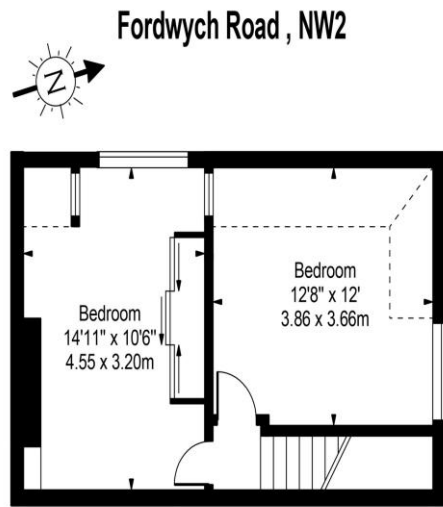


ML
ESTATES

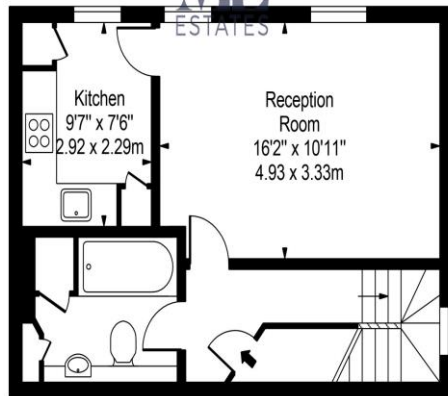
2 Bedroom Flat
Fordwych Road
London NW2

- Two Double Bedrooms
- Period Conversion
- Superb Condition
- Wood Floors

Price: £485 pw / £2,101.67 pcm



Third Floor



Second Floor

Approx Gross Internal Area **762 Sq Ft - 70.79 Sq M**

For Illustration Purposes Only - Not To Scale
www.tomekphotography.co.uk



Contemporary two double bedroom duplex apartment (approx 762 sq ft.) set on the upper floors of this Victorian conversion located on the cusp of West Hampstead. Comprising a naturally bright reception room with high ceilings, fully fitted kitchen with appliances including dishwasher, family bathroom and two generous double bedroom on the upper floor. Part furnished. Available End of Feb 2026

Environmental Impact (CO ₂) Rating		
	Current	Potential
Very environmentally friendly - lower CO ₂ emissions		
(92-100) A		
(81-91) B		
(69-80) C		
(55-68) D	66	69
(39-54) E		
(21-38) F		
(1-20) G		
Not environmentally friendly - higher CO ₂ emissions		
England, Scotland & Wales		EU Directive 2002/91/EC
Energy Efficiency Rating		
	Current	Potential
Very energy efficient - lower running costs		
(92-100) A		
(81-91) B		
(69-80) C	70	74
(55-68) D		
(39-54) E		
(21-38) F		
(1-20) G		
Not energy efficient - higher running costs		
England, Scotland & Wales		EU Directive 2002/91/EC

ML Estates wish to advise prospective purchasers that we have not checked the services or appliances. These particulars have been prepared as a guide only, any floor-plan or map is for illustrative purposes only. ML Estates, for themselves and for the vendors or lessors of this property whose agents they are given notice that: the particulars have been produced in good faith; do not constitute any part of a contract; no person in the employment of ML Estates has any authority to make or give any representation of warranty in relation to this property.