



1  
Bedroom Maisonette  
Broomsleigh Street  
London NW6

- Recently refurbished
- Own entrance
- New carpets
- New three seater sofa

Price: £440.77 pw / £1,910 pcm



Broomsleigh Street, NW6  
 Approximate Gross Internal Area  
 438 sq ft / 40.69 sq m

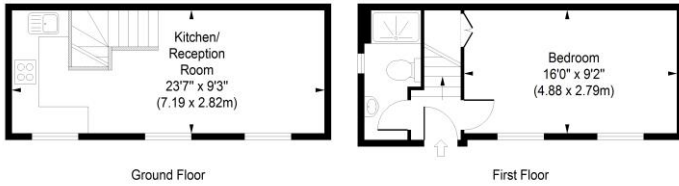


ILLUSTRATION FOR IDENTIFICATION PURPOSES ONLY

ALL MEASUREMENTS ARE MAXIMUM, AND INCLUDE WINDOW BAYS AND WARDROBES WHERE APPLICABLE  
 THIS PLAN MUST NOT BE REPRODUCED BY ANY OTHER PERSON WITHOUT PERMISSION



Environmental Impact (CO <sub>2</sub> ) Rating		
	Current	Potential
<i>Very environmentally friendly - lower CO<sub>2</sub> emissions</i>		
(92-100) <b>A</b>		
(81-91) <b>B</b>		
(69-80) <b>C</b>		
(55-68) <b>D</b>		<b>73</b>
(39-54) <b>E</b>	<b>56</b>	
(21-38) <b>F</b>		
(1-20) <b>G</b>		
<i>Not environmentally friendly - higher CO<sub>2</sub> emissions</i>		
<b>England, Scotland &amp; Wales</b>	EU Directive 2002/91/EC	

Energy Efficiency Rating		
	Current	Potential
<i>Very energy efficient - lower running costs</i>		
(92-100) <b>A</b>		
(81-91) <b>B</b>		<b>91</b>
(69-80) <b>C</b>		
(55-68) <b>D</b>		
(39-54) <b>E</b>	<b>61</b>	
(21-38) <b>F</b>		
(1-20) <b>G</b>		
<i>Not energy efficient - higher running costs</i>		
<b>England, Scotland &amp; Wales</b>	EU Directive 2002/91/EC	

Own entrance. Recently refurbished and cosy one double bedroom two storey maisonette (438 sq ft.) located in the heart of West Hampstead. Comprising reception room with open plan fitted kitchen with appliances, luxury shower room, double bedroom with fitted wardrobes, new carpets throughout. Part furnished. Mill Lane is adjacent to this property with its independent shops and restaurants. No Pets. Avail 2/3rd April.

ML Estates wish to advise prospective purchasers that we have not checked the services or appliances. These particulars have been prepared as a guide only, any floor-plan or map is for illustrative purposes only. ML Estates, for themselves and for the vendors or lessors of this property whose agents they are given notice that: the particulars have been produced in good faith; do not constitute any part of a contract; no person in the employment of ML Estates has any authority to make or give any representation of warranty in relation to this property.