

For Sale

Worcester Mews, Lymington Road, West Hampstead, NW6

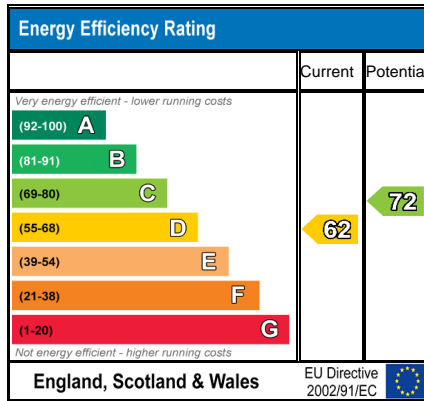
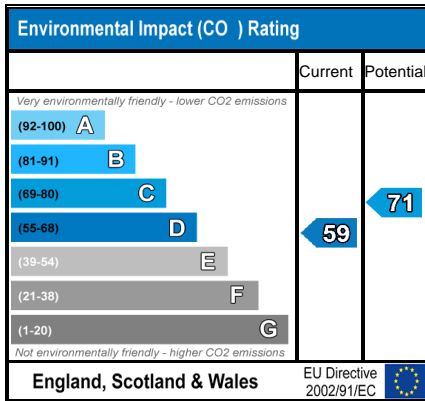
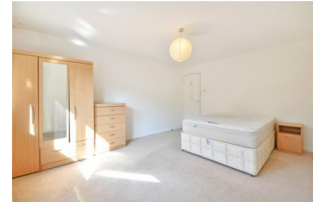
A four-bedroom ground and first floor MAISONETTE with PRIVATE REAR GARDEN set within this modern low-rise development located within yards of West End Lane. This spacious family home features a large open plan reception room, a modern fully equipped kitchen with dining area. There is a modern family bathroom, guest cloakroom/ utility room and a private entrance directly into the property.



- Large family maisonette
- Moments from tube & train
- Fitted wardrobes
- Chain free
- West facing garden
- Guest wc
- Communal heating & hot water
- Motivated sellers

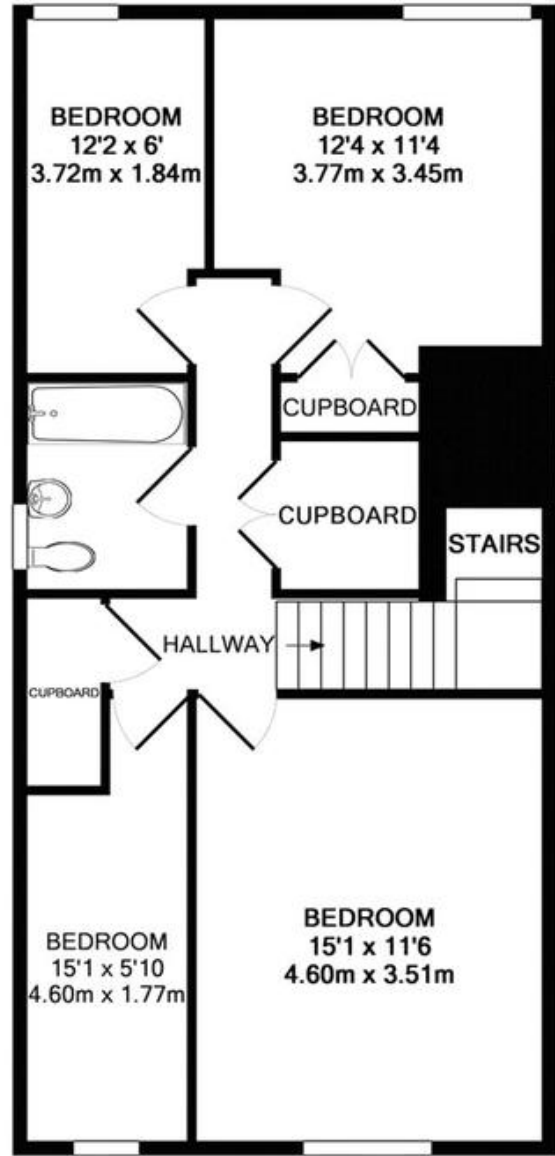
Asking price of £675,000 leasehold

Worcester Mews, Lymington Road, West Hampstead, NW6





GROUND FLOOR



1ST FLOOR



TOTAL APPROX. FLOOR AREA 1113 SQ.FT. (103.4 SQ.M.)

Whilst every attempt has been made to ensure the accuracy of the floor plan contained here, measurements of doors, windows, rooms and any other items are approximate and no responsibility is taken for any error, omission, or mis-statement. This plan is for illustrative purposes only and should be used as such by any prospective purchaser. The services, systems and appliances shown have not been tested and no guarantee as to their operability or efficiency can be given

Made with Metropix ©2018

VIEWING BY APPOINTMENT WITH AGENTS ML ESTATES

367 West End Lane, West Hampstead, London, NW6 1LP T: 020 7328 4444 E: info@m-l.co.uk W: www.m-l.co.uk

General: While we endeavour to make our sales particulars fair, accurate and reliable, they are only a general guide to the property and, accordingly, if there is any point which is of particular importance to you, please contact the office and we will be pleased to check the position for you, especially if you are contemplating travelling some distance to view the property.

Measurements: These approximate room sizes are only intended as general guidance. You must verify the dimensions carefully before ordering carpets or any built-in furniture.

Services: Please note we have not tested the services or any of the equipment or appliances in this property, accordingly we strongly advise prospective buyers to commission their own survey or service reports before finalizing their offer to purchase.

THESE PARTICULARS ARE ISSUED IN GOOD FAITH BUT DO NOT CONSTITUTE REPRESENTATIONS OF FACT OR FORM PART OF ANY OFFER OR CONTRACT. THE MATTERS REFERRED TO IN THESE PARTICULARS SHOULD BE INDEPENDENTLY VERIFIED BY PROSPECTIVE BUYERS OR TENANTS. NEITHER ML ESTATES NOR ANY OF ITS EMPLOYEES OR AGENTS HAS ANY AUTHORITY TO MAKE OR GIVE ANY REPRESENTATION OR WARRANTY WHATSOEVER IN RELATION TO THIS PROPERTY.

YOUR HOME IS AT RISK IF YOU DO NOT KEEP UP REPAYMENTS ON A MORTGAGE OR OTHER LOAN SECURED ON IT.

Written quotation available on request. All loans secured on property. Life assurance is usually required.