



Iverson Road | West Hampstead
London | NW6

**BRAND NEW two double bedroom two bathroom top floor duplex apartment (668 sq ft.)
located in West Hampstead.**

Two double bedrooms | Duplex apartment | Victorian Conversion | Close to amenities | Two bathrooms | Bright reception room

£475 per week

BRAND NEW two double bedroom two bathroom top floor duplex apartment (668 sq ft.) located in West Hampstead. Comprising a bright reception room with a fully fitted open plan kitchen with all appliances, two double bedrooms, luxury bathroom with shower and ensuite facilities to master bedroom, part furnished. Iverson Road is located moments from all the restaurants, bars, shopping facilities and the Jubilee line, Thameslink and London Overground stations. Available 1st Sept.





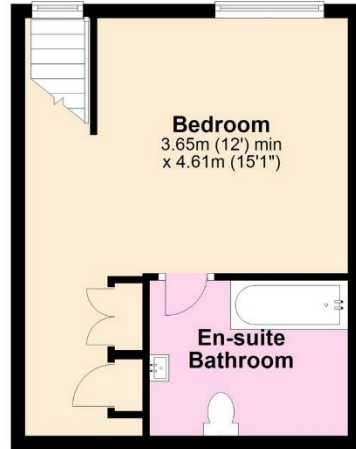
First Floor

Approx. 34.6 sq. metres (372.4 sq. feet)



Top Floor

Approx. 27.4 sq. metres (295.2 sq. feet)



Total area: approx. 62.0 sq. metres (667.6 sq. feet)

The measurements given are approximate and are for illustration only. They should not be relied on for valuation. Plan produced using PlanUp.

ML Estates

367 West End Lane, West Hampstead, London, NW6
020 7328 4444 | info@m-l.co.uk | www.m-l.co.uk

Important Notice - These particulars have been prepared in good faith and they are not intended to constitute part of an offer or contract. We have not performed a structural survey on this property and the services, appliances and specific fittings have not been tested. All photographs, measurements, floor plans and distances referred to are given as a guide and should not be relied upon.

