

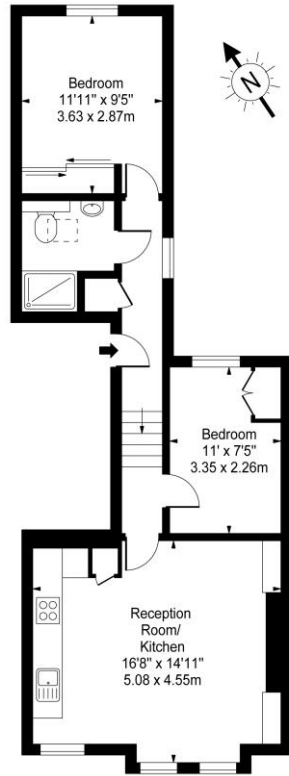


2 Bedroom Flat
Streatley Road
London NW6

- Brand new
- Two double bedrooms
- Luxury family bathroom
- Part Furnished

Price: £507.69 pw / £2,200 pcm

Streatley Road, NW6



First Floor

Approx Gross Internal Area **563 Sq Ft - 52.30 Sq M**

For Illustration Purposes Only - Not To Scale
www.tomekphotography.co.uk



Energy Efficiency Rating		
	Current	Potential
Very energy efficient - lower running costs		
(92-100) A		
(81-91) B		
(69-80) C	78	78
(55-68) D		
(39-54) E		
(21-38) F		
(1-20) G		
Not energy efficient - higher running costs		
England, Scotland & Wales		EU Directive 2002/91/EC

Brand new two double bedroom first floor split level apartment (563 sq ft.) finished to an exacting standard. Comprising fully fitted kitchen, generous reception room & family bathroom. Further benefits include underfloor heating, video entryphone, granite worktops and oak floors. The closest transport links are Brondesbury Overground station and Kilburn tube (Jubilee Line Zone 2) which are both close by. Offered part furnished /unfurnished. Available Now. **VIEWINGS HIGHLY RECOMMENDED!**

ML Estates wish to advise prospective purchasers that we have not checked the services or appliances. These particulars have been prepared as a guide only, any floor-plan or map is for illustrative purposes only. ML Estates, for themselves and for the vendors or lessors of this property whose agents they are given notice that: the particulars have been produced in good faith; do not constitute any part of a contract; no person in the employment of ML Estates has any authority to make or give any representation of warranty in relation to this property.