

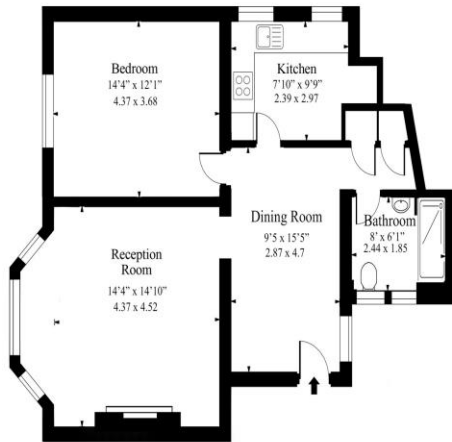
1 Bed Mansion Flat  
West Hampstead  
NW6

- Elegant mansion flat
- Communal Gardens
- Lift access
- High ceilings

Asking price of £700,000  
LH+ShareFH

# Buckingham Mansions

West End Lane NW6



second floor

Approx Gross Internal Area 715 sq ft - 66.40 sq m

Measured in accordance with RICS guidelines. Every attempt is made to ensure accuracy  
However all measurements are approximate.

The floor plan is illustrative purposes only and is not to scale

[www.tomekphotography.co.uk](http://www.tomekphotography.co.uk)



Beautiful New Instruction in the heart of West Hampstead, We have an amazing One double bedroom apartment located on the 2nd floor in Buckingham Mansions on West End Lane, Spacious and naturally bright, this lateral apartment offers over 700 sqft of space with high ceilings and large rooms and period features. The BAM Estate offers communal cleaning of all blocks on a daily basis, repairs, communal gardens and residents summer parties! Buckingham Mansions is well situated providing access to local amenities and transport links (Jubilee,Thameslink & Overground).

ML Estates wish to advise prospective purchasers that we have not checked the services or appliances. These particulars have been prepared as a guide only, any floor-plan or map is for illustrative purposes only. ML Estates, for themselves and for the vendors or lessors of this property whose agents they are given notice that: the particulars have been produced in good faith; do not constitute any part of a contract; no person in the employment of ML Estates has any authority to make or give any representation of warranty in relation to this property.