



BOURNEHAY ROAD  
PARLIAMENT  
HILL

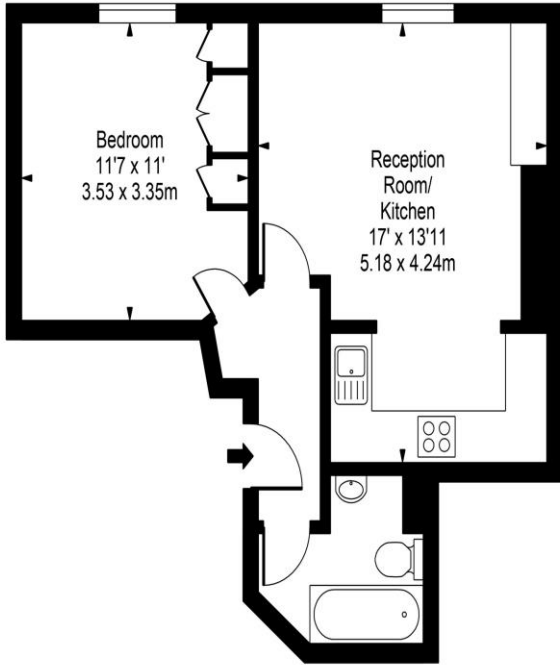
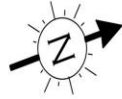
1 Bedroom Flat  
Parliament Hill  
London NW3

- Period Conversion
- Wood Floors
- One Double Bedroom
- Excellent Condition

Asking price of £450,000  
Leasehold



# Parliament Hill, NW3



Second Floor

Approx Gross Internal Area **428 Sq Ft - 39.76 Sq M**

For Illustration Purposes Only - Not To Scale  
[www.tomekphotography.co.uk](http://www.tomekphotography.co.uk)



This stylish ONE DOUBLE BEDROOM second floor apartment offers ample living space and a sought-after location moments from Primrose Hill on the Hampstead Heath extension, in a scenic residential area. Comprising a bright and spacious reception room with open-plan fitted kitchen, generous bedroom, fully tiled bathroom with wc with views over the rear garden. Parliament Hill is a popular area close to the shops, bars and restaurants of Pond Street, Belsize Park and Hampstead High Street & Belsize Park tube (Northern Line) is close by.

Environmental Impact (CO <sub>2</sub> ) Rating		
	Current	Potential
Very environmentally friendly - lower CO <sub>2</sub> emissions		
(92-100) <b>A</b>		
(81-91) <b>B</b>		<b>83</b>
(69-80) <b>C</b>		
(55-68) <b>D</b>	<b>68</b>	
(39-54) <b>E</b>		
(21-38) <b>F</b>		
(1-20) <b>G</b>		
Not environmentally friendly - higher CO <sub>2</sub> emissions		
England, Scotland & Wales		EU Directive 2002/91/EC
Energy Efficiency Rating		
	Current	Potential
Very energy efficient - lower running costs		
(92-100) <b>A</b>		
(81-91) <b>B</b>		<b>79</b>
(69-80) <b>C</b>		
(55-68) <b>D</b>	<b>68</b>	
(39-54) <b>E</b>		
(21-38) <b>F</b>		
(1-20) <b>G</b>		
Not energy efficient - higher running costs		
England, Scotland & Wales		EU Directive 2002/91/EC

ML Estates wish to advise prospective purchasers that we have not checked the services or appliances. These particulars have been prepared as a guide only, any floor-plan or map is for illustrative purposes only. ML Estates, for themselves and for the vendors or lessors of this property whose agents they are given notice that: the particulars have been produced in good faith; do not constitute any part of a contract; no person in the employment of ML Estates has any authority to make or give any representation of warranty in relation to this property.