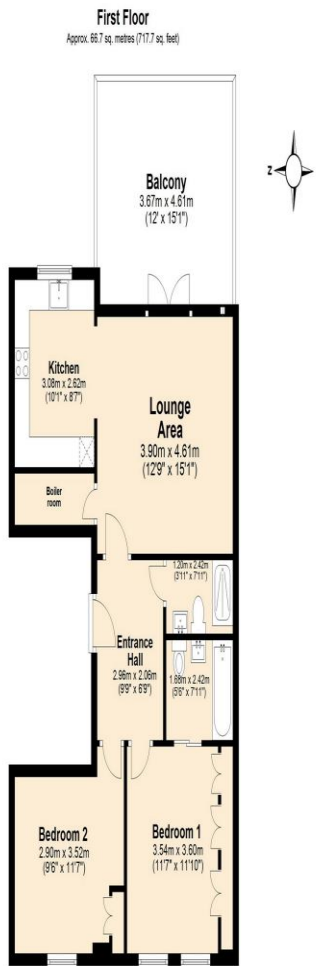




2 Bed Conversion  
Priory Road  
London NW6

- First floor
- Private roof terrace
- Chain free
- En-suite

Asking price of £975,000  
LH+ShareFH



Copyright MGT Energy-mira.thompson@connet.com. Whilst every attempt has been made to ensure the accuracy of the floor plan contained here measurements are approximate and no responsibility is taken for any errors. This plan is for illustrative purposes and should only be used as such by any prospective purchasers.  
Plan produced using Planip.



Energy Efficiency Rating		
	Current	Potential
<i>Very energy efficient - lower running costs</i>		
(92-100) <b>A</b>		
(81-91) <b>B</b>		
(69-80) <b>C</b>	<b>78</b>	<b>78</b>
(55-68) <b>D</b>		
(39-54) <b>E</b>		
(21-38) <b>F</b>		
(1-20) <b>G</b>		
<i>Not energy efficient - higher running costs</i>		
<b>England, Scotland &amp; Wales</b>	EU Directive 2002/91/EC	

ML Estates wish to advise prospective purchasers that we have not checked the services or appliances. These particulars have been prepared as a guide only, any floor-plan or map is for illustrative purposes only. ML Estates, for themselves and for the vendors or lessors of this property whose agents they are given notice that: the particulars have been produced in good faith; do not constitute any part of a contract; no person in the employment of ML Estates has any authority to make or give any representation of warranty in relation to this property.