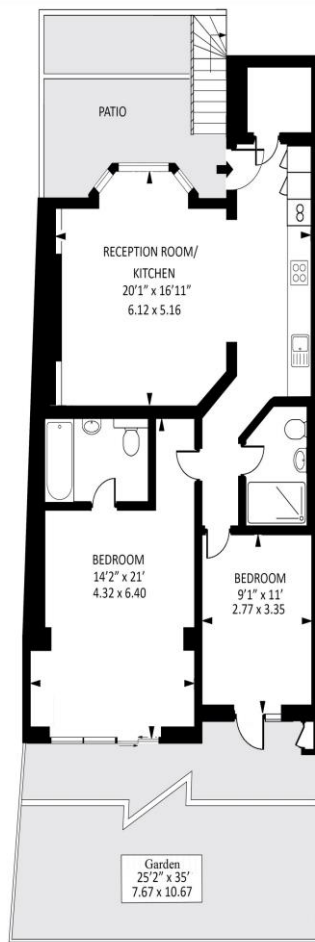


2 Bed Garden Flat
Hemstal Road
London NW6

- Immaculate Home
- Private Rear Garden
- Large Open Plan Reception
- Utility Room

Asking price of £849,950
Leasehold

Hemstal Road, NW6



Lower Ground Floor

Approx gross internal area : 838 sq ft - 77.9 sq m

Measured in accordance with RICS guidelines. Every attempt is made to ensure accuracy
However all measurements are approximate.
The floor plan is illustrative purposes only and is not to scale
www.tomekphotography.co.uk



Set on a picturesque tree-lined residential turning, this beautifully refurbished garden flat offers stylish and contemporary living in the heart of West Hampstead. Boasting two generous double bedrooms and two sleek modern bathrooms, the property is finished to a high standard throughout. Step into a spacious open-plan living area featuring a fully integrated contemporary kitchen, perfect for both everyday living and entertaining. Hardwood floors flow seamlessly throughout, adding warmth and sophistication.

ML Estates wish to advise prospective purchasers that we have not checked the services or appliances. These particulars have been prepared as a guide only, any floor-plan or map is for illustrative purposes only. ML Estates, for themselves and for the vendors or lessors of this property whose agents they are given notice that: the particulars have been produced in good faith; do not constitute any part of a contract; no person in the employment of ML Estates has any authority to make or give any representation of warranty in relation to this property.