

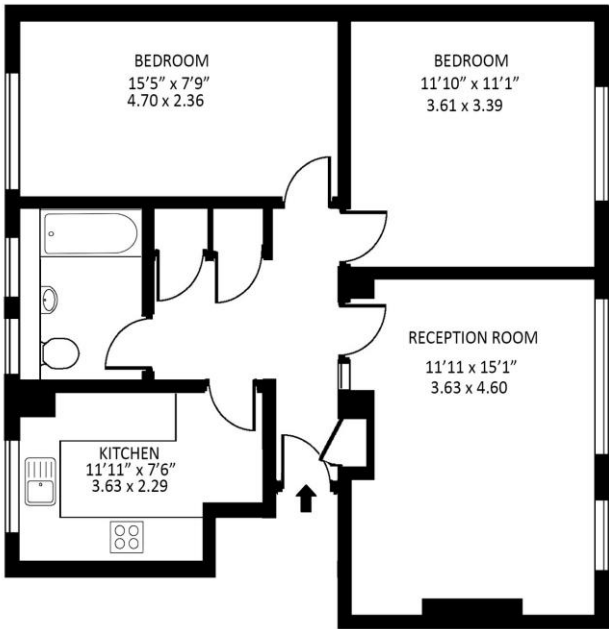


2 Bedroom Apartment  
Great North Road  
London N2

- Two Double Bedrooms
- Off Street Parking
- Purpose Built Block
- Newly repainted

Price: £425,000  
LH+ShareFH

# Mansfield Heights Great North Road, East Finchley N2



SECOND FLOOR

Approx gross internal area : 642.6 sq ft - 59.7 sq m



Measured in accordance with RICS guidelines. Every attempt is made to ensure accuracy  
However all measurements are approximate.  
The floor plan is illustrative purposes only and is not to scale  
www.tomekphotography.co.uk



Energy Efficiency Rating		
	Current	Potential
Very energy efficient - lower running costs		
(92-100) <b>A</b>		
(81-91) <b>B</b>		
(69-80) <b>C</b>	<b>77</b>	<b>77</b>
(55-68) <b>D</b>		
(39-54) <b>E</b>		
(21-38) <b>F</b>		
(1-20) <b>G</b>		
Not energy efficient - higher running costs		
England, Scotland & Wales		EU Directive 2002/91/EC

Stylish Two-Bedroom Apartment in a prime East Finchley location. Situated on the second floor of a well-maintained purpose-built development, this newly redecorated two double bedroom apartment offers bright and spacious living in the heart of East Finchley. Just a short walk (under 10 minutes) to the Northern Line station, it's perfectly positioned for easy commuting and access to local amenities. The property features a generously sized reception room filled with natural light, a separate fully fitted kitchen, and two well-proportioned double bedrooms-each with built-in storage. Additional benefits include new double-glazed windows throughout, well-kept communal gardens to the rear, and a recently upgraded building entrance with secure intercom access. This flat is ideal for first-time buyers or investors alike. The property can be sold with a tenant in situ, making it an attractive buy-to-let opportunity. For more information on rental yield, Call the office to discuss and to make a viewing.

ML Estates wish to advise prospective purchasers that we have not checked the services or appliances. These particulars have been prepared as a guide only, any floor-plan or map is for illustrative purposes only. ML Estates, for themselves and for the vendors or lessors of this property whose agents they are given notice that: the particulars have been produced in good faith; do not constitute any part of a contract; no person in the employment of ML Estates has any authority to make or give any representation of warranty in relation to this property.