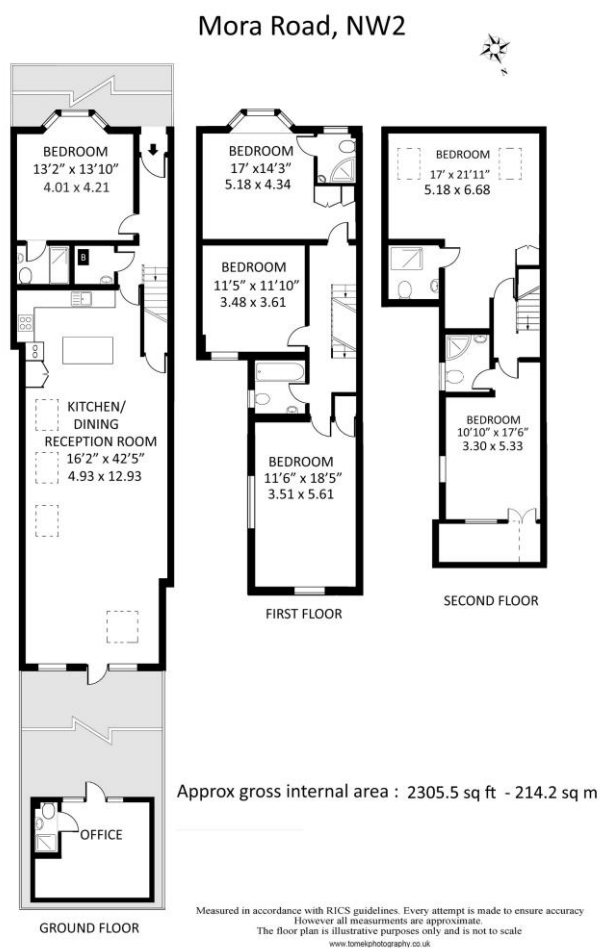




6 Bedroom Terraced
Mora Rd
London NW2

- Newly Refurbished
- Loft Conversion
- 6 BEDROOMS
- Summerhouse / Office

Asking price of £1,500,000
Freehold



Energy Efficiency Rating		
	Current	Potential
Very energy efficient - lower running costs		
(92-100) A		
(81-91) B		84
(69-80) C		
(55-68) D	67	
(39-54) E		
(21-38) F		
(1-20) G		
Not energy efficient - higher running costs		
England, Scotland & Wales		EU Directive 2002/91/EC

A Beautifully Refurbished Six-Bedroom Victorian Family Home in Cricklewood

We are delighted to offer this stunning six-bedroom Victorian mid-terrace house, newly refurbished and thoughtfully designed to create a luxurious and spacious family home. Measuring over 2,300 sq ft and arranged over three generous floors, this exceptional property blends timeless period charm with high-quality modern finishes. The ground floor welcomes you with an elegant entrance hall leading to a bright and spacious brand-new kitchen/dining room, perfectly positioned to overlook the south-facing rear garden-ideal for entertaining and family life. At the end of the garden sits a versatile studio space, ideal as a home office, gym, or summer house. A separate dining room and a well-proportioned double bedroom with its own stylish en-suite bathroom complete this level. On the first floor, you'll find three further double bedrooms, all finished to a high standard, along with a large, luxurious family bathroom featuring both a freestanding bathtub and separate shower enclosure. The top floor boasts a beautifully converted loft space, creating two additional double bedrooms, both with high-specification en-suite shower rooms-offering privacy and comfort for guests or older children. This fabulous home is offered with a freehold title and no onward chain, making it ready for immediate occupation. Moira Road is a peaceful residential street with excellent access to Cricklewood station, local bus routes, and the many amenities of Brent Cross and West Hampstead, including excellent schools, shops, and restaurants.

ML Estates wish to advise prospective purchasers that we have not checked the services or appliances. These particulars have been prepared as a guide only, any floor-plan or map is for illustrative purposes only. ML Estates, for themselves and for the vendors or lessors of this property whose agents they are given notice that: the particulars have been produced in good faith; do not constitute any part of a contract; no person in the employment of ML Estates has any authority to make or give any representation of warranty in relation to this property.