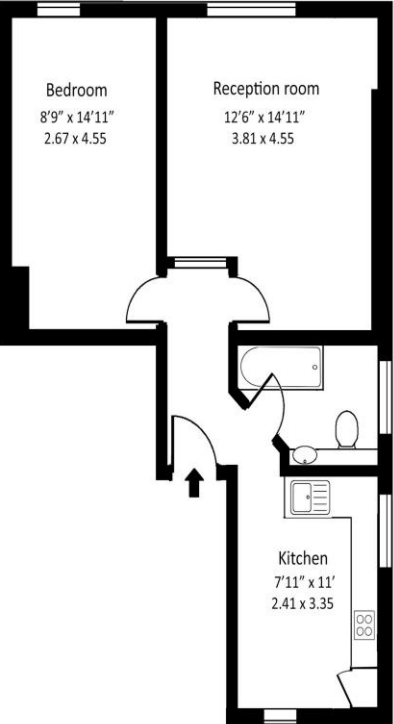


1 Bedroom Flat
Fitzjohn's Avenue
London NW3

- Victorian conversion
- High Ceilings
- Fully fitted open plan kitchen
- Modern bathroom

Price: £443.08 pw / £1,920 pcm

Fitzjohns Avenue, NW3



Second floor

Approx gross internal area : 474 sq ft - 44.04 sq m

Measured in accordance with RICS guidelines. Every attempt is made to ensure accuracy
However all measurements are approximate.
The floor plan is illustrative purposes only and is not to scale
www.tomelzphotography.co.uk



Energy Efficiency Rating		
	Current	Potential
Very energy efficient - lower running costs		
(92-100) A		
(81-91) B		
(69-80) C		79
(55-68) D		
(39-54) E		
(21-38) F	39	
(1-20) G		
Not energy efficient - higher running costs		
England, Scotland & Wales		EU Directive 2002/91/EC

Beautiful one double bedroom apartment set on the second floor of this imposing period building in a very sought after location with Hampstead, Belsize Park and Swiss Cottage all within easy reach. The apartment has elegant interiors throughout including high ceilings to the spacious reception room, beautiful communal gardens to the rear, fully fitted open plan kitchen with all appliances and a modern bathroom. The property is available part furnished. Available 4th Sept Communal gardens.

ML Estates wish to advise prospective purchasers that we have not checked the services or appliances. These particulars have been prepared as a guide only, any floor-plan or map is for illustrative purposes only. ML Estates, for themselves and for the vendors or lessors of this property whose agents they are given notice that: the particulars have been produced in good faith; do not constitute any part of a contract; no person in the employment of ML Estates has any authority to make or give any representation of warranty in relation to this property.