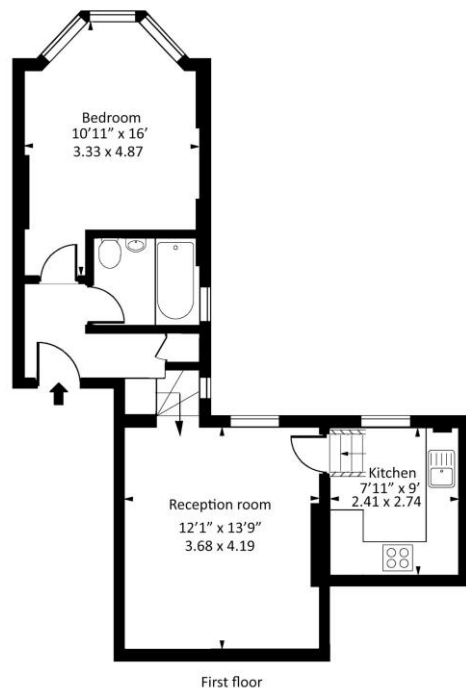


1 Bedroom Apartment
Springwell Avenue
London NW10

- One Double Bedroom
- Long Lease
- Period Conversion
- Chain Free

Auction guide price of £250,000
Leasehold

Springwell Avenue, NW10



Approx gross internal area : 485 sq ft - 45.1 sq m

Measured in accordance with RICS guidelines. Every attempt is made to ensure accuracy
However all measurements are approximate.
The floor plan is illustrative purposes only and is not to scale
www.tomekphotography.co.uk



Energy Efficiency Rating		
	Current	Potential
Very energy efficient - lower running costs		
(92-100) A		
(81-91) B		
(69-80) C		
(55-68) D	66	75
(39-54) E		
(21-38) F		
(1-20) G		
Not energy efficient - higher running costs		
England, Scotland & Wales		EU Directive 2002/91/EC

OPEN HOUSE by APPOINTMENT ONLY

Being sold via Secure Sale online bidding. Terms & Conditions apply. Starting Bid £250,000

This property will be legally prepared enabling any interested buyer to secure the property immediately once their bid/offer has been accepted. Ultimately a transparent process which provides speed, security and certainty for all parties.

We are delighted to present this fabulous one-bedroom apartment, set on the first floor of an attractive period conversion in the heart of Harlesden. Offered chain-free with a long lease, this charming home is rear-facing, split-level, and presented in excellent condition throughout. The property provides a stylish and practical layout, perfectly blending period character with modern living, making it an ideal first home or investment opportunity. Being sold in the modern method of auction with a starting guide price of £250,000, this is a fantastic chance to secure a well-appointed apartment in a highly sought-after location.

ML Estates wish to advise prospective purchasers that we have not checked the services or appliances. These particulars have been prepared as a guide only, any floor-plan or map is for illustrative purposes only. ML Estates, for themselves and for the vendors or lessors of this property whose agents they are given notice that: the particulars have been produced in good faith; do not constitute any part of a contract; no person in the employment of ML Estates has any authority to make or give any representation of warranty in relation to this property.