

Kings Cottages, Epping Green, CM16

£360,000 Freehold



- Delightful Cottage
- Village Location
- Double Glazing
- Rear Garden w/Access to Allotments
- Chain Free
- Two Bedrooms
- Gas Central Heating
- Off Street Parking
- Viewing Recommended

Montagues are pleased to offer to the market this delightful two bedroom terraced cottage in village location. The property enjoys a lounge, fitted kitchen with breakfast/dining area, downstairs bathroom, gas central heating and double glazing throughout. To the exterior is off street parking for one car and a rear garden with patio area, backing onto open countryside.

An early viewing of this charming cottage is strongly recommended.

Exterior



Kitchen

4.79m x 3.02m (15'9" x 9'11")



Lounge

3.07m x 3.02m (10'1" x 9'11")



Master Bedroom



Bathroom

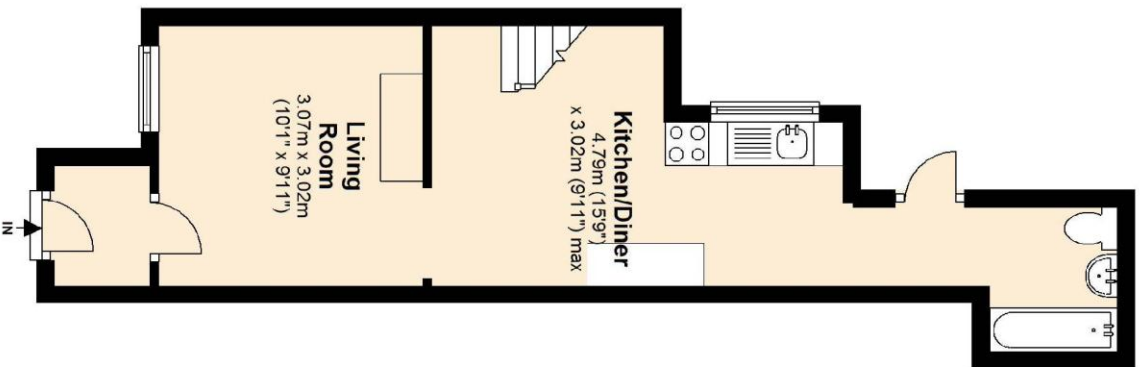


Garden



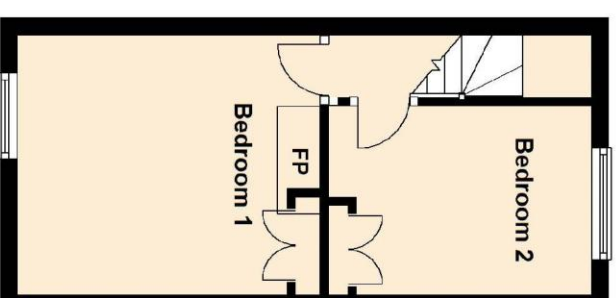
Ground Floor

Approx. 27.5 sq. metres (296.2 sq. feet)



First Floor

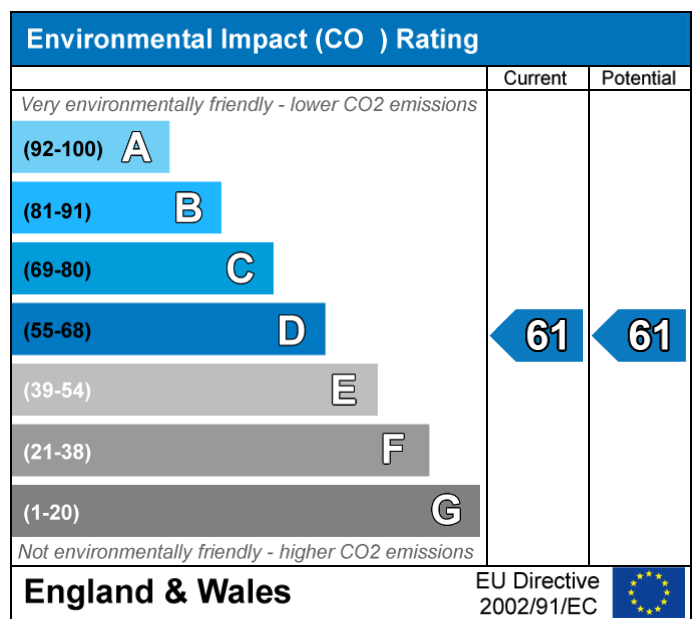
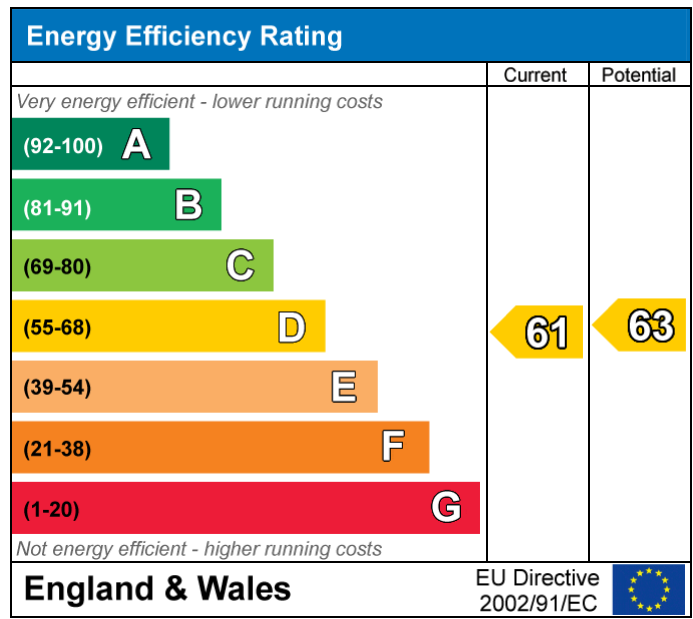
Approx. 20.2 sq. metres (217.4 sq. feet)



Total area: approx. 47.7 sq. metres (513.6 sq. feet)

For illustrative purposes only - Not to scale.

Plan produced using PlanUp.



Whilst every care is taken to ensure the accuracy of these details no responsibility for errors or misdescription can be accepted nor is any guarantee offered in respect of the property. These particulars do not constitute any part of an offer or contract.