

Tower Close, North Weald, CM16

£375,000 Freehold



- Two Bedroom End Of Terrace House
- Good Size Lounge
- Two Double Bedrooms
- Large Rear Garden
- Off Street Parking For Four Cars
- Cul-De-Sac Location
- Fitted Kitchen
- Conservatory
- Gas Central Heating & Double Glazing
- CHAIN FREE



Montagues are pleased to offer to the market this good size two bedroom house in a lovely cul-de-sac location. The property offers a good size lounge, fitted kitchen, two double bedrooms, upstairs bathroom and a conservatory to the rear. The property benefits from gas central heating and double glazing throughout, a large rear garden and off street parking for four cars.

Exterior



Kitchen

1.92m x 5.04m (6'4" x 16'6")



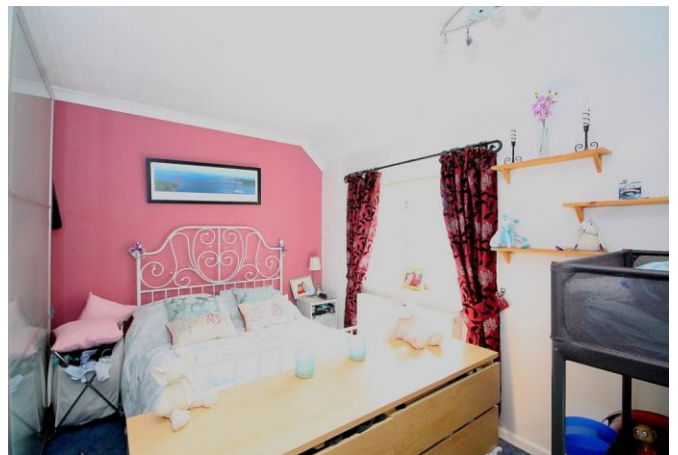
Lounge

4.51m x 3.93m (14'10" x 12'11")



Master Bedroom

3.20m x 5.04m (10'6" x 16'6")



Bedroom Two

3.24m x 2.58m (10'8" x 8'6")



Bathroom



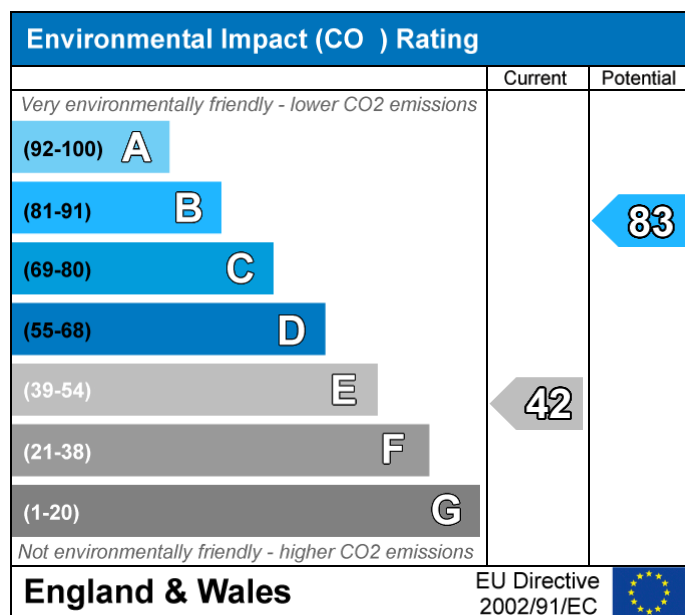
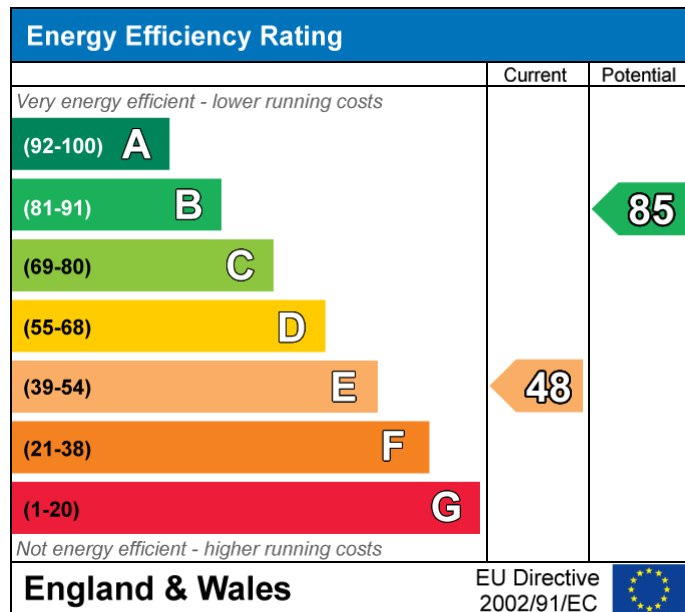
Conservatory

3.17m x 5.04m (10'5" x 16'6")



Garden





Whilst every care is taken to ensure the accuracy of these details no responsibility for errors or misdescription can be accepted nor is any guarantee offered in respect of the property. These particulars do not constitute any part of an offer or contract.