



Guide Price £300,000 - £330,000 Freehold

T: 01293 531721

Lyndhurst Close, Southgate, Crawley, RH11

 2  1  1  Y  Y  0.5 Miles



Moore & Partners

GUIDE PRICE £300,000 - £330,000. THIS TWO DOUBLE BEDROOM TERRACE HOME IS IDEAL AS A FIRST TIME BUY OR DOWNSIZE, THE PROPERTY IS LOCATED IN CLOSE PROXIMITY TO CRAWLEY TOWN CENTRE, MAINLINE TRAIN STATION AND BUS STATION. *VENDOR SUITED

This charming property has light and elegantly presented accommodation and is well-proportioned throughout, with salient points including a stylish kitchen, contemporary bathroom suite, two double bedrooms, and gardens to the front and to the rear.

There is a generous reception room with gas fireplace and large feature bay window. The contemporary kitchen is fitted with a range of stylish wall and base units and integrated oven, with a dining area which is an ideal space for mealtimes or could be used as an office/play area. There is access to the rear garden from the kitchen. Arranged over the first floor are two double bedrooms, with built in storage to the main bedroom, both bedrooms can comfortably accommodate double beds as well as a range of other bedroom furniture. A stylishly appointed bathroom featuring a bath with shower over completes the accommodation.

The rear garden is mainly laid to lawn with a patio area just outside the kitchen/diner. The garden is secure with panel fencing with rear access provided via a single gate. The front garden has a paved path leading to the front door with an area of lawn and small flower bed.

A single garage can be found enbloc

This property is being marketed as vendor suited, making the buying process smoother and more straightforward. This home offers a comfortable living space in a desirable location.

A fantastic starter home for a couple or small family as well as downsizers.



Room Details

Ground Floor

Living Room 15'8" x 11'5" (4.78m x 3.48m)

Kitchen/Diner 15'9" x 7'5" (4.80m x 2.26m)

First Floor

Landing

Bedroom One 12'9" x 9'6" (3.89m x 2.90m)

Bedroom Two 12'10" x 9'2" (3.91m x 2.79m)

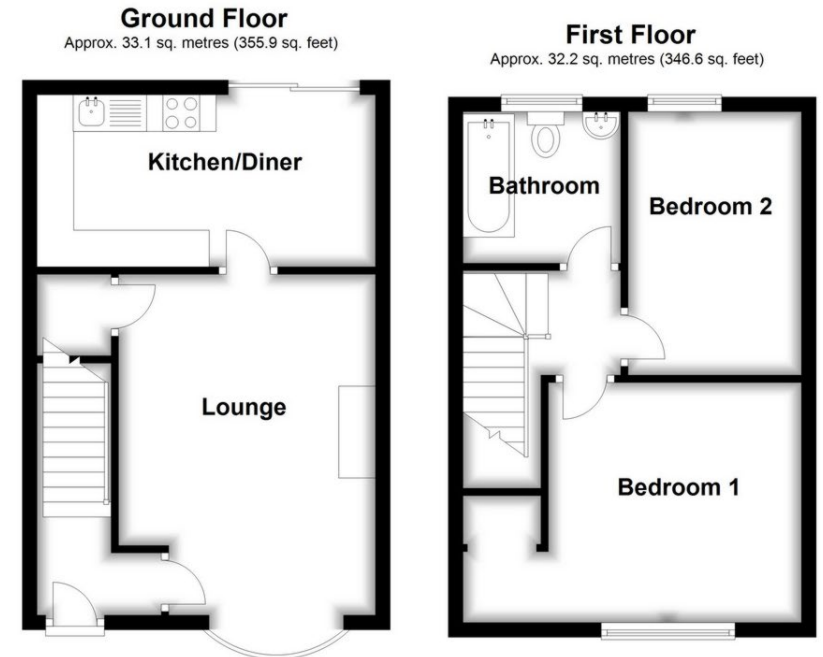
Bathroom 6'7" x 6'5" (2.01m x 1.96m)

Outside

Front Gardens

Rear Gardens

Single Garage



Total area: approx. 65.3 sq. metres (702.4 sq. feet)

These drawings are for representational purposes only. Drawn by Brian Blunden.
Plan produced using PlanUp.

Whilst every care is taken to ensure the accuracy of these details no responsibility for errors or misdescription can be accepted nor is any guarantee offered in respect of the property. These particulars do not constitute any part of an offer or contract.

