



**HARBOUR VIEW, ABBOTTS CLIFF,  
 FOLKESTONE**

**£900 per month**

**MOTIS ESTATES ARE PROUD TO  
 OFFER THIS UNIQUE 2 BEDROOM  
 BUNGALOW, WITH STUNNING SEA  
 VIEWS LOCATED IN THE QUIET  
 VILLAGE OF CAPEL-LE-FERNE.**



RESIDENTIAL SALES

RESIDENTIAL LETTINGS

COMMERCIAL

PROFESSIONAL SERVICES



[WWW.MOTIS-ESTATES.COM](http://WWW.MOTIS-ESTATES.COM)



Motis Estates Ltd & Motis CS Ltd t/a Motis Estates inc. H Wald & Co

Directors: Patrick Hutley, David McComb, Kris Foster MRICS Consultant: Kim Clinch FRICS

# Harbour View, Abbotts Cliff Folkestone CT18 7HZ

**ENTRANCE HALL , LIVING ROOM , KITCHEN , TWO BEDROOMS ,  
BATHROOM/W.C. , REPLACEMENT DOUBLE GLAZING**

## Description

Motis Estates are proud to offer this two bedroom bungalow in a tranquil location offers superb sea views from Folkestone harbour over the English Channel.

Folkestone town centre is approximately 15 minutes distance offering full range of amenities and Dover equidistant with its Ferry Port.

The accommodation comprises entrance hall, Living Room with woodburner and large patio doors out to the cliff top garden, Fitted Kitchen with some appliances, two double Bedrooms, Bathroom/w.c, electric heating and replacement double glazing, Parking for two vehicles.

The property benefits from direct seaviews, which can be seen from the cliff top gardens at the rear of the property.

Viewing is strictly by appointment only through Motis Estates. REGRETFULLY NO SMOKERS.

**Tenure** AST Let Only

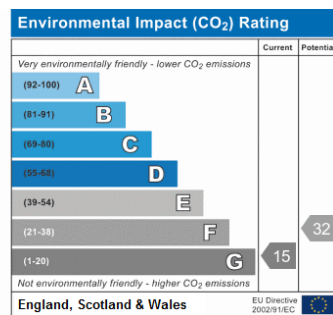
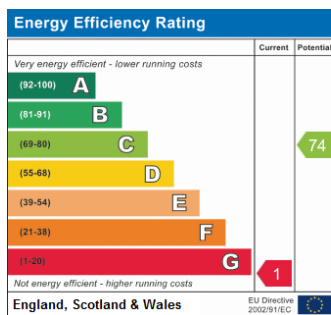
**Postcode** CT18 7HZ

**Viewings** Strictly by appointment only -  
Property Reference MOTIS\_002962

## Opening Hours:

Monday - Friday 9.00 - 5.30

Saturday 9.00 - 3.00

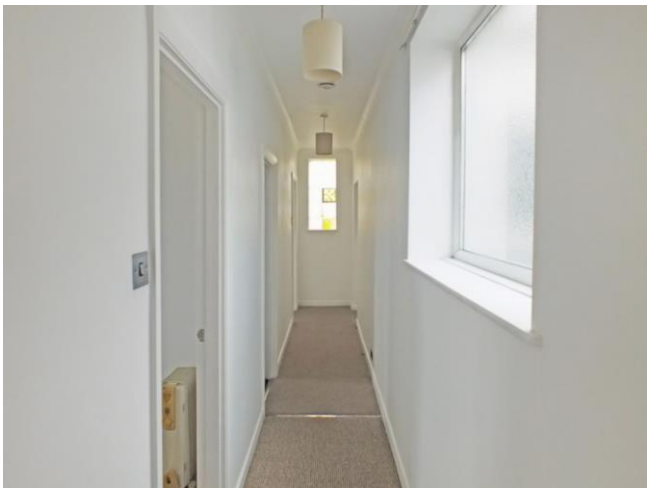


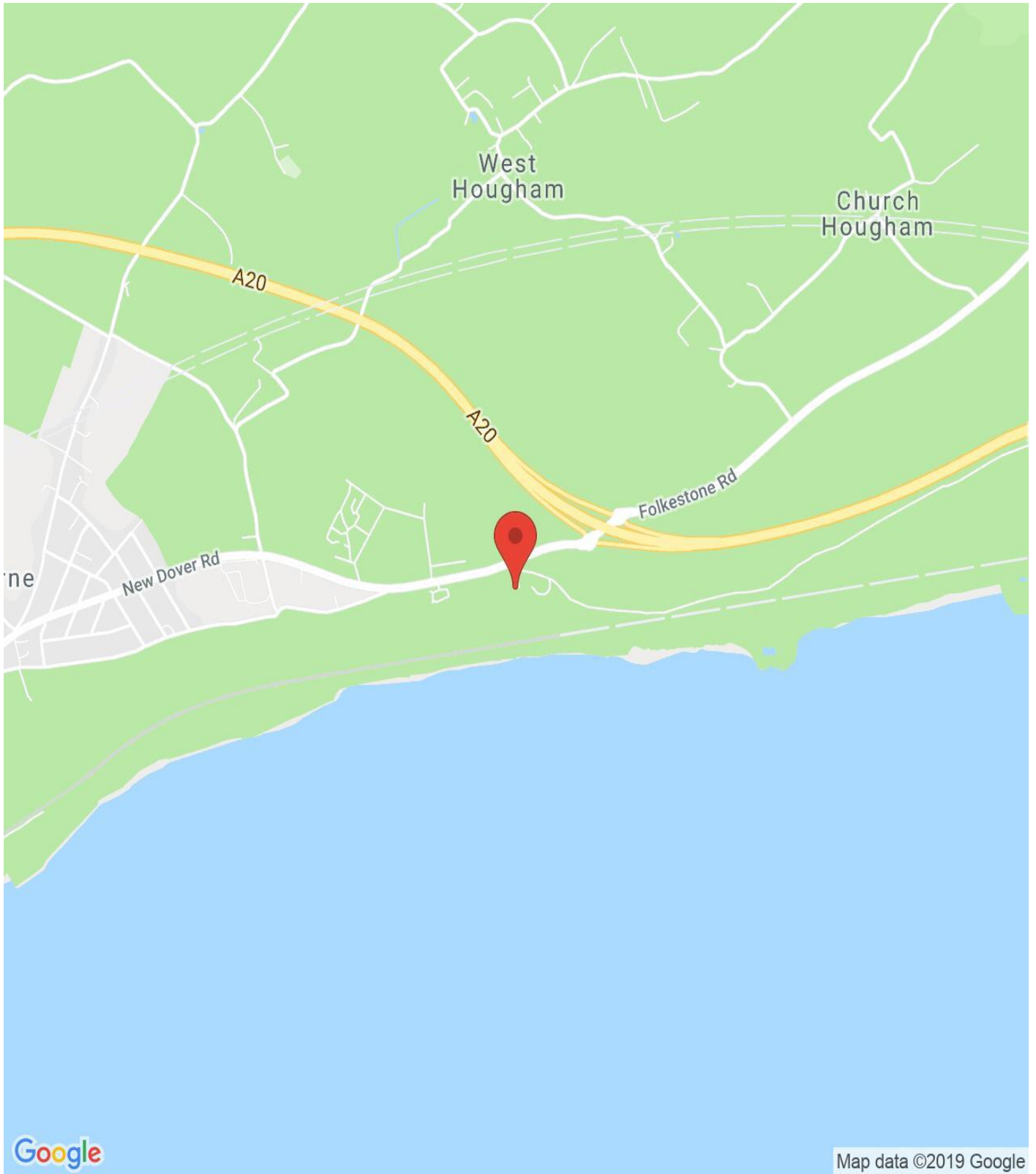












**IMPORTANT NOTICE**

Descriptions of the property are subjective and are used in good faith as an opinion and NOT as a statement of fact. Please make further specific enquires to ensure that our descriptions are likely to match any expectations you may have of the property. We have not tested any services, systems or appliances at this property. We strongly recommend that all the information we provide be verified by you on inspection, and by your Surveyor and Conveyancer.