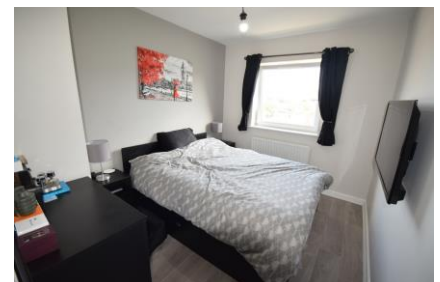


Asking price of £275,000 Parkhouse Court, Hatfield, AL10

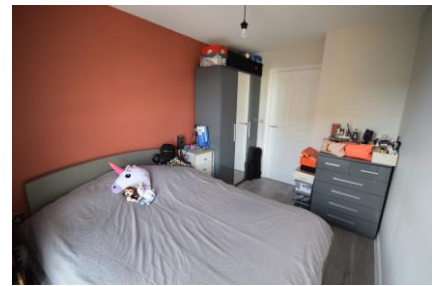


- Balcony
- Fitted Kitchen
- Family Home
- En-Suite
- Double glazing
- Great Investment
- Parking
- Offered Chain Free



A stunning 2-bedroom, 2-bathroom apartment. This property is one of kind. Finished off to an extremely high standard of fixtures and fittings. The whole property has been Newley refurbished and has been transformed into a stunning property that any family would be proud of owning. Located in the sought-after development of Parkhouse Court, this property also offers a balcony and storage. Offered Chain Free. Viewing advised.



Parkhouse Court, Hatfield, AL10



Directions
Location

Environmental Impact (CO ₂) Rating		
	Current	Potential
Very environmentally friendly - lower CO ₂ emissions		
(92-100) A	98	98
(81-91) B		
(69-80) C		
(55-68) D		
(39-54) E		
(21-38) F		
(1-20) G		
Not environmentally friendly - higher CO ₂ emissions		
England, Scotland & Wales		EU Directive 2002/91/EC 
Energy Efficiency Rating		
	Current	Potential
Very energy efficient - lower running costs		
(92-100) A		
(81-91) B		
(69-80) C	79	79
(55-68) D		
(39-54) E		
(21-38) F		
(1-20) G		
Not energy efficient - higher running costs		
England, Scotland & Wales		EU Directive 2002/91/EC 

VIEWING BY APPOINTMENT WITH AGENTS MOVING PLACES
3 Parkhouse Court, Hatfield, Herts, AL10 9RQ T: 01707 266176 E: info@moving-places.com W: www.moving-places.com

General: While we endeavour to make our sales particulars fair, accurate and reliable, they are only a general guide to the property and, accordingly, if there is any point which is of particular importance to you, please contact the office and we will be pleased to check the position for you, especially if you are contemplating travelling some distance to view the property.

Measurements: These approximate room sizes are only intended as general guidance. You must verify the dimensions carefully before ordering carpets or any built-in furniture. Services: Please note we have not tested the services or any of the equipment or appliances in this property, accordingly we strongly advise prospective buyers to commission their own survey or service reports before finalizing their offer to purchase.

THESE PARTICULARS ARE ISSUED IN GOOD FAITH BUT DO NOT CONSTITUTE REPRESENTATIONS OF FACT OR FORM PART OF ANY OFFER OR CONTRACT. THE MATTERS REFERRED TO IN THESE PARTICULARS SHOULD BE INDEPENDENTLY VERIFIED BY PROSPECTIVE BUYERS OR TENANTS. NEITHER MOVING PLACES NOR ANY OF ITS EMPLOYEES OR AGENTS HAS ANY AUTHORITY TO MAKE OR GIVE ANY REPRESENTATION OR WARRANTY WHATSOEVER IN RELATION TO THIS PROPERTY. YOUR HOME IS AT RISK IF YOU DO NOT KEEP UP REPAYMENTS ON A MORTGAGE OR OTHER LOAN SECURED ON IT.

Written quotations available on request. All loans secured on property. Life assurance is usually required.