

Offers Over £165,000 Sackville Road, Heaton, NE6



- Spacious upper apartment
- Good decor
- Double glazing
- Private rear garden
- Very smart bathroom
- Culdesac location
- Backing onto park
- Combi boiler
- Ideal first buy

*** The seller has invited best and final offers to be made no later than 12 midday on Monday 20 March to noel@noelharris.co.uk ***

Video tour (just click the tour button).

Noel Harris Home Sales are pleased to present this superbly presented three bed upper apartment which is located in a very sought after part of Heaton with the Iris Brickfield Park located beyond the southerly rear garden. The property has gas combi central heating, double glazing and a very smart bathroom with heated towel

rail. The rear garden is an absolute delight and is not directly overlooked from the rear. With good local bus services into Newcastle and The Coast within easy walking distance this lovely home will appeal to a wide range of buyers.

Council tax band A, energy rating C. Leashold with 978 years and no ground rent.

Sackville Road, Heaton, NE6

Main entrance door to :

Lobby with laminated flooring.

Lobby

with laminated flooring.

First floor landing

With cupboard.

Bedroom one

3.45m x 4.59m (11'4" x 15'1")

Into bay window. Radiator. Coving.

Bedroom two (rear)

2.73m x 3.28m (8'11" x 10'9")

With radiator. Laminated flooring. Garden views.

Bedroom three

2.47m x 3.29m (8'1" x 10'10")

Radiator. Coving.

Living room

3.37m x 4.34m (11'1" x 14'3")

With radiator. Coving. Laminated flooring. Garden view.

Kitchen

2.09m x 2.94m (6'10" x 9'8")

Fitted units with work surfaces, plumbed for washer, gas hob, electric oven and extractor hood. Cupboard with gas combi boiler.

Rear lobby

With stairs down to rear door opening into garden.

Bathroom

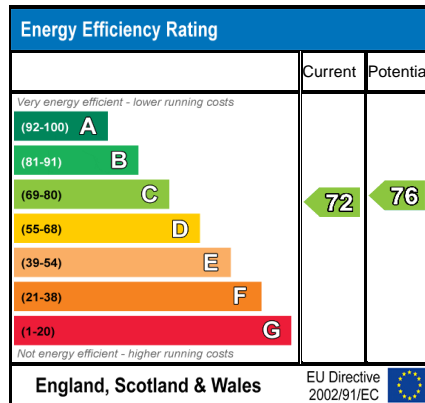
Heated towel radiator. White suite to include bath with shower over, wash basin and w.c. Access to loft.

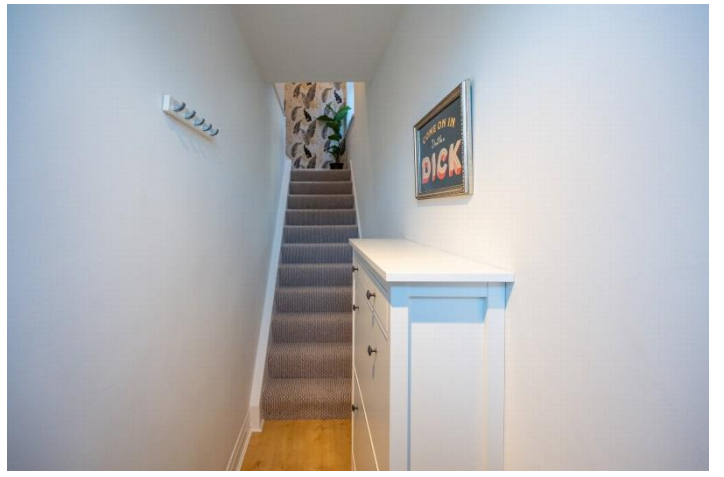
Outside

Southerly garden to rear with lawn, patio area, not directly overlooked from the rear with the Iris Brickfield Park beyond.

Leasehold

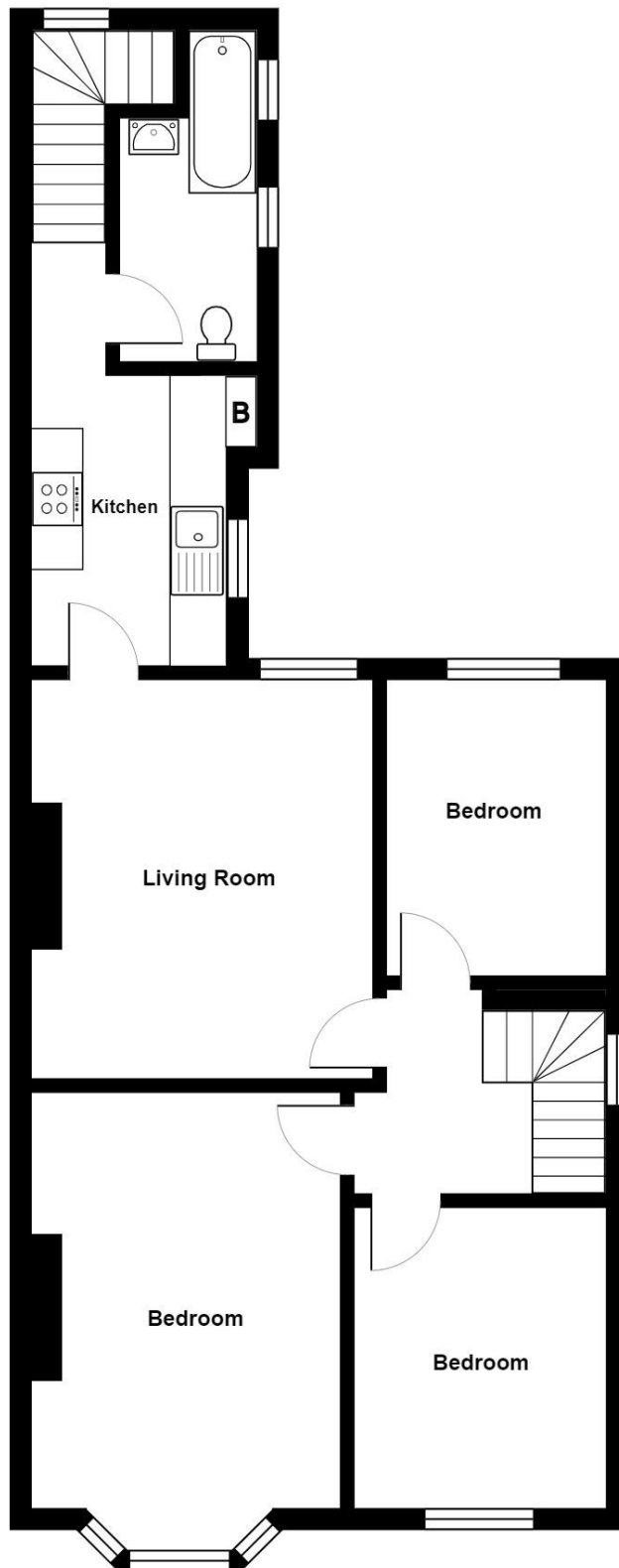
The property is leasehold with 978 years on a tyneside lease with no ground rent. This information is given in good faith and must be confirmed by your solicitor prior to exchange of contracts.







198 Sackville Road

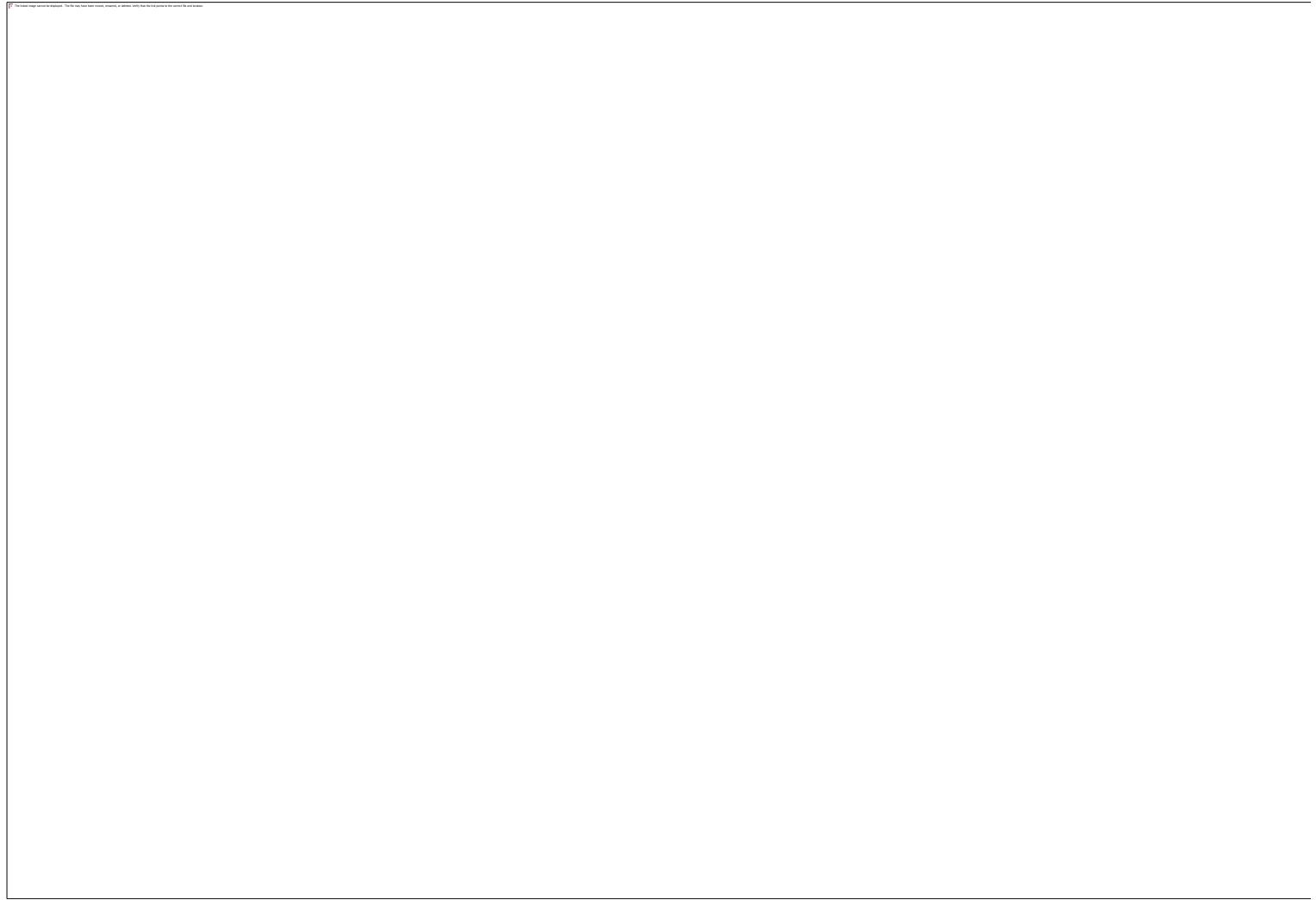


Total Area: 73.3 m² ... 789 ft²

All measurements are approximate and for display purposes only

Directions

Location



VIEWING BY APPOINTMENT WITH AGENTS NOEL HARRIS HOME SALES

Spaceworks, Benton Park Road, South Gosforth, Newcastle upon Tyne, Tyne and Wear, NE7 7LX T: 01914862029 E: noel@noelharris.co.uk W: www.noelharris.co.uk

General: While we endeavour to make our sales particulars fair, accurate and reliable, they are only a general guide to the property and, accordingly, if there is any point which is of particular importance to you, please contact the office and we will be pleased to check the position for you, especially if you are contemplating travelling some distance to view the property.

Measurements: These approximate room sizes are only intended as general guidance. You must verify the dimensions carefully before ordering carpets or any built-in furniture.

Services: Please note we have not tested the services or any of the equipment or appliances in this property, accordingly we strongly advise prospective buyers to commission their own survey or service reports before finalizing their offer to purchase.

THESE PARTICULARS ARE ISSUED IN GOOD FAITH BUT DO NOT CONSTITUTE REPRESENTATIONS OF FACT OR FORM PART OF ANY OFFER OR CONTRACT. THE MATTERS REFERRED TO IN THESE PARTICULARS SHOULD BE INDEPENDENTLY VERIFIED BY PROSPECTIVE BUYERS OR TENANTS. NEITHER NOEL HARRIS HOME SALES NOR ANY OF ITS EMPLOYEES OR AGENTS HAS ANY AUTHORITY TO MAKE OR GIVE ANY REPRESENTATION OR WARRANTY WHATEVER IN RELATION TO THIS PROPERTY.

YOUR HOME IS AT RISK IF YOU DO NOT KEEP UP REPAYMENTS ON A MORTGAGE OR OTHER LOAN SECURED ON IT.

Written quotations available on request. All loans secured on property. Life assurance is usually required.