

Alexandra Court, Farnborough

£180,000 Leasehold

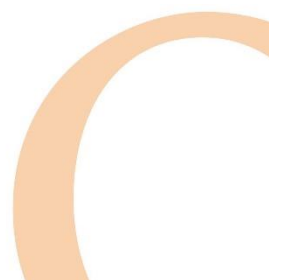


- **One Double Bedroom**
- **Open Plan Lounge/Diner**
- **Communal Parking**
- **Garage**
- **Converted Victorian Property**
- **South Farnborough**

CONVERTED VICTORIAN SCHOOL. This one-bedroom flat is situated on the top floor of a converted Victorian school in South Farnborough. The property offers open plan lounge/kitchen complimented with fitted kitchen, breakfast bar and living space. Spacious bathroom, sash windows, communal parking and garage. Located 0.3 miles of local shops whilst being only 1 mile drive from the A331 and access to M3 motorway. Bus stops conveniently located on Alexandra Road which take you to Farnborough Main Train Station for access to London Waterloo. Long lease and Band A council tax. **IDEAL PURCHASE FOR INVESTORS, FIRST TIME BUYERS OR COMMUTERS.**



Telephone: 01252 370707
Website: www.osbornesestateagents.co.uk
38a Camp Road North Camp Farnborough GU14 6EW
VAT number 124785403



Alexandra Court, Alexandra Road, Farnborough, GU14

Kitchen/Living Room - 17'9" x 12'0" (5.41m x 3.66m)

Kitchen Area -

With a range of eye and base level units with roll edge work surfaces, inset stainless steel sink with mixer tap, integrated oven, four ring electric hob with extractor fan over, space for fridge/freezer, space and plumbing for washing machine, breakfast bar, part tiled walls, rear aspect sash windows, high ceiling and lino flooring.



Living Room -

Modern electric heater, high ceiling and carpet flooring.



Bedroom - 12'1" x 8'6" (3.68m x 2.59m)

Side aspect sash windows, high ceiling, modern electric heater.



Bathroom -

This three piece bathroom suite comprises of panel enclosed bath with electric shower over, low level wc, pedestal wash basin with tiled splash back, heated towel rail, part tiled walls, lino flooring, rear aspect sash window, high ceiling with access to utility room.

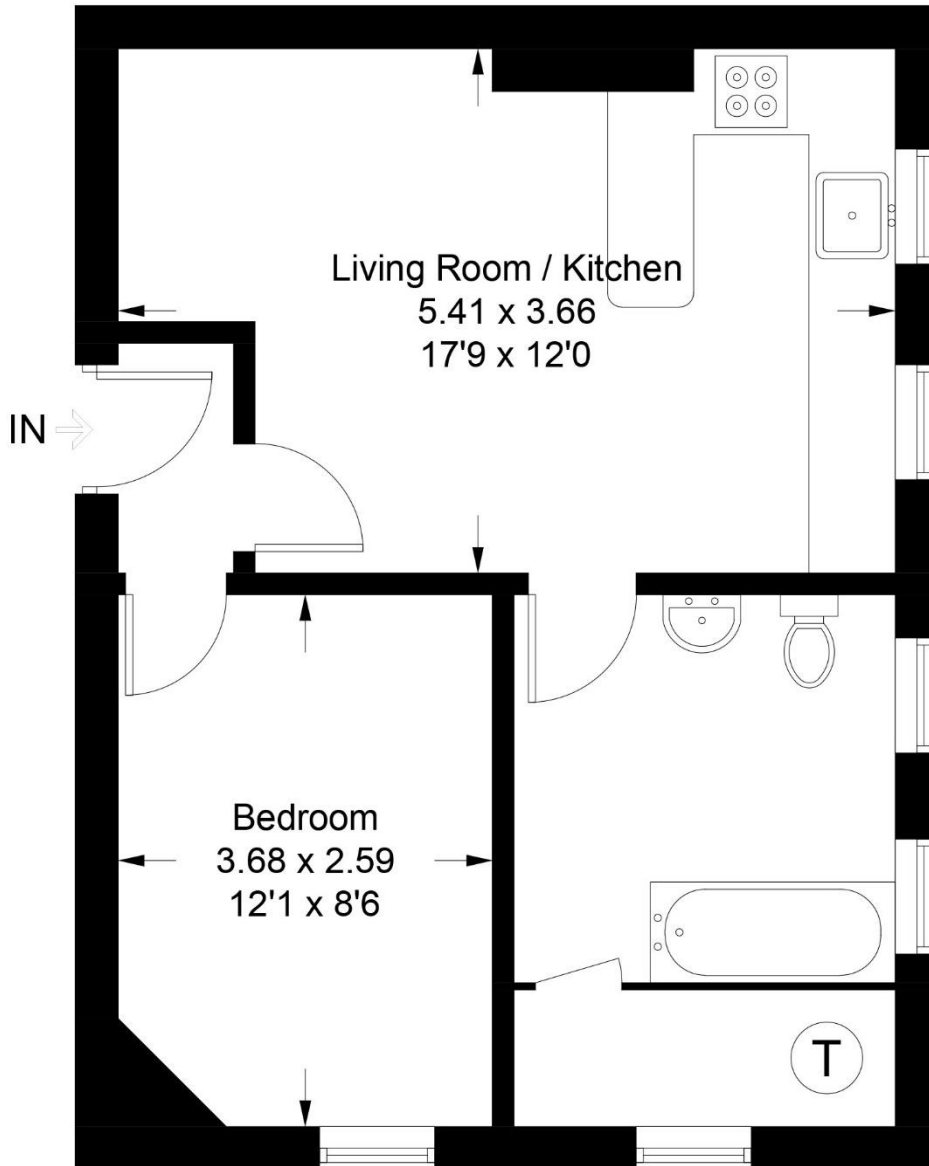
Utility Room -

Side aspect double glazed windows, hot water cylinder and tiled floor.

Outside -

Communal parking, single garage and bin storage area.

Approximate Gross Internal Area Total = 40.6 sq m / 437 sq ft



First Floor

Alexandra Court



Illustration for identification purposes only, measurements are approximate, not to scale. FloorplansUsketch.com © 2020 (ID703254)