



Osbornes
Independent estate agents

Aquinna House
Kingfisher Drive |
Camberley | GU15

TWO DOUBLE BEDROOM APARTMENT. The property is conveniently located within walking distance of Camberley town centre. Internally the accommodation comprises; 18ft approx.

Two Double Bedrooms | Modern Kitchen with appliances | Modern Bathroom | Ensuite to Master Bedroom | Close to Camberley Town Centre | Balcony

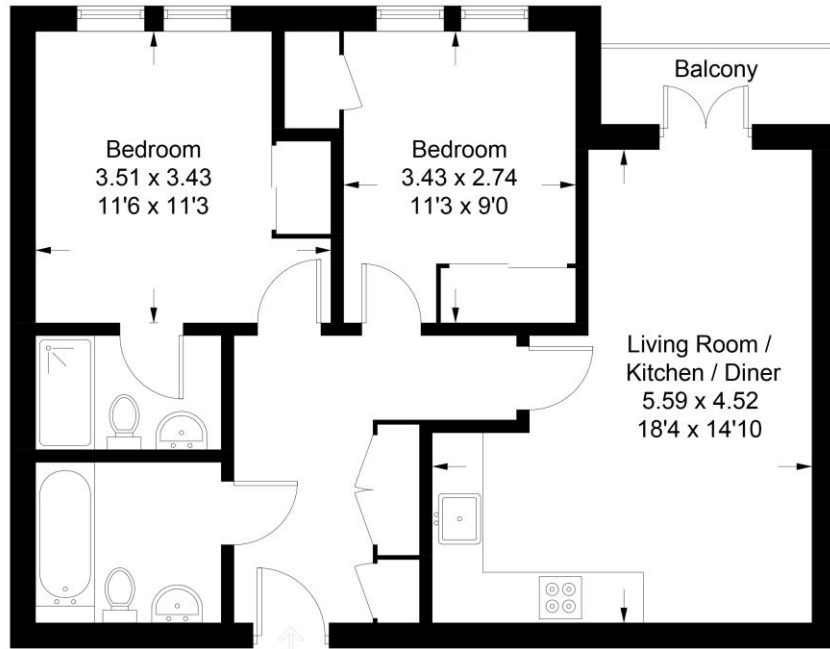
£1,500 per month

TWO DOUBLE BEDROOM APARTMENT. The property is conveniently located within walking distance of Camberley town centre. Internally the accommodation comprises; 18ft approx. lounge/diner with double doors leading out onto balcony, modern kitchen with integrated appliances, two double bedrooms with built-in wardrobes, en suite to master bedroom. Externally the property benefits from allocated parking and a communal bin and bike storage which is all within a secluded and private parking area. There is also access to a large communal sun terrace.





Approximate Gross Internal Area Total = 60.8 sq m / 654 sq ft



Second Floor



Aquinna House

Illustration for identification purposes only, measurements are approximate, not to scale. FloorplansUsketch.com © 2020 (ID662624)

Osbornes Estate Agents

38a Camp Road, Farnborough, Hampshire, GU14

01252 370707 | info@osbornesestateagents.co.uk | www.osbornesestateagents.co.uk

Important Notice - These particulars have been prepared in good faith and they are not intended to constitute part of an offer or contract. We have not performed a structural survey on this property and the services, appliances and specific fittings have not been tested. All photographs, measurements, floor plans and distances referred to are given as a guide and should not be relied upon.

