



Osbornes
Independent estate agents

Lynchford Road | Farnborough

SPACIOUS APARTMENT. This one double bedroom apartment is offered to the market in our opinion in good order throughout.

One Double Bedroom | Share of Freehold | Gas Central Heating | Kitchen/Breakfast Room | Open Fireplace | Allocated Parking

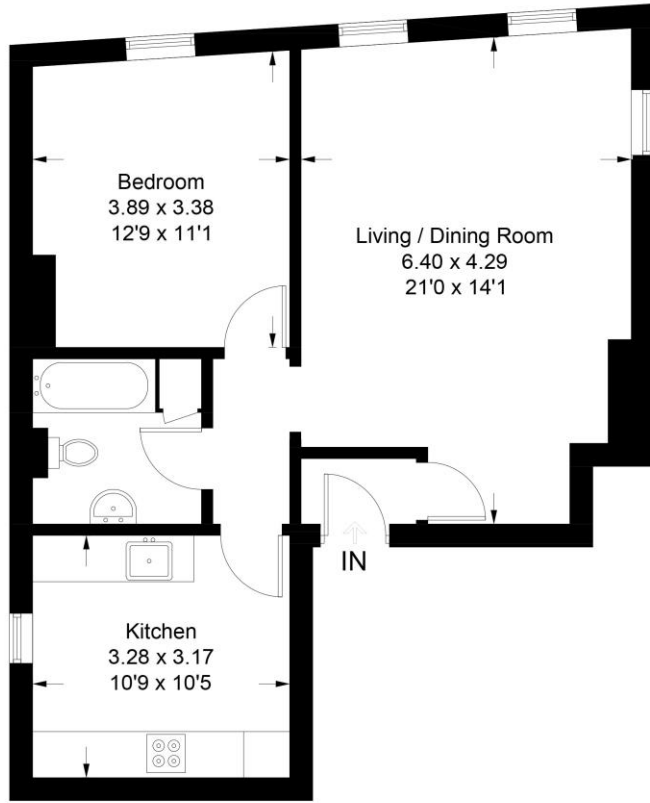
£150,000 | Share of Freehold

SPACIOUS APARTMENT. This one double bedroom apartment is offered to the market in our opinion in good order throughout. The property benefits from a kitchen/breakfast room, gas central heating, fitted bathroom, spacious living room with working feature open fireplace, share of freehold and allocated off street parking. Located in South Farnborough set in an ideal location for the commuter with excellent bus routes, rail, road and general transport networks, Farnborough mainline station will take you into London Waterloo in under 40 minutes and there is access to the M3 bringing Farnham, Fleet, Basingstoke and Camberley within easy reach.





Approximate Gross Internal Area Total = 58.7 sq m / 632 sq ft



First Floor



Lynchford Road

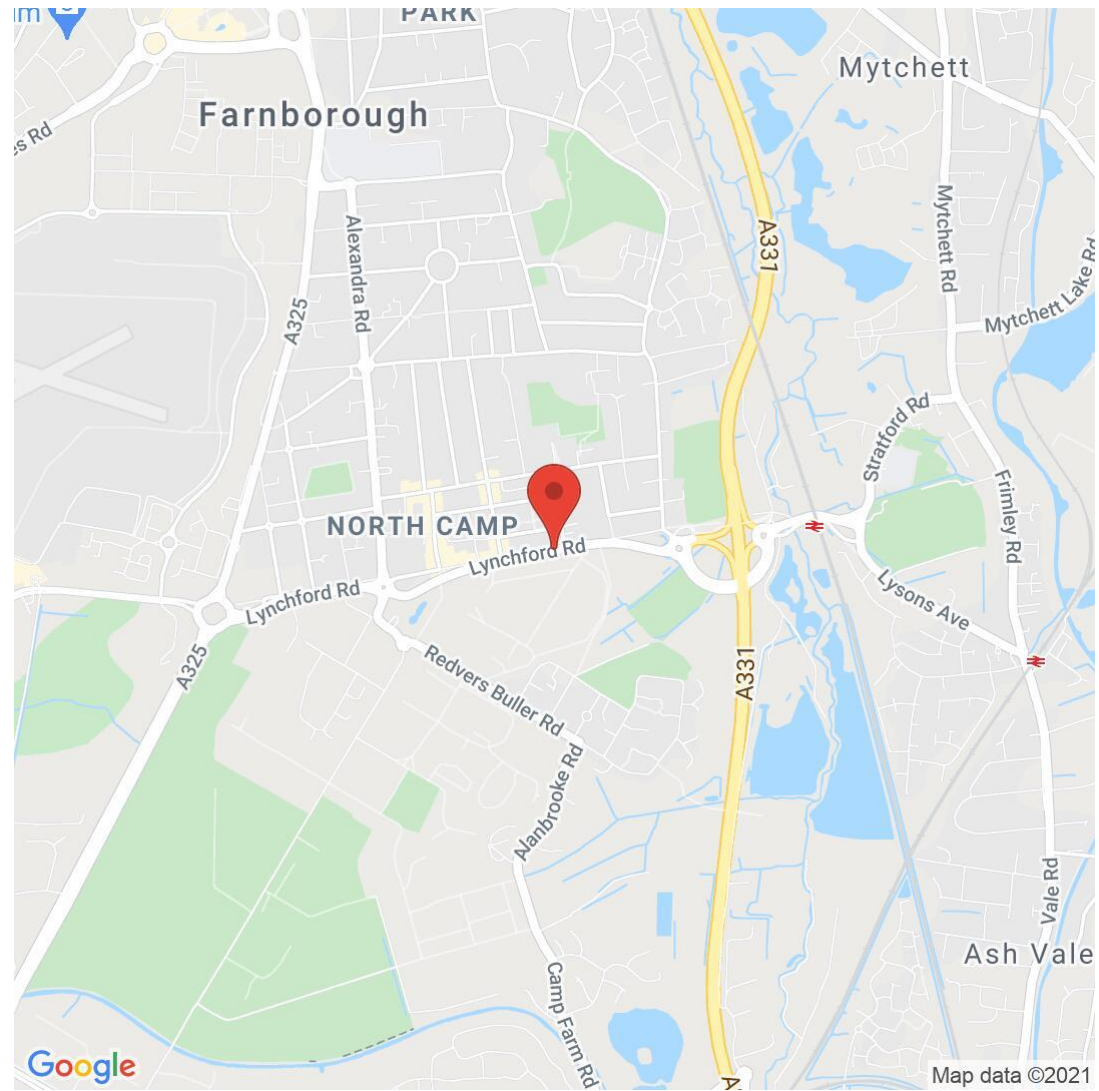
Illustration for identification purposes only, measurements are approximate, not to scale. FloorplansUsketch.com © 2021 (ID730091)

Osbornes Estate Agents

38a Camp Road, Farnborough, Hampshire, GU14

01252 370707 | info@osbornesestateagents.co.uk | www.osbornesestateagents.co.uk

Important Notice - These particulars have been prepared in good faith and they are not intended to constitute part of an offer or contract. We have not performed a structural survey on this property and the services, appliances and specific fittings have not been tested. All photographs, measurements, floor plans and distances referred to are given as a guide and should not be relied upon.



Energy Efficiency Rating		Current	Potential
Very energy efficient - lower running costs			
(92-100)	A		
(81-91)	B		
(69-80)	C		
(55-68)	D	65	73
(39-54)	E		
(21-38)	F		
(1-20)	G		
Not energy efficient - higher running costs			
England, Scotland & Wales		EU Directive 2002/91/EC	