



**Osbornes**  
Independent estate agents

Heron Close | Mytchett

# This refurbished extended semi-detached house is located in the sought-after area of Mytchett, Camberley, Surrey.

Semi Detached | Three Bedrooms | Two Bathrooms | Modern Open Plan Living | Enclosed Rear Garden | Garage & Off Street Parking

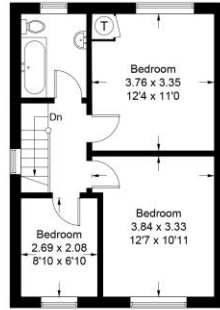
**Offers in excess of £525,000 | Freehold**

This refurbished extended semi-detached house is located in the sought-after area of Mytchett, Camberley, Surrey. With three bedrooms and a spacious open plan kitchen/living space, this property offers ample space for comfortable family living. Upon entering the property, you are welcomed into a bright and airy hallway, leading through to the modern open plan living space. The beautifully designed kitchen has been extended to provide a stunning family living area with plenty of natural light streaming through the large windows and bi-fold doors. The property further benefits from a separate dedicated utility space and modern shower room. The kitchen is fully fitted with high-quality appliances and modern units, providing ample storage, worktop space and centre island. The living area features large bi-fold doors that open onto a private patio, perfect for al fresco dining and entertaining guests. Upstairs, you will find three b

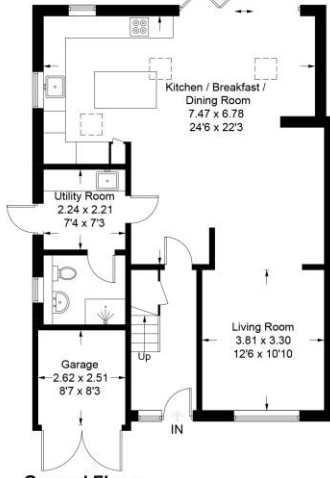




Approximate Gross Internal Area  
 Ground Floor = 77.5 sq m / 834 sq ft  
 First Floor = 41.1 sq m / 442 sq ft  
 Garage = 6.2 sq m / 67 sq ft  
 Total = 124.8 sq m / 1343 sq ft



First Floor

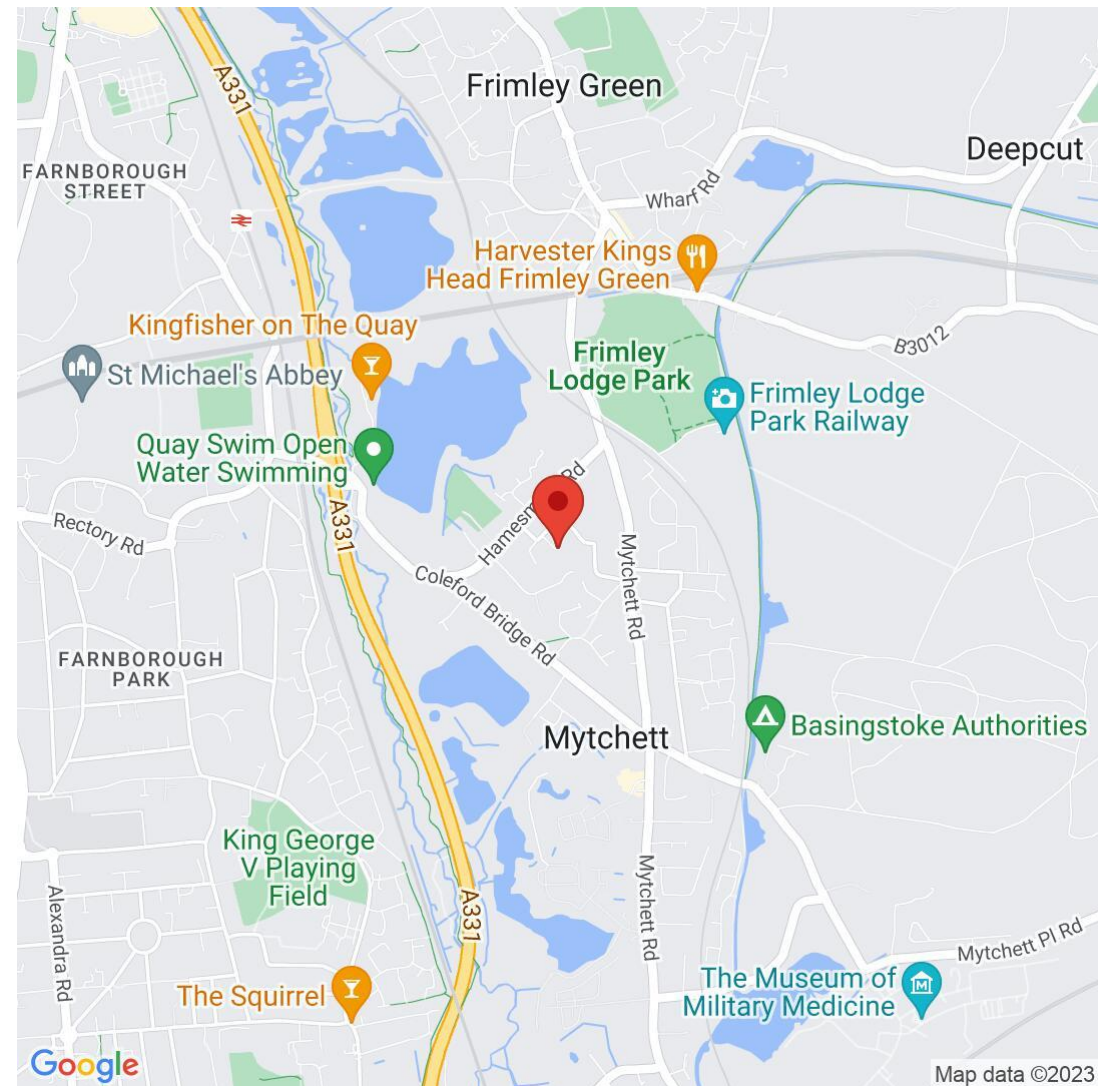


Ground Floor



Heron Close

Illustration for identification purposes only, measurements are approximate, not to scale. FloorplansUsketch.com © 2023 (ID962203)



## Osbornes Estate Agents

38a Camp Road, Farnborough, Hampshire, GU14

01252 370707 | info@osbornesestateagents.co.uk | www.osbornesestateagents.co.uk

Important Notice - These particulars have been prepared in good faith and they are not intended to constitute part of an offer or contract. We have not performed a structural survey on this property and the services, appliances and specific fittings have not been tested. All photographs, measurements, floor plans and distances referred to are given as a guide and should not be relied upon.