



Osbornes
Independent estate agents

Rodmel Court | Farnborough

CUL-DE-SAC LOCATION. A two double bedroom terraced house situated on the popular Sycamore Park development close to King George V playing fields.

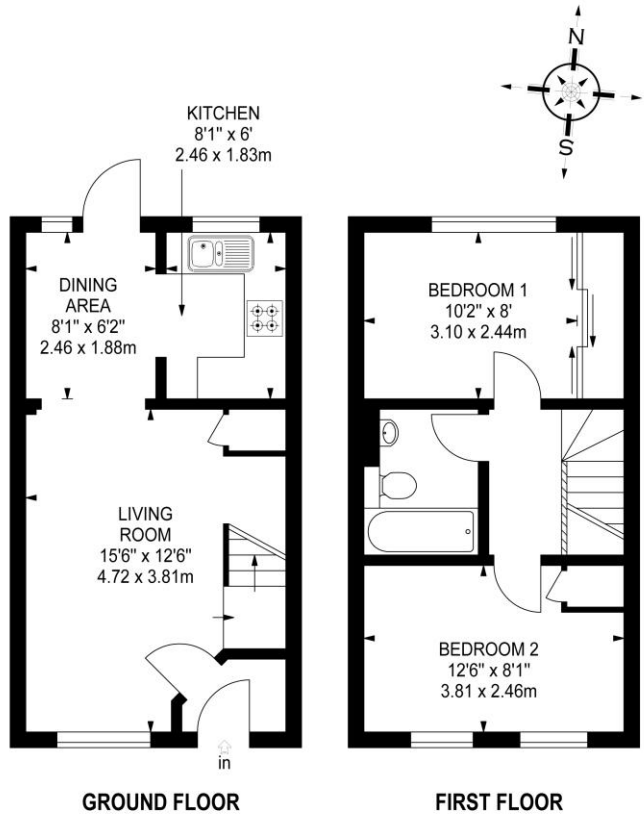
Two Double Bedrooms | Two Reception Rooms | Double Glazing | Private Garden | Driveway Parking | Available Now

£1,350 per month

CUL-DE-SAC LOCATION. A two double bedroom terraced house situated on the popular Sycamore Park development close to King George V playing fields. In good decorative order throughout. The property benefits from two reception rooms, double glazing, enclosed rear garden and allocated parking for driveway parking. Available Now. Council Tax Band: C - EPC Band: C







GROUND FLOOR

FIRST FLOOR

REF - OSB 9 RCT

APPROX. GROSS INTERNAL FLOOR AREA 600 SQ FT / 55.74 SQ M

This plan is for layout guidance only. Not drawn to scale unless stated. Windows & door openings are approximate. Whilst every care is taken in the preparation of this plan, please check all dimensions, shapes & compass bearings before making any decisions reliant upon them. Estate Services © 2012 www.estateservices.org.uk

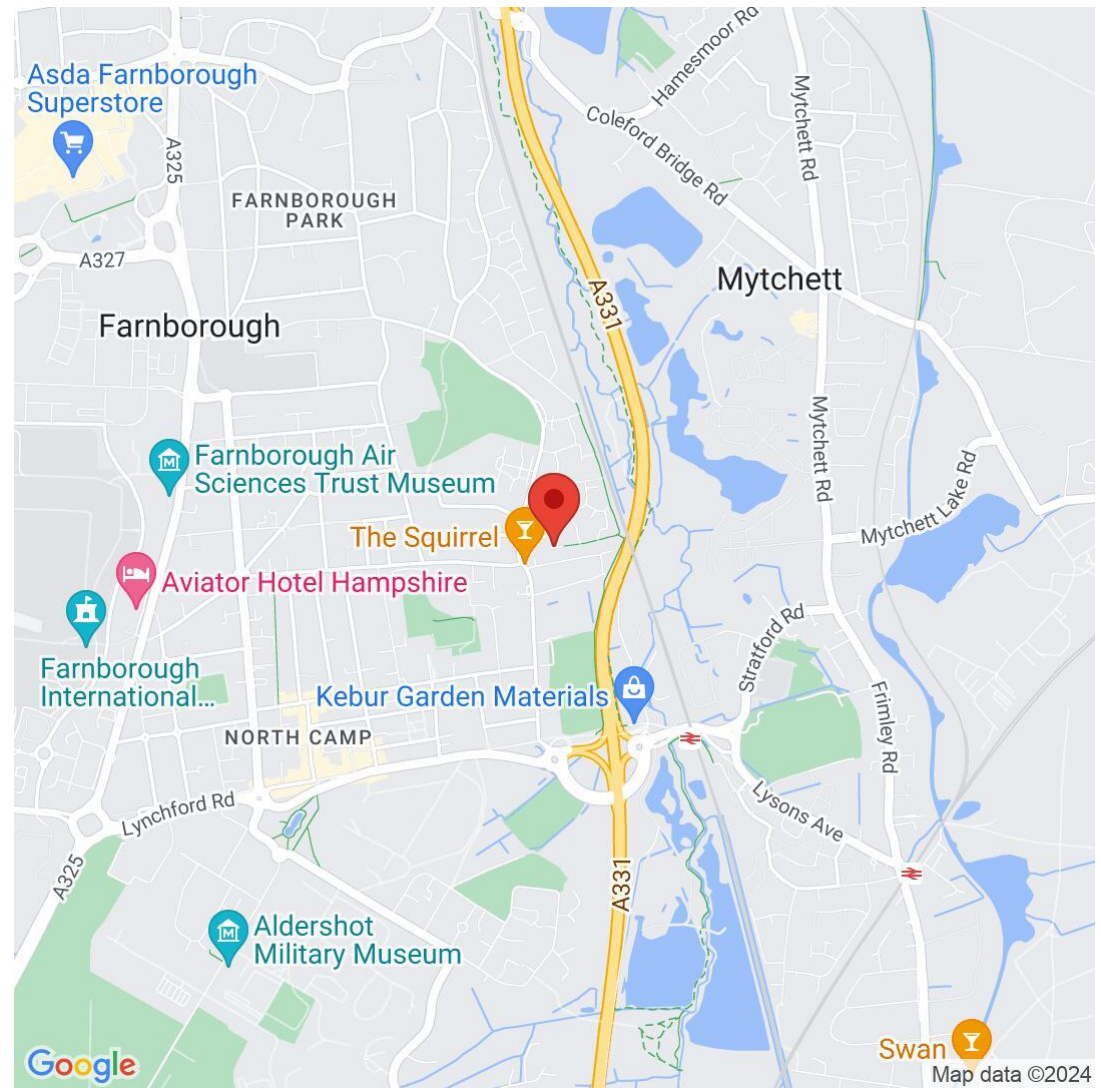


Osbornes Estate Agents

38a Camp Road, Farnborough, Hampshire, GU14

01252 370707 | info@osbornesestateagents.co.uk | www.osbornesestateagents.co.uk

Important Notice - These particulars have been prepared in good faith and they are not intended to constitute part of an offer or contract. We have not performed a structural survey on this property and the services, appliances and specific fittings have not been tested. All photographs, measurements, floor plans and distances referred to are given as a guide and should not be relied upon.



Energy Efficiency Rating		Current	Potential
Very energy efficient - lower running costs			
(92-100)	A		
(81-91)	B		
(69-80)	C		
(55-68)	D	65	69
(39-54)	E		
(21-38)	F		
(1-20)	G		
Not energy efficient - higher running costs			
England, Scotland & Wales		EU Directive 2002/91/EC	