



**Osbornes**  
Independent estate agents

Douai Close | Farnborough

# Osbornes Estate Agents are delighted to present this charming three-bedroom semi-detached home which requires some refurbishment after being in the same family for over 30 years.

End of Chain | Requires Refurbishment | Three Bedrooms | Three Reception Rooms | Scenic Views

**£425,000 | Freehold**

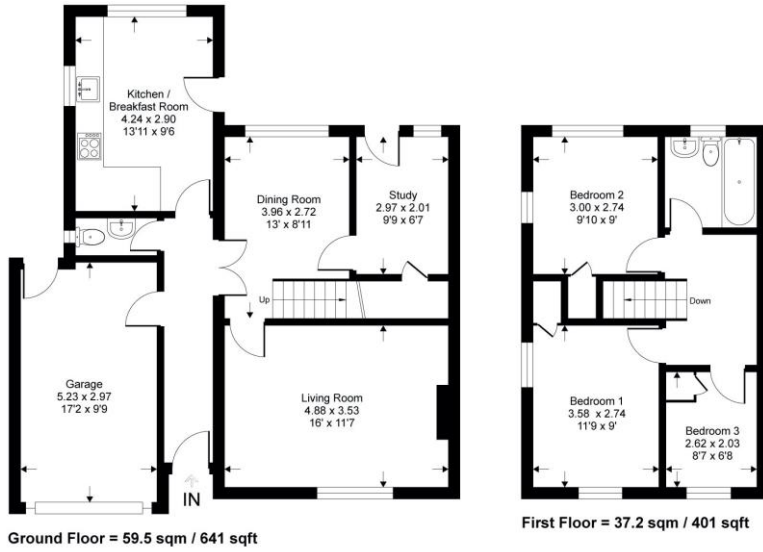
Osbornes Estate Agents are delighted to present this charming three-bedroom semi-detached home which requires some refurbishment after being in the same family for over 30 years. Nestled in a quiet cul-de-sac in Farnborough, this End of Chain property offers a perfect blend of convenience and tranquillity, this spacious property boasts generous living areas, a level garden with breathtaking rear views over open fields and Farnborough Monastery. The ground floor features a bright and airy living room with a feature fireplace and large windows that allow natural light to flood the space. Adjacent to the lounge is a separate dining room, ideal for entertaining, with views overlooking the rear garden. With study located off the dining room and door onto the rear garden. The well-sized kitchen provides ample storage and workspace, with enough room for a breakfast table, making it a great space for casual dining.





## Douai Close

Approximate Gross Internal Area = 96.8 sq m / 1042 sq ft  
Approximate Garage Internal Area = 15.3 sq m / 165 sq ft  
Approximate Total Internal Area = 112.1 sq m / 1207 sq ft



Whilst every attempt has been made to ensure the accuracy of the floor plan contained here, measurements of doors, windows, rooms and any other items are approximate and no responsibility is taken for any error, omission or mis-statement. This plan is for illustrative purposes only and should be used as such by any prospective purchaser.

## Osbornes Estate Agents

38a Camp Road, Farnborough, Hampshire, GU14

01252 370707 | info@osbornesestateagents.co.uk | www.osbornesestateagents.co.uk

Important Notice - These particulars have been prepared in good faith and they are not intended to constitute part of an offer or contract. We have not performed a structural survey on this property and the services, appliances and specific fittings have not been tested. All photographs, measurements, floor plans and distances referred to are given as a guide and should not be relied upon.

