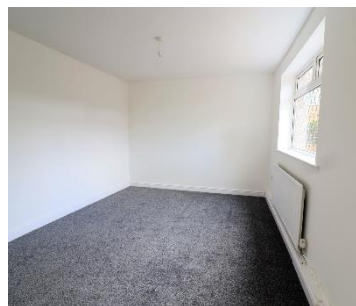




**Redcar**  
Letting & Sales  
Company Ltd



**TO  
LET**



**Ashdown Way, Billingham, TS23**

**£600 per month**

- New fitted kitchen
- Close to local shops
- 3 Bedrooms
- Combi Boiler
- New carpets throughout

- Rear yard
- Close to local schools
- Gas central heating
- Modern tiled bathroom
- Under stairs storage

# Ashdown Way, Billingham, TS23

Move In Costs Deposit £600 Rent £600 Holding Payment £138.46 We are proudly Members of the following: Safeagent, The Tenancy Deposit Scheme, The Deposit Protection Service and The Property Ombudsman. Please note that a guarantor may be required depending on circumstances. Please contact the office on 01642 483430 for more information.

## Hallway 6'1" x 16'7"

Carpeted, Radiator, Pendant light, Smoke Alarm, Large storage cupboard

## Kitchen 12'6" x 9'7"

Stainless steel sink, Mixer tap, Boiler, Electric hob and oven, Extractor fan, vinyl flooring, LED spotlights, Large window.

## Dining Room 12'8" x 10'3"

Carpeted, Pendant light, Large window, Radiator

## Living Room 12'6" x 11'1"

Carpeted, Radiator, TV and internet points, Pendant light

## Landing 8'8" x 6'1"

Carpeted, Pendant Light, Smoke Alarm

## Bathroom 8'0" x 5'5"

Tiled Floor, Bath, Shower, Toilet, Vanity Unit, LED spotlights, Extractor fan, Stainless Steel Radiator

## Bedroom 1 12'7" x 12'5"

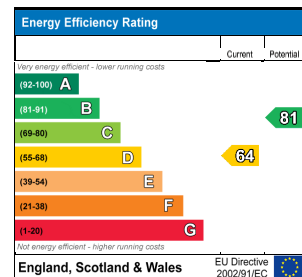
Carpeted, Radiator, Pendant light, Window

## Bedroom 2 12'6" x 10'9"

Carpeted, Radiator, Pendant light, Window, Built in Cupboard

## Bedroom 3 8'8" x 7'7"

Carpeted, Radiator, Pendant light, Window, Built in Cupboard



Whilst every care is taken to ensure the accuracy of these details no responsibility for errors or misdescription can be accepted nor is any guarantee offered in respect of the property. These particulars do not constitute any part of an offer or contract.