

**£395,000**

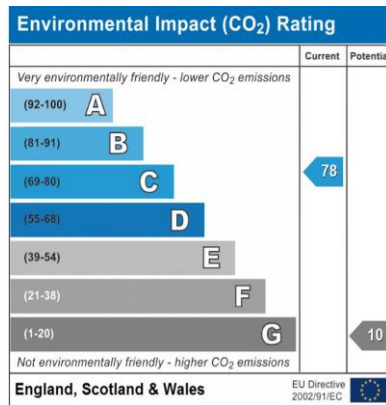
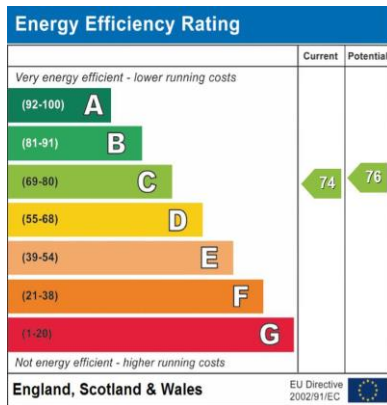
**Brecknock Road, Tufnell Park, N19**



- Period Conversion
- Spacious
- Bright
- Well Porportioned
- Convenient Location

A very well presented first floor conversion within a Victorian house, situated within very close proximity of Tufnell Park & Kentish Town and all its amenities. The well-proportioned accommodation comprises a spacious reception room, semi open kitchen, double bedroom and bathroom. Benefiting from high ceilings, good natural light and high ceilings

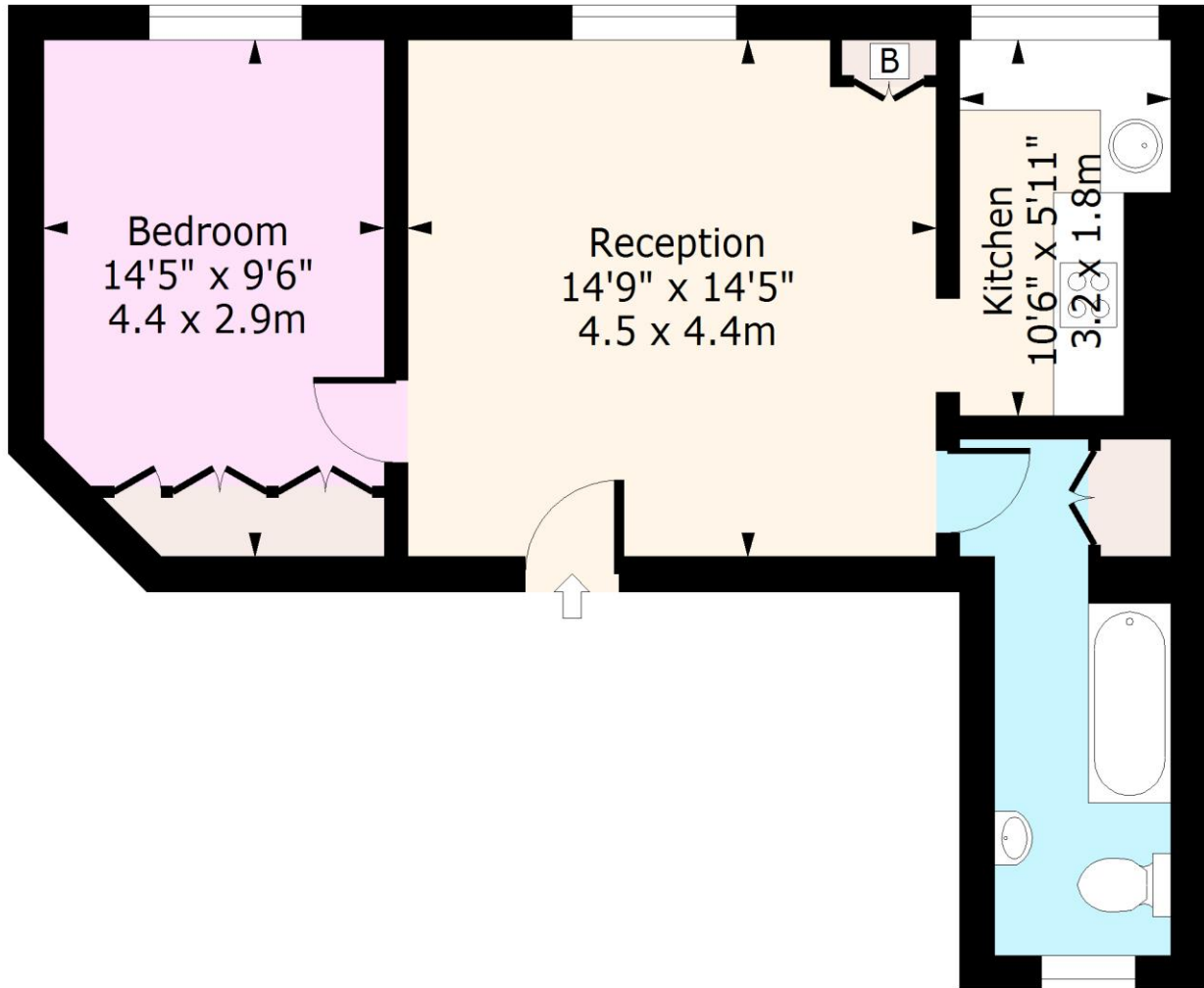
# Brecknock Road, Tufnell Park, N19





# Brecknock Road, N19

Approx. Gross Internal Area 504 Sq Ft - 46.82 Sq M



## First Floor

Floor Area 504 Sq Ft - 46.82 Sq M

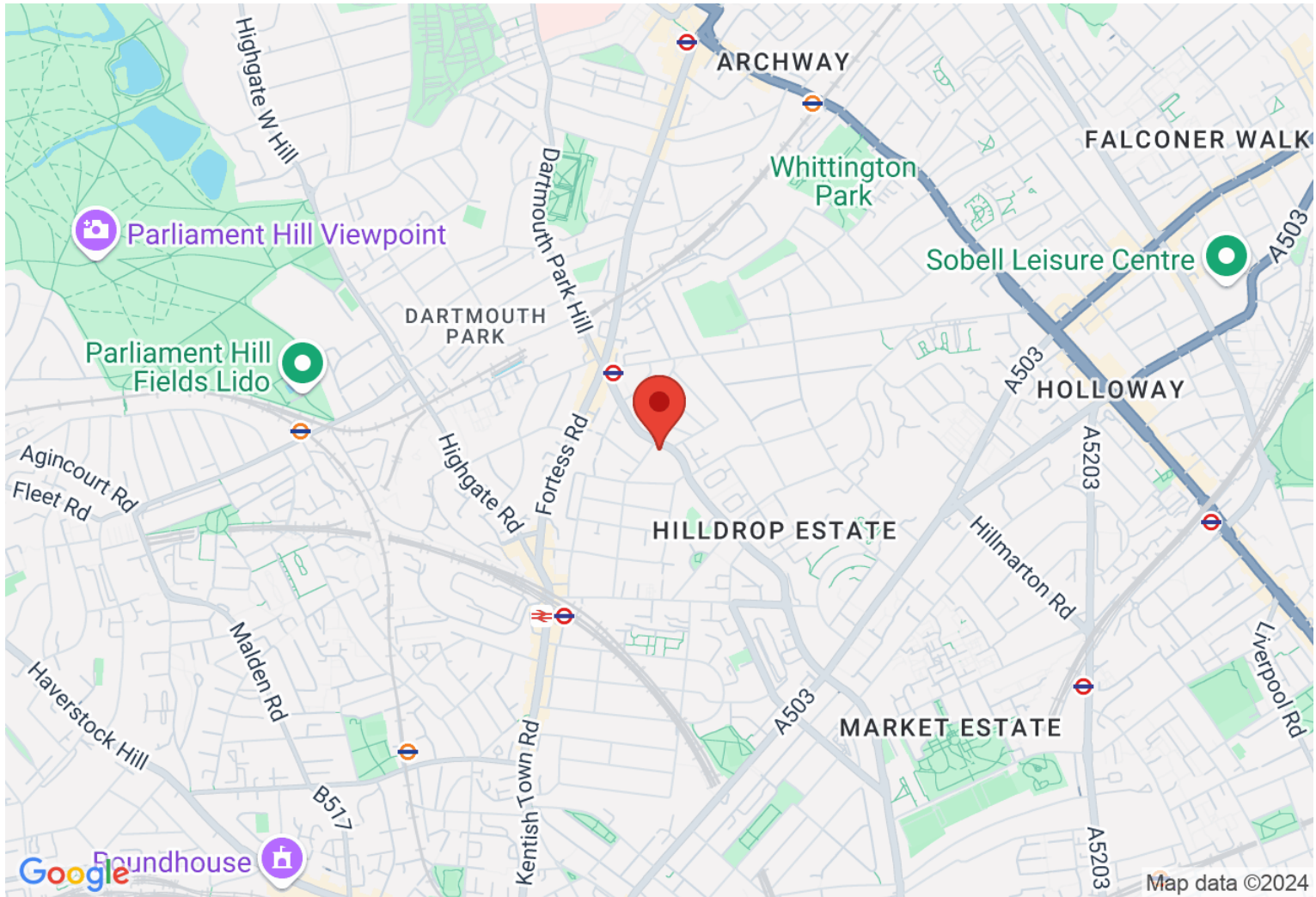
For Illustration Purposes Only - Not To Scale

[www.lpaplus.com](http://www.lpaplus.com)



## Directions

## Location



### VIEWING BY APPOINTMENT WITH AGENTS ROCHESTER PLACE

161 Kentish Town Road, Camden, London, NW1 8PD T: 020 7284 4747 E: [info@rochesterplace.co.uk](mailto:info@rochesterplace.co.uk) W: [www.rochesterplace.co.uk](http://www.rochesterplace.co.uk)

**General:** While we endeavour to make our sales particulars fair, accurate and reliable, they are only a general guide to the property and, accordingly, if there is any point which is of particular importance to you, please contact the office and we will be pleased to check the position for you, especially if you are contemplating travelling some distance to view the property.

**Measurements:** These approximate room sizes are only intended as general guidance. You must verify the dimensions carefully before ordering carpets or any built-in furniture. **Services:** Please note we have not tested the services or any of the equipment or appliances in this property, accordingly we strongly advise prospective buyers to commission their own survey or service reports before finalizing their offer to purchase.

**THESE PARTICULARS ARE ISSUED IN GOOD FAITH BUT DO NOT CONSTITUTE REPRESENTATIONS OF FACT OR FORM PART OF ANY OFFER OR CONTRACT. THE MATTERS REFERRED TO IN THESE PARTICULARS SHOULD BE INDEPENDENTLY VERIFIED BY PROSPECTIVE BUYERS OR TENANTS. NEITHER ROCHESTER PLACE NOR ANY OF ITS EMPLOYEES OR AGENTS HAS ANY AUTHORITY TO MAKE OR GIVE ANY REPRESENTATION OR WARRANTY WHATSOEVER IN RELATION TO THIS PROPERTY. YOUR HOME IS AT RISK IF YOU DO NOT KEEP UP REPAYMENTS ON A MORTGAGE OR OTHER LOAN SECURED ON IT.**

Written quotations available on request. All loans secured on property. Life assurance is usually required.