

£1,895,000

Tufnell Park Road, Tufnell Park, N7



- Victorian terrace home
- South facing garden
- Roof terrace
- Tall ceilings
- Wide oak wooden floors
- Storage cellar
- 2 Reception rooms
- 2 Bathrooms

We are delighted to be able to present this stylish and spacious family home set within a brick Victorian terrace over 3 stories in the heart of the desirable village of Tufnell Park with a beautiful south facing garden and roof terrace.

This home has a wealth of period features with tall ceilings, original ornate coving and fireplaces, sash windows, secondary glazing at the front with stylish plantation shutters. The entire property has been thoughtfully designed and no expense spared in the choice of finishes. The hallway and lounge has beautiful wide oak wooden floors and luxurious carpeting on the upper floors. The house currently offers 4

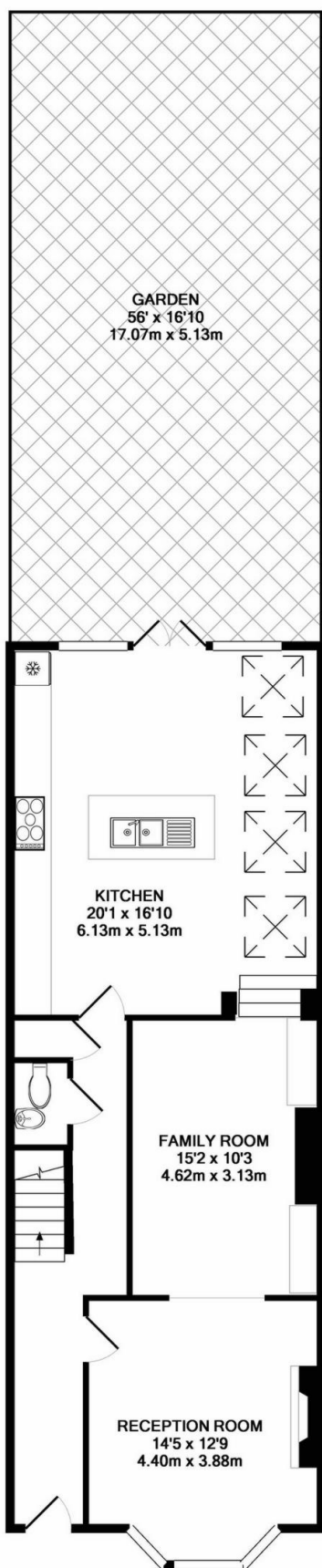
bedrooms with the possibility of creating further rooms in the loft space with planning permission to add a dormer. There are two bathrooms, a WC, a storage cellar and 2 reception rooms.

Tufnell Park Road, Tufnell Park, N7

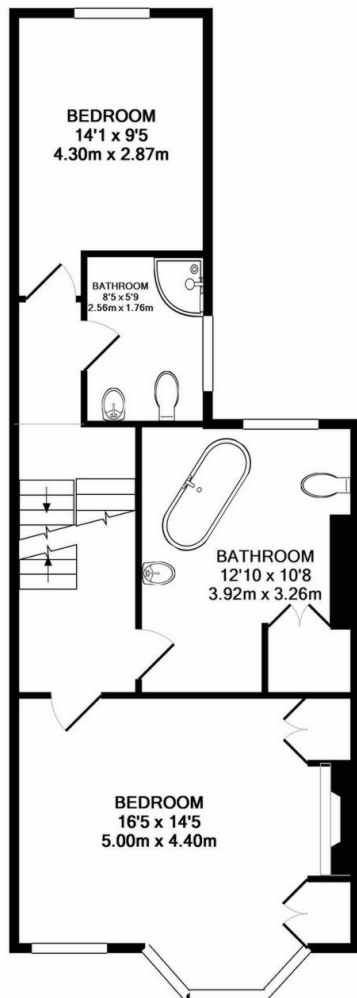




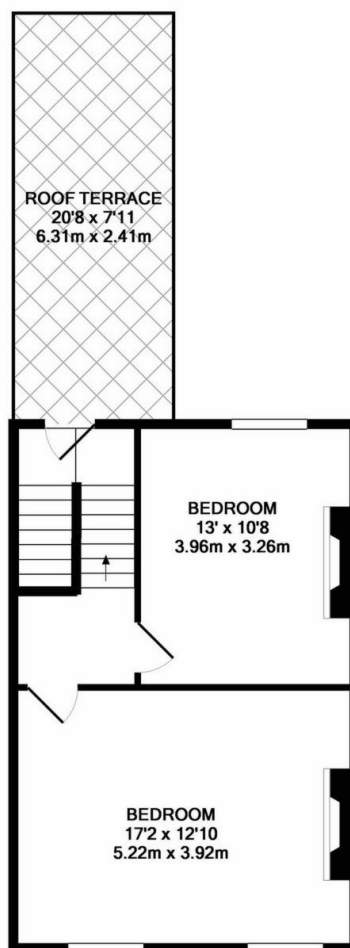




GROUND FLOOR
APPROX. FLOOR
AREA 805 SQ.FT.
(74.8 SQ.M.)



1ST FLOOR
APPROX. FLOOR
AREA 635 SQ.FT.
(59.0 SQ.M.)



2ND FLOOR
APPROX. FLOOR
AREA 435 SQ.FT.
(40.4 SQ.M.)

TUFNELL PARK ROAD, N7
TOTAL APPROX. FLOOR AREA 1876 SQ.FT. (174.2 SQ.M.)

Floorplans are for identification and guideline purposes only, not to scale. Compliant with RICS code of measuring practice. Floor plan supplied by Chik Chak Limited. Made with Metropix ©2018

Directions

Location



VIEWING BY APPOINTMENT WITH AGENTS ROCHESTER PLACE

161 Kentish Town Road, Camden, London, NW1 8PD T: 020 7284 4747 E: info@rochesterplace.co.uk W: www.rochesterplace.co.uk

General: While we endeavour to make our sales particulars fair, accurate and reliable, they are only a general guide to the property and, accordingly, if there is any point which is of particular importance to you, please contact the office and we will be pleased to check the position for you, especially if you are contemplating travelling some distance to view the property.

Measurements: These approximate room sizes are only intended as general guidance. You must verify the dimensions carefully before ordering carpets or any built-in furniture. Services: Please note we have not tested the services or any of the equipment or appliances in this property, accordingly we strongly advise prospective buyers to commission their own survey or service reports before finalizing their offer to purchase.

THESE PARTICULARS ARE ISSUED IN GOOD FAITH BUT DO NOT CONSTITUTE REPRESENTATIONS OF FACT OR FORM PART OF ANY OFFER OR CONTRACT. THE MATTERS REFERRED TO IN THESE PARTICULARS SHOULD BE INDEPENDENTLY VERIFIED BY PROSPECTIVE BUYERS OR TENANTS. NEITHER ROCHESTER PLACE NOR ANY OF ITS EMPLOYEES OR AGENTS HAS ANY AUTHORITY TO MAKE OR GIVE ANY REPRESENTATION OR WARRANTY WHATSOEVER IN RELATION TO THIS PROPERTY. YOUR HOME IS AT RISK IF YOU DO NOT KEEP UP REPAYMENTS ON A MORTGAGE OR OTHER LOAN SECURED ON IT.

Written quotations available on request. All loans secured on property. Life assurance is usually required.