

£895,000

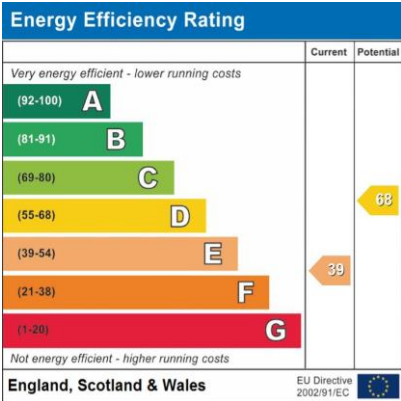
Carlow House, Carlow Street, Camden, NW1



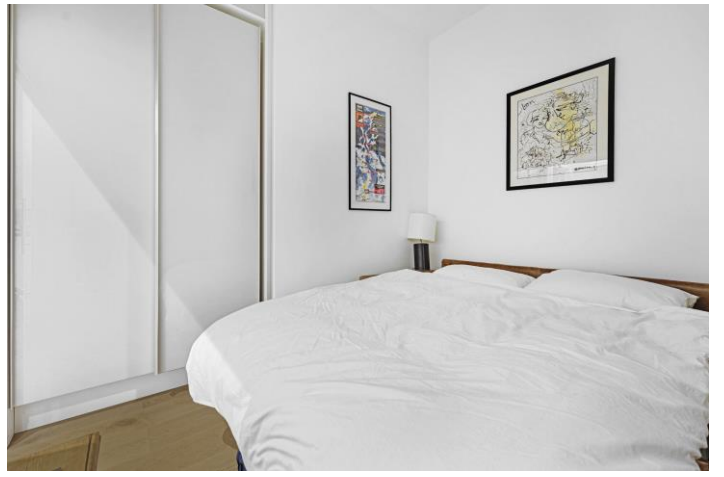
- Rarely available
- Warehouse style flat
- Over 900 square feet
- Tall ceilings
- Modern fittings
- Open plan living
- Short walk to underground

We are pleased to present this rarely available, unique and stylish 2 bed contemporary warehouse style flat, offering over 900 square feet, with tall ceilings, modern fittings, open plan living and a lot of wow. This well located property is ideal to reach central London and is just a 2 minute walk to Mornington Crescent station and with all the amenities of Camden Town being just a short walk away. There are numerous bus routes to the West End and Euston, Tottenham Court Road and Kings Cross are all within walking distance. This is the perfect home to both relax and entertain guests. Please contact us for more details.

Carlow House, Carlow Street, Camden, NW1

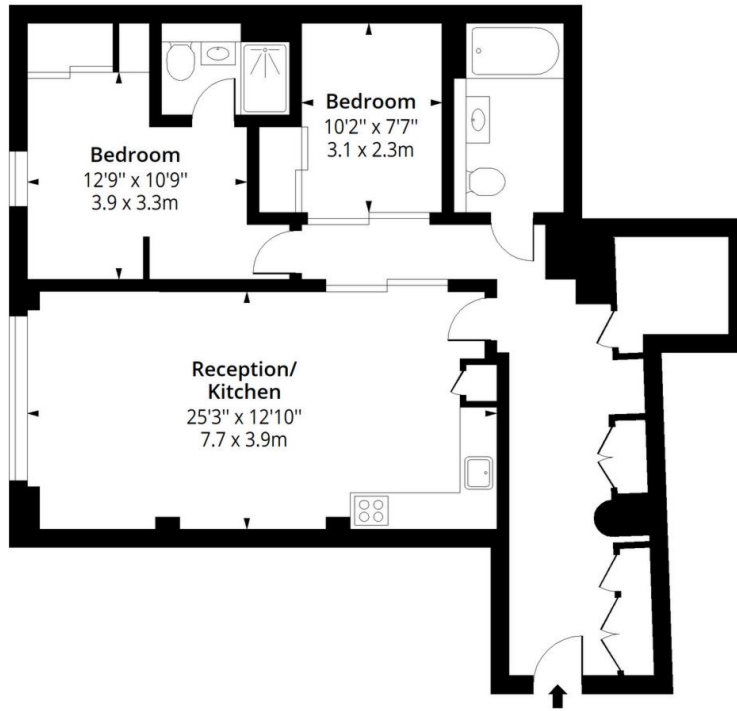






Carlow House, NW1

Approx. Gross Internal Area 934 Sq Ft - 86.77 Sq M



Ground Floor

Floor Area 934 Sq Ft - 86.77 Sq M



Measured according to RICS IPMS2. Floor plan is for illustrative purposes only and is not to scale. Every attempt has been made to ensure the accuracy of the floor plan shown, however all measurements, fixtures, fittings and data shown are an approximate interpretation for illustrative purposes only. 1 sq m = 10.76 sq feet.

lpaplus.com

Date: 23/8/2024

Directions

Location



VIEWING BY APPOINTMENT WITH AGENTS ROCHESTER PLACE

161 Kentish Town Road, Camden, London, NW1 8PD T: 020 7284 4747 E: info@rochesterplace.co.uk W: www.rochesterplace.co.uk

General: While we endeavour to make our sales particulars fair, accurate and reliable, they are only a general guide to the property and, accordingly, if there is any point which is of particular importance to you, please contact the office and we will be pleased to check the position for you, especially if you are contemplating travelling some distance to view the property.

Measurements: These approximate room sizes are only intended as general guidance. You must verify the dimensions carefully before ordering carpets or any built-in furniture. **Services:** Please note we have not tested the services or any of the equipment or appliances in this property, accordingly we strongly advise prospective buyers to commission their own survey or service reports before finalizing their offer to purchase.

THESE PARTICULARS ARE ISSUED IN GOOD FAITH BUT DO NOT CONSTITUTE REPRESENTATIONS OF FACT OR FORM PART OF ANY OFFER OR CONTRACT. THE MATTERS REFERRED TO IN THESE PARTICULARS SHOULD BE INDEPENDENTLY VERIFIED BY PROSPECTIVE BUYERS OR TENANTS. NEITHER ROCHESTER PLACE NOR ANY OF ITS EMPLOYEES OR AGENTS HAS ANY AUTHORITY TO MAKE OR GIVE ANY REPRESENTATION OR WARRANTY WHATSOEVER IN RELATION TO THIS PROPERTY. YOUR HOME IS AT RISK IF YOU DO NOT KEEP UP REPAYMENTS ON A MORTGAGE OR OTHER LOAN SECURED ON IT.

Written quotations available on request. All loans secured on property. Life assurance is usually required.