



**SEYMOURGREEN**  
AT THE HEART ♥ OF YOUR MOVE

## Salterford Road, Tooting, London, SW17

- ♥ 2 Double bedrooms
- ♥ Large living room
- ♥ Unfurnished
- ♥ Stripped wood floors
- ♥ Period features
- ♥ Dining Room

A delightful and spacious two bedroom garden flat well located for transport with both Tooting Mainline and Tooting Broadway Stations within walking distance. This well proportioned character ground floor maisonette comprises a spacious living room, good size master bedroom, a second double bedroom, dining room, fitted kitchen and bathroom with modern suite. Further benefits include wooden floors in the principal rooms, private rear garden and private entrance.

# To Let: £1,850 per month



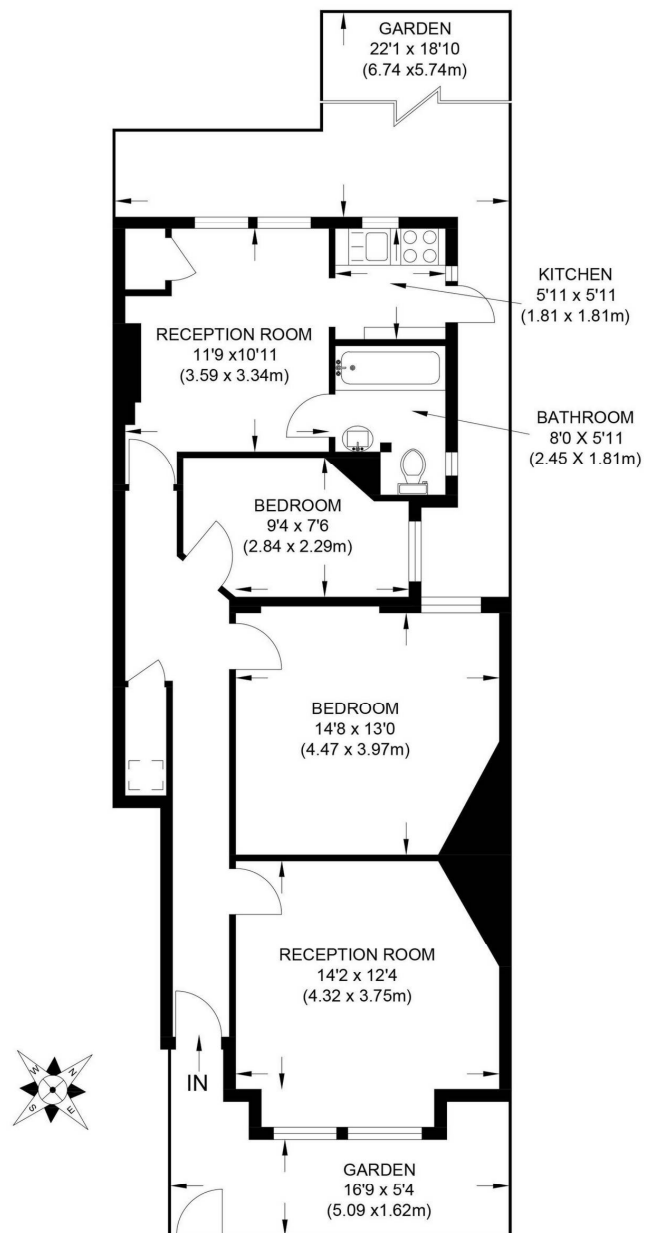
Seymour Green, 483 Merton Road, London SW18 5LE

T: 020 8870 0111 F: 020 3302 9598 E: [southfields@seymour-green.co.uk](mailto:southfields@seymour-green.co.uk) W: [seymour-green.co.uk](http://seymour-green.co.uk)



**SEYMOURGREEN**

AT THE HEART ♥ OF YOUR MOVE



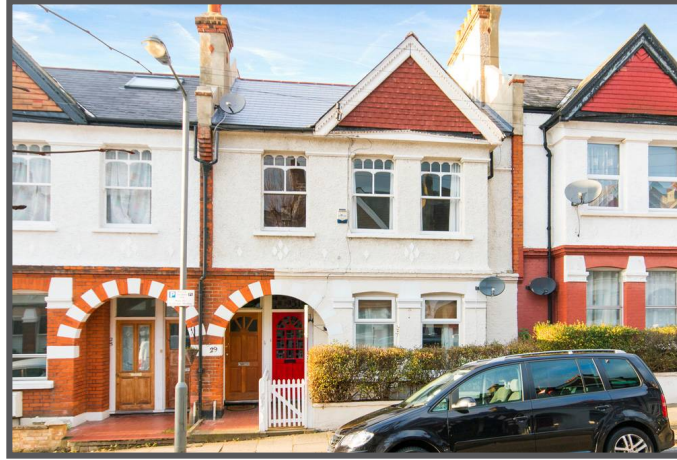
#### GROUND FLOOR

**APPROX. GROSS INTERNAL FLOOR AREA 786 SQ FT / 73 SQ M**

Illustration for identification purpose only, not to scale  
All measurements are maximum, and includes wardrobes and window bays where applicable  
Prepared by Pixangle ©. Tel 020 8870 2118

# Salterford Road, Tooting, London, SW17

## To Let: £1,850 per month

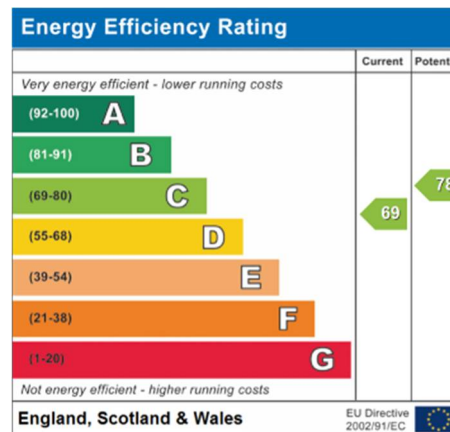
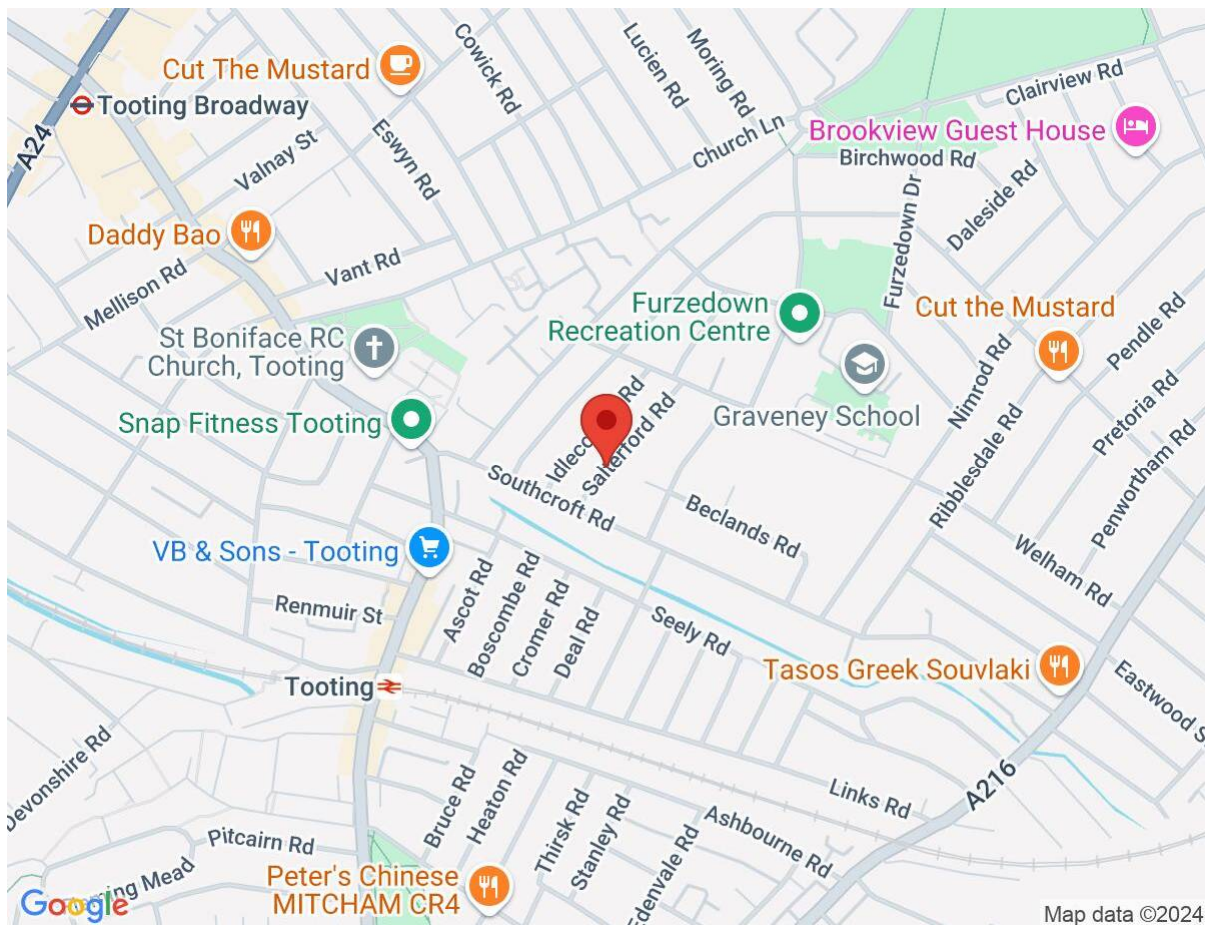


Seymour Green, 483 Merton Road, London SW18 5LE  
T: 020 8870 0111 F: 020 3302 9598 E: [southfields@seymour-green.co.uk](mailto:southfields@seymour-green.co.uk) W: [seymour-green.co.uk](http://seymour-green.co.uk)



# Salterford Road, Tooting, London, SW17

## To Let: £1,850 per month



**IMPORTANT NOTICE**  
Descriptions of the property are subjective and are used in good faith as an opinion and NOT as a statement of fact. Please make further specific enquires to ensure that our descriptions are likely to match any expectations you may have of the property. We have not tested any services, systems or appliances at this property. We strongly recommend that all the information we provide be verified by you on inspection, and by your Surveyor and Conveyancer.

Seymour Green, 483 Merton Road, London SW18 5LE  
T: 020 8870 0111 F: 020 3302 9598 E: southfields@seymour-green.co.uk W: seymour-green.co.uk