



SEYMOURGREEN
AT THE HEART ♥ OF YOUR MOVE

Earlsfield Road, Earlsfield, London, SW18

- ♥ Five Bedroom Family Home
- ♥ Many Period Features
- ♥ Earlsfield Primary School Catchment
- ♥ Excellent Order Throughout
- ♥ Double Reception Room
- ♥ Great for Transport

Presented in superb order throughout this wonderful character family home retains many period features and comprises on the ground floor a 24' double reception room, a well fitted 19'3 kitchen breakfast room and useful 23' cellar. The first floor comprises 3 generous double bedrooms and a family bathroom whilst on the top floor can be found a further double bedroom with extensive built in storage an en-suite shower room and a further large single bedroom / office/nursery. The house is in the catchment for Earlsfield Primary School being approx. 260 m from the school gate and Floreat School on Garratt Lane. The property further benefits from a 24' rear garden

To Let: £3,250 per month



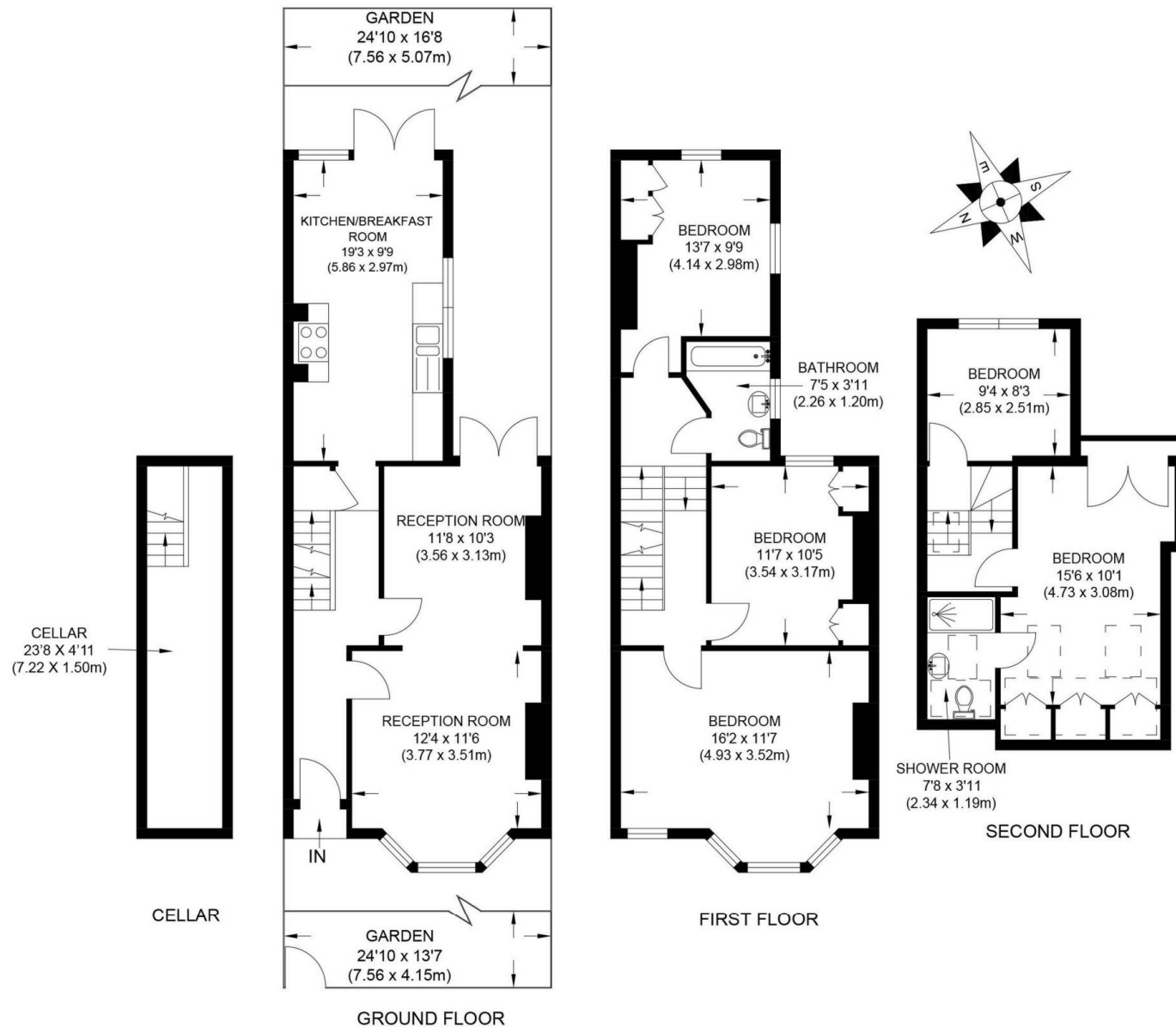
Seymour Green, 483 Merton Road, London SW18 5LE

T: 020 8870 0111 F: 020 3302 9598 E: southfields@seymour-green.co.uk W: seymour-green.co.uk



SEYMOURGREEN

AT THE HEART ♥ OF YOUR MOVE



APPROX. GROSS INTERNAL FLOOR AREA 1604 SQ FT / 149 SQ M

Illustration for identification purpose only, not to scale

All measurements are maximum, and includes wardrobes and window bays where applicable

Prepared by Pixangle ©. Tel 020 8870 2118

Earlsfield Road, Earlsfield, London, SW18

To Let: £3,250 per month



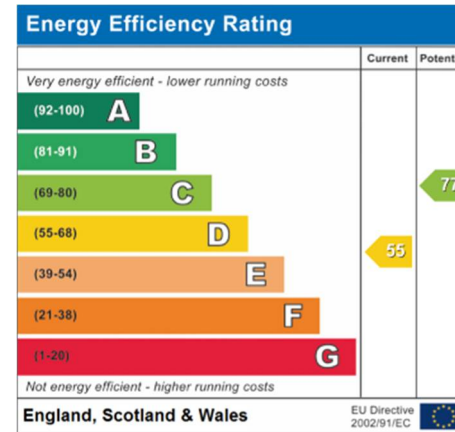
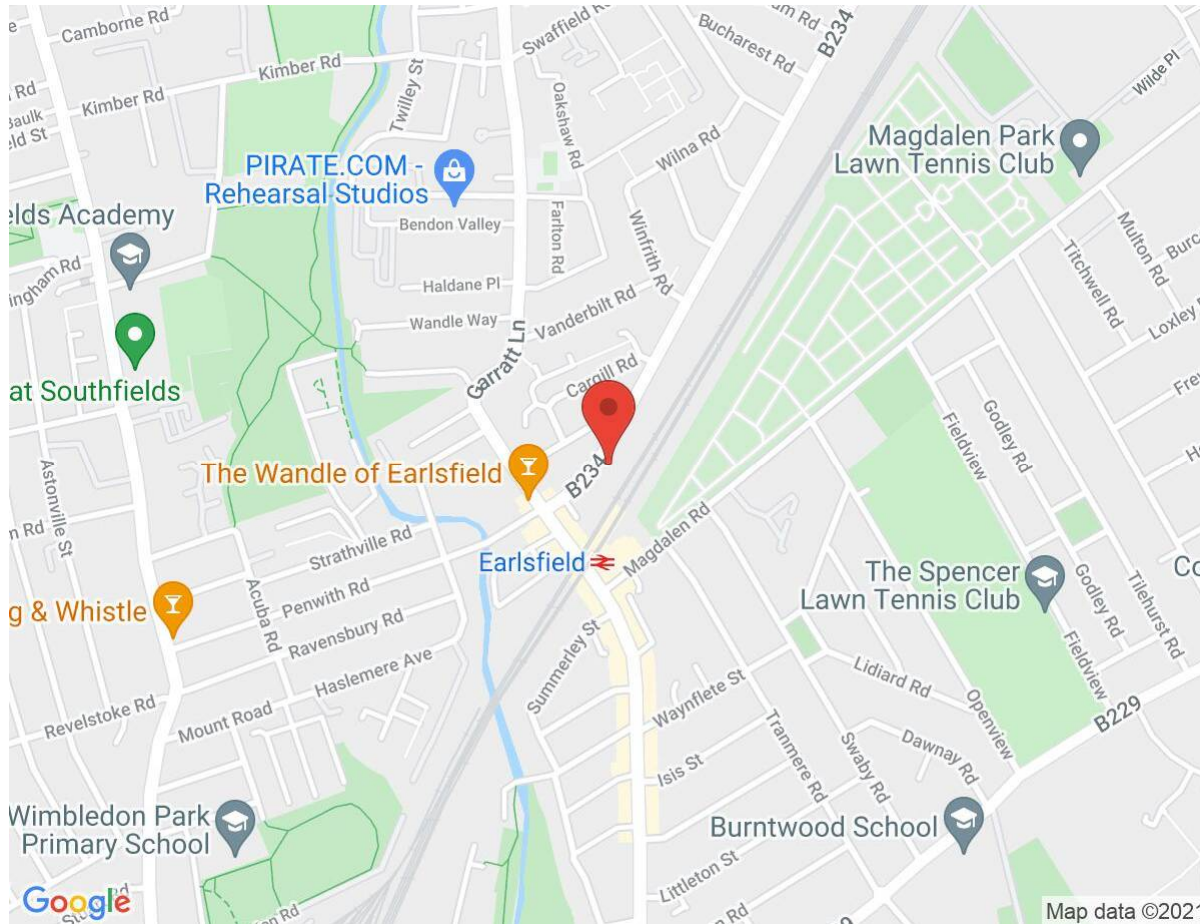


SEYMOURGREEN

AT THE HEART ♥ OF YOUR MOVE

Earlsfield Road, Earlsfield, London, SW18

To Let: £3,250 per month



IMPORTANT NOTICE
Descriptions of the property are subjective and are used in good faith as an opinion and NOT as a statement of fact. Please make further specific enquires to ensure that our descriptions are likely to match any expectations you may have of the property. We have not tested any services, systems or appliances at this property. We strongly recommend that all the information we provide be verified by you on inspection, and by your Surveyor and Conveyancer.

Seymour Green, 483 Merton Road, London SW18 5LE
T: 020 8870 0111 F: 020 3302 9598 E: southfields@seymour-green.co.uk W: seymour-green.co.uk