



SEYMOURGREEN
AT THE HEART ♥ OF YOUR MOVE

Firth Gardens, Fulham, London, SW6

- ♥ Excellent Condition Throughout
- ♥ 840 Sq Feet
- ♥ New Bathroom
- ♥ Plenty of Character
- ♥ Two Great Sized Bedrooms
- ♥ Close to Bishops Park

With accommodation over the top two floors of this period house, this very well presented apartment boasts two double bedrooms, good size living room, eat in kitchen and stylish bathroom. The apartment is well positioned for transport and local amenities with both Parsons Green and Putney Bridge Tube Stations (District Line) within a 10 minute walk and Hammersmith Broadway (Piccadilly Line) only a short bus ride away. The popular Bishops' Park and the shops and eateries of Munster Village are just a short stroll.

To Let: £2,500 per month



Seymour Green, 483 Merton Road, London SW18 5LE

T: 020 8870 0111 F: 020 3302 9598 E: southfields@seymour-green.co.uk W: seymour-green.co.uk

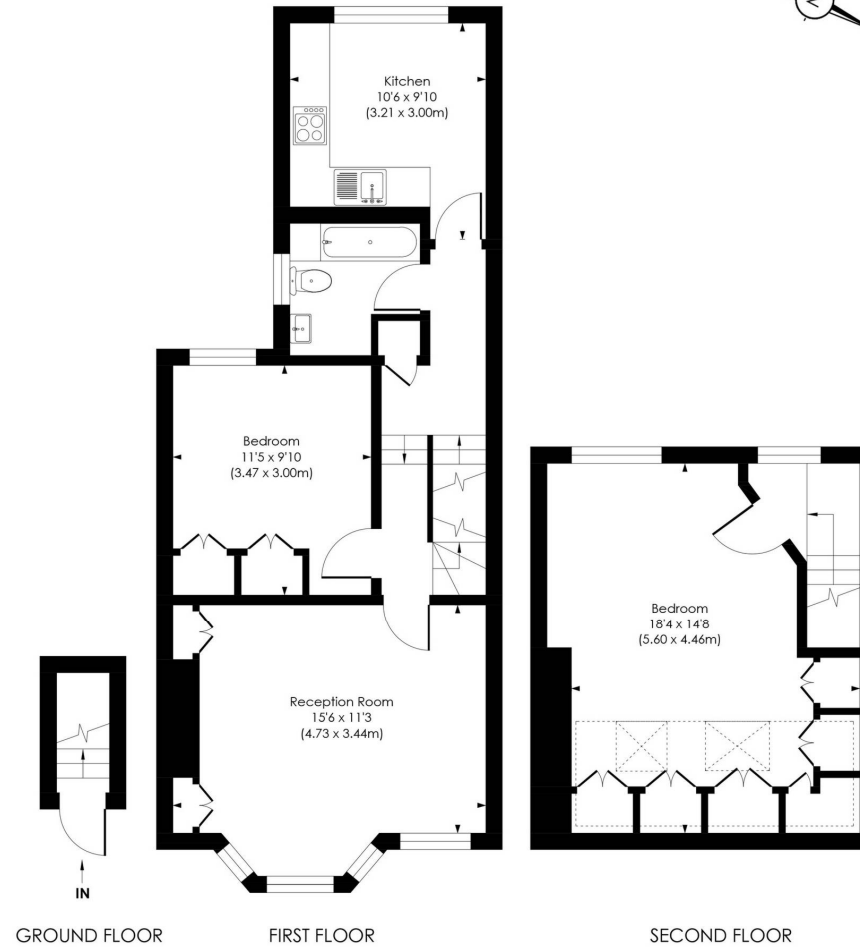


SEYMOURGREEN

AT THE HEART  OF YOUR MOVE

FIRTH GARDENS - SW6

Approx. Gross Internal Floor Area
840 Sq. ft / 78.01 Sq. m



© Pixangle Property Marketing Ltd. info @pixangle.com Tel: 0208 870 2118

pixangle
PROPERTY MARKETING

This floor plan has been prepared for the purpose of illustration only in accordance with the latest RICS code of measuring practice and is not to scale.
All measurements and areas are approximate and whilst every effort has been made to ensure the accuracy of the plan contained here, no responsibility is taken for any error, omission or misstatement.

Firth Gardens, Fulham, London, SW6

To Let: £2,500 per month



Seymour Green, 483 Merton Road, London SW18 5LE
T: 020 8870 0111 F: 020 3302 9598 E: southfields@seymour-green.co.uk W: seymour-green.co.uk

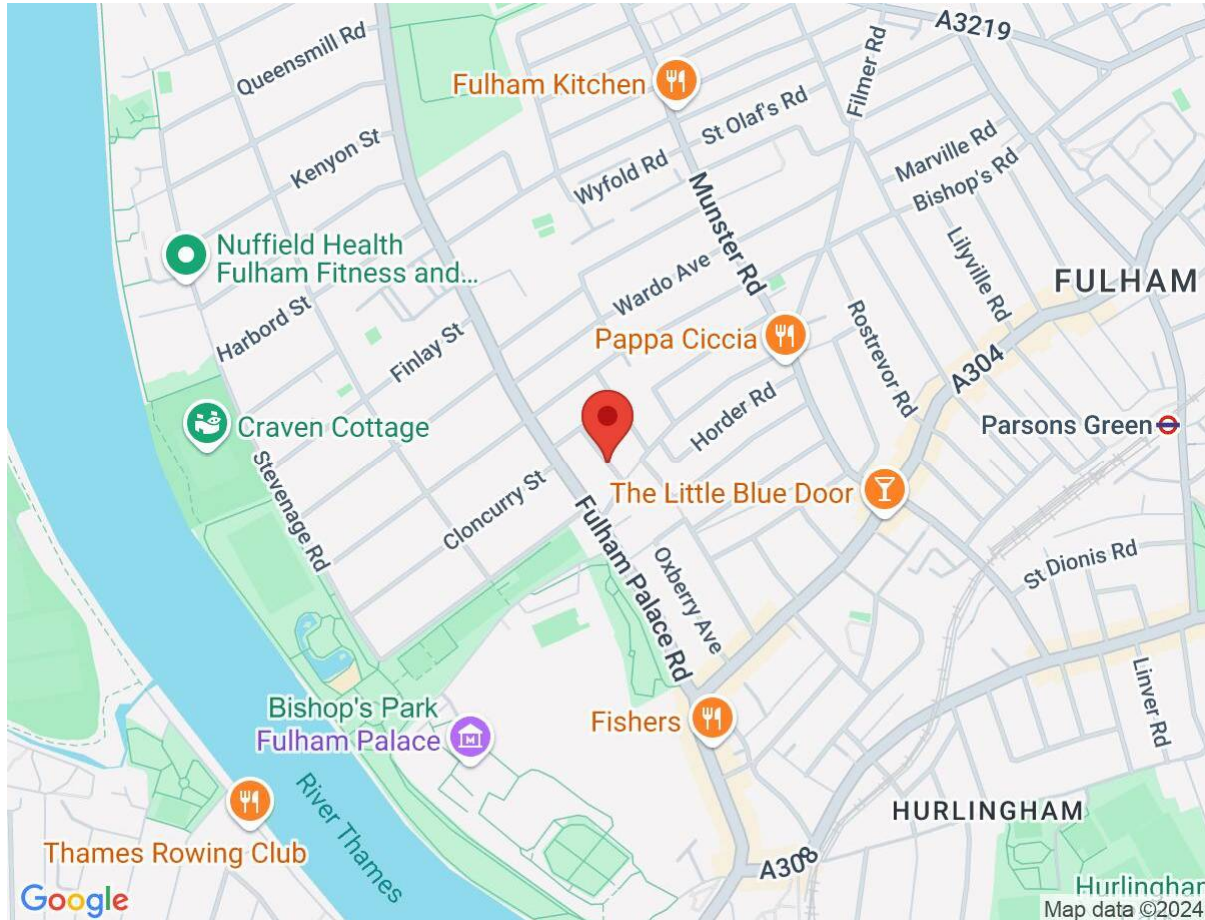


SEYMOURGREEN

AT THE HEART ♥ OF YOUR MOVE

Firth Gardens, Fulham, London, SW6

To Let: £2,500 per month



Energy Efficiency Rating		
	Current	Potential
Very energy efficient - lower running costs		
(92-100) A		
(81-91) B		
(69-80) C	69	72
(55-68) D		
(39-54) E		
(21-38) F		
(1-20) G		
Not energy efficient - higher running costs		
EU Directive 2002/91/EC		
England, Scotland & Wales		



IMPORTANT NOTICE
Descriptions of the property are subjective and are used in good faith as an opinion and NOT as a statement of fact. Please make further specific enquires to ensure that our descriptions are likely to match any expectations you may have of the property. We have not tested any services, systems or appliances at this property. We strongly recommend that all the information we provide be verified by you on inspection, and by your Surveyor and Conveyancer.

Seymour Green, 483 Merton Road, London SW18 5LE
T: 020 8870 0111 F: 020 3302 9598 E: southfields@seymour-green.co.uk W: seymour-green.co.uk