



SEYMOURGREEN
AT THE HEART ♥ OF YOUR MOVE

Merton Road, Earlsfield, London, SW18

- ♥ 17 ft Living Room
- ♥ Good Size Double Bedroom
- ♥ Fabulous Kitchen Diner
- ♥ 7-8 Minutes Earlsfield Mainline
- ♥ Private Rear Garden
- ♥ 2-3 Minutes Wimbledon Park

A very well presented first floor maisonette well located for local amenities and transport with Earlsfield Mainline a 7-8 minute walk and both Southfields and Wimbledon Park Tube Stations just half a mile away, whilst the wide open spaces of Wimbledon Park are just 2-3 minute walk and the popular Southside Shopping centre is also close by. The spacious accommodation comprises large living room, fabulous kitchen diner, double bedroom, modern bathroom with white suite and direct access to a private rear garden.

To Let: £1,525 per month

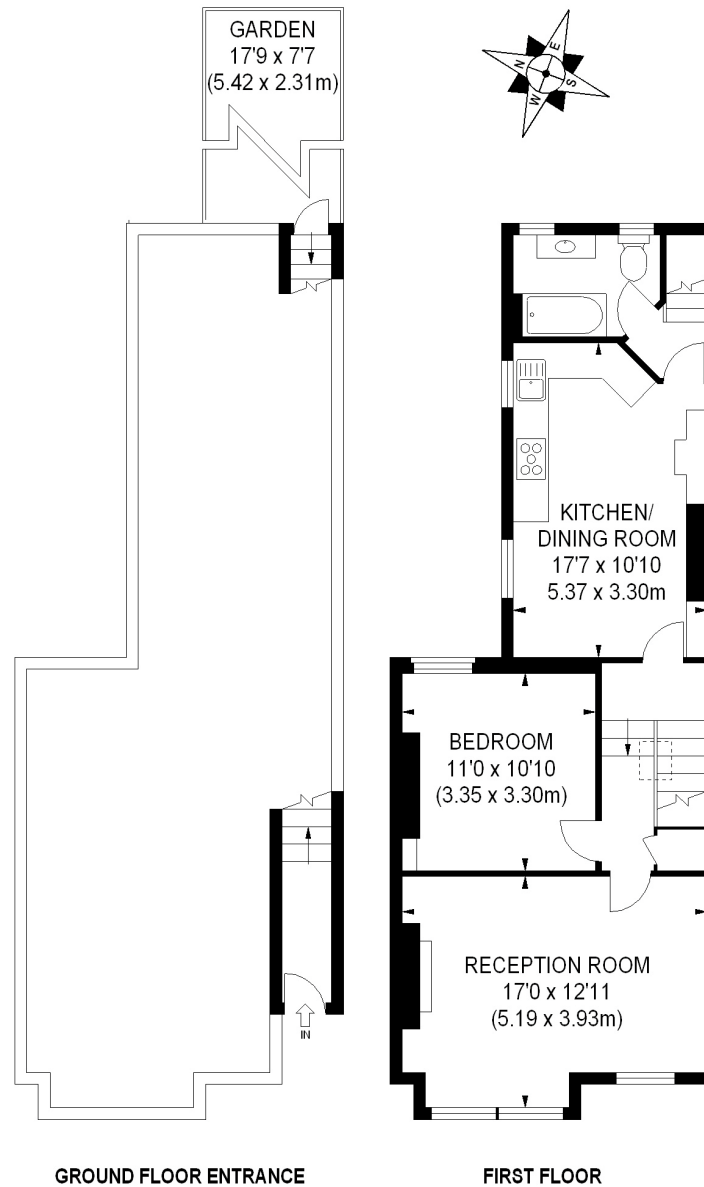


Seymour Green, 483 Merton Road, London SW18 5LE

T: 020 8870 0111 F: 020 3302 9598 E: southfields@seymour-green.co.uk W: seymour-green.co.uk



SEYMOURGREEN
AT THE HEART ♥ OF YOUR MOVE



APPROX. GROSS INTERNAL FLOOR AREA 700 SQ FT / 65 SQ M

Illustration for identification purposes only, not to scale
All measurements are maximum, and includes wardrobes and window bays where applicable
Prepared by Pixangle © . Tel 020 8870 2118



SEYMOURGREEN
AT THE HEART ♥ OF YOUR MOVE

Merton Road, Earlsfield, London, SW18 To Let: £1,525 per month



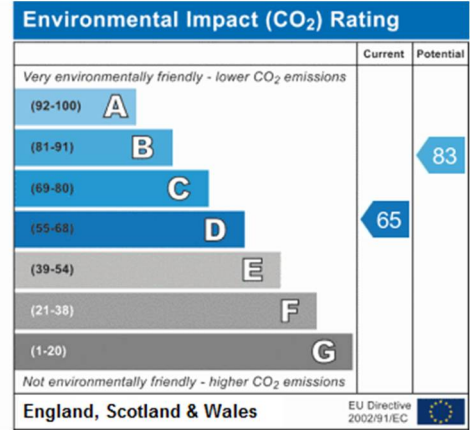
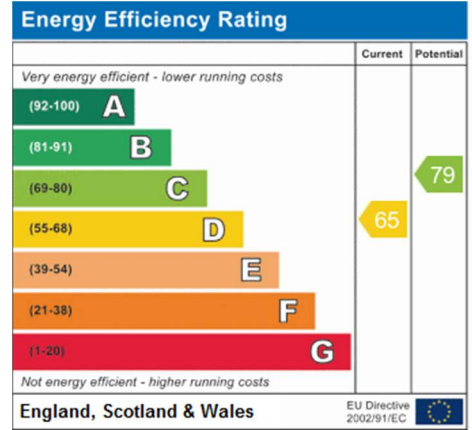
Seymour Green, 483 Merton Road, London SW18 5LE
T: 020 8870 0111 F: 020 3302 9598 E: southfields@seymour-green.co.uk W: seymour-green.co.uk



SEYMOURGREEN
AT THE HEART OF YOUR MOVE

Merton Road, Earlsfield, London, SW18

To Let: £1,525 per month



IMPORTANT NOTICE
Descriptions of the property are subjective and are used in good faith as an opinion and NOT as a statement of fact. Please make further specific enquires to ensure that our descriptions are likely to match any expectations you may have of the property. We have not tested any services, systems or appliances at this property. We strongly recommend that all the information we provide be verified by you on inspection, and by your Surveyor and Conveyancer.

Seymour Green, 483 Merton Road, London SW18 5LE
T: 020 8870 0111 F: 020 3302 9598 E: southfields@seymour-green.co.uk W: seymour-green.co.uk