



**SEYMOURGREEN**  
AT THE HEART ♥ OF YOUR MOVE

## Princes Road, East Sheen, London, SW14

- ♥ Sought After "Royals" Location
- ♥ Two Bedrooms
- ♥ 5-7 Mins Mainline Station
- ♥ Superb Open Plan Living
- ♥ Great for Schools
- ♥ Courtyard Garden

A Stunning two bedroom house located in the popular "Royals" area of East Sheen, only a 5-7 minute walk to Mortlake Mainline Station. This superb property offers accommodation over 3 floors, the ground floor having a modern open plan feel with the stylish and well fitted 11'7 kitchen opening onto the gorgeous 24'3 living room which in turn opens onto the pretty 13'6 courtyard rear garden that also provides rear access. On the first floor are two double bedrooms and the modern family bathroom whilst on the lower ground floor is a very useful study and a further shower room. The property is walking distance to East Sheen Village whilst there are some very sought after schools in the immediate vicinity including East Sheen Primary school, Thomson House school and Tower House Preparatory.

# To Let: £2,350 per month

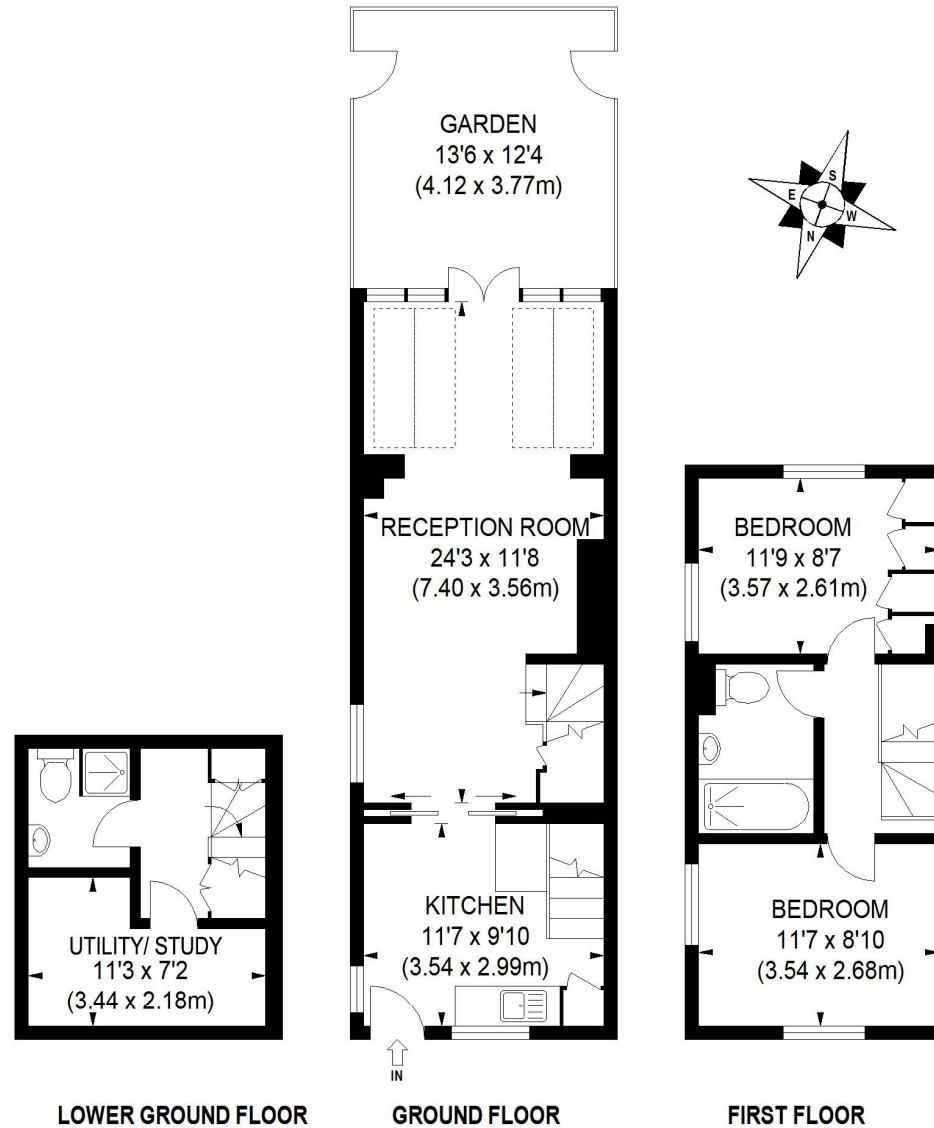


Seymour Green, 483 Merton Road, London SW18 5LE

T: 020 8870 0111 F: 020 3302 9598 E: [southfields@seymour-green.co.uk](mailto:southfields@seymour-green.co.uk) W: [seymour-green.co.uk](http://seymour-green.co.uk)



**SEYMOURGREEN**  
AT THE HEART ♥ OF YOUR MOVE



**APPROX. GROSS INTERNAL FLOOR AREA 873 SQ FT / 81.10 SQ M**

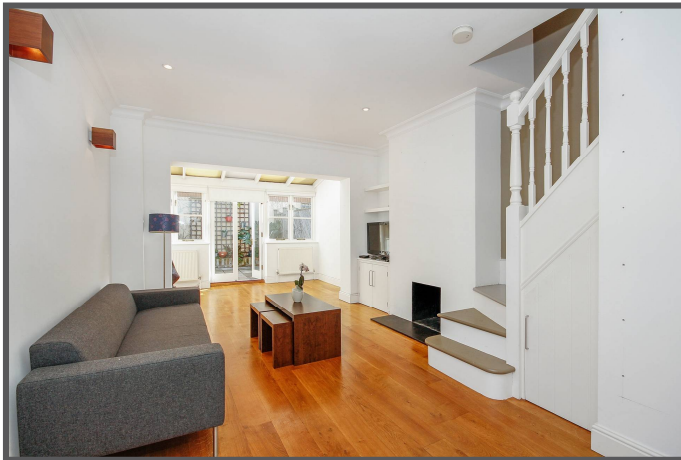
**Illustration for identification purposes only, not to scale**  
**All measurements are maximum, and includes wardrobes and window bays where applicable**  
**Prepared by Pixangle © . Tel 020 8870 2118**



SEYMOURGREEN  
AT THE HEART ♥ OF YOUR MOVE

# Princes Road, East Sheen, London, SW14

## To Let: £2,350 per month



Seymour Green, 483 Merton Road, London SW18 5LE  
T: 020 8870 0111 F: 020 3302 9598 E: [southfields@seymour-green.co.uk](mailto:southfields@seymour-green.co.uk) W: [seymour-green.co.uk](http://seymour-green.co.uk)

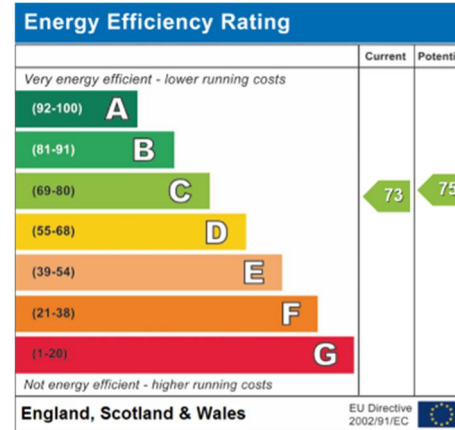
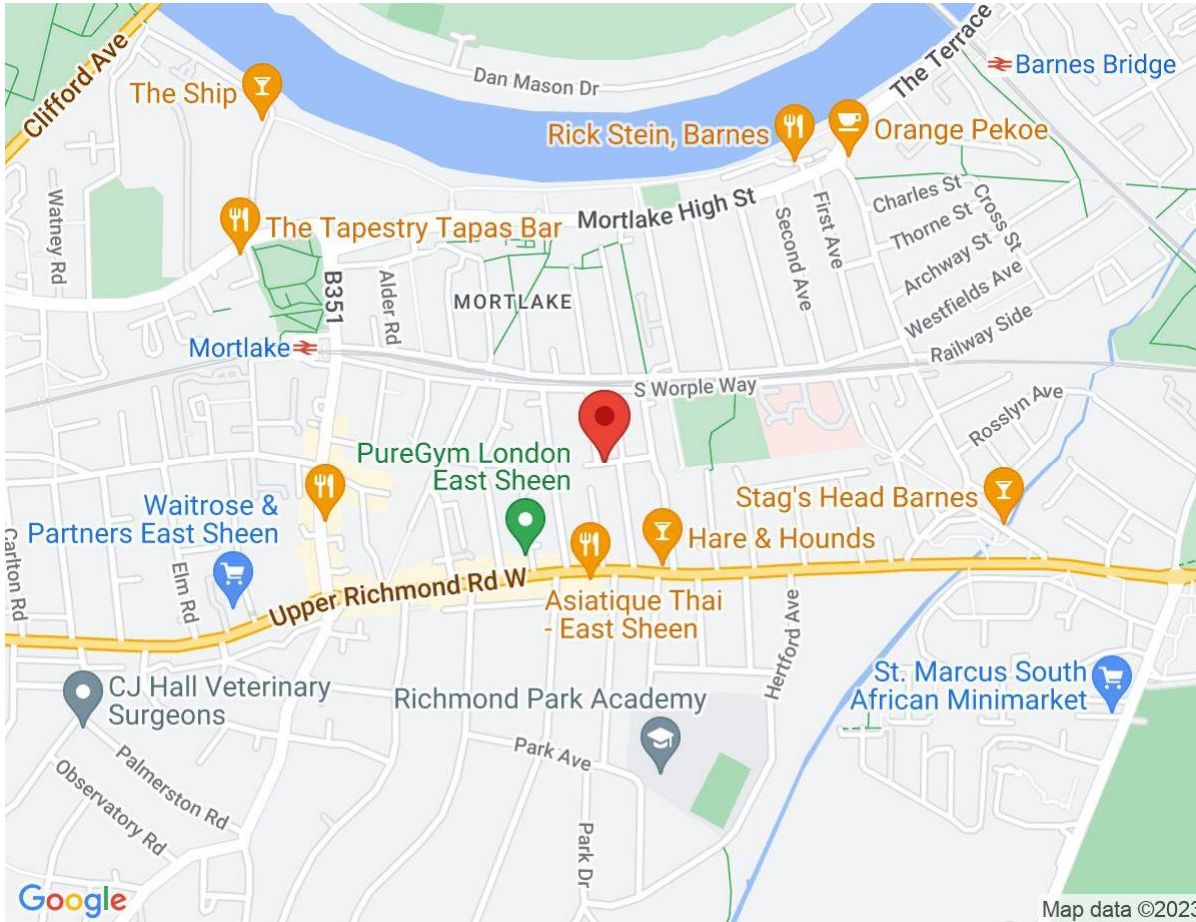




**SEYMOURGREEN**  
AT THE HEART OF YOUR MOVE

# Princes Road, East Sheen, London, SW14

## To Let: £2,350 per month



**IMPORTANT NOTICE**  
Descriptions of the property are subjective and are used in good faith as an opinion and NOT as a statement of fact. Please make further specific enquires to ensure that our descriptions are likely to match any expectations you may have of the property. We have not tested any services, systems or appliances at this property. We strongly recommend that all the information we provide be verified by you on inspection, and by your Surveyor and Conveyancer.

Seymour Green, 483 Merton Road, London SW18 5LE  
T: 020 8870 0111 F: 020 3302 9598 E: southfields@seymour-green.co.uk W: seymour-green.co.uk