



SEYMOURGREEN
AT THE HEART ♥ OF YOUR MOVE

Keswick Road, Putney, London, SW15

- ♥ Amazing Roof Top Views
- ♥ Stunning Open Plan Living
- ♥ Immaculate Penthouse Flat
- ♥ 1 Minute to East Putney Tube
- ♥ 6th Floor with Lift
- ♥ Large Roof Terrace

A wonderful penthouse flat with amazing views, fabulous roof terrace and only 1 minute to East Putney Tube Station.

To Let: £1,850 per month

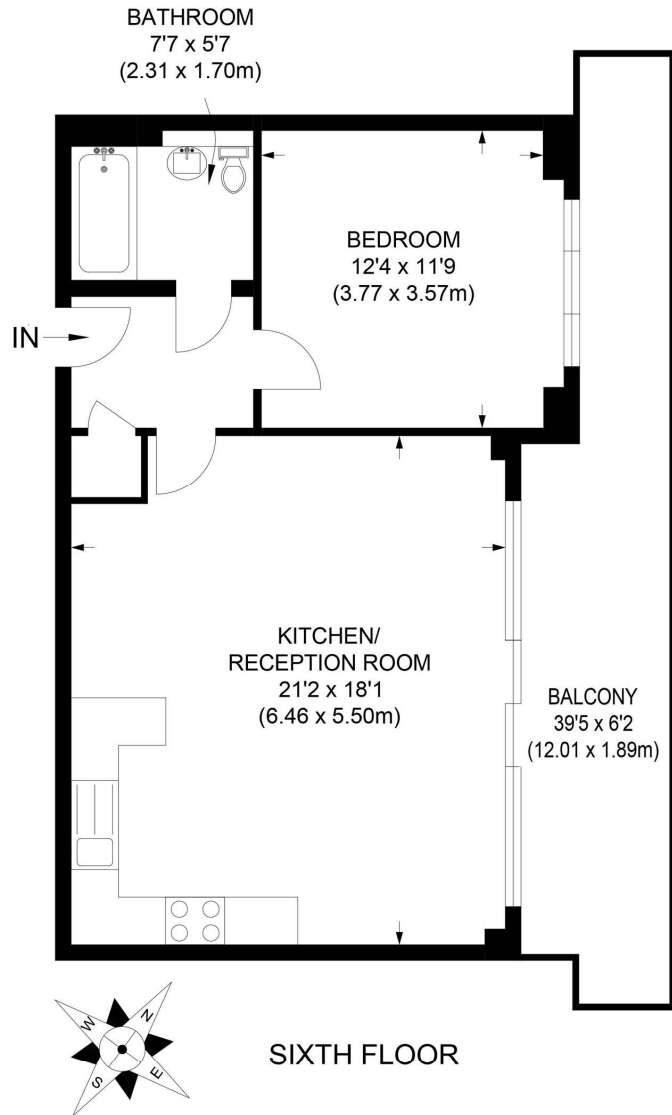


Seymour Green, 483 Merton Road, London SW18 5LE

T: 020 8870 0111 F: 020 3302 9598 E: southfields@seymour-green.co.uk W: seymour-green.co.uk



SEYMOURGREEN
AT THE HEART ♥ OF YOUR MOVE



APPROX. GROSS INTERNAL FLOOR AREA 641 SQ FT / 59.6 SQ M

Illustration for identification purpose only, not to scale
All measurements are maximum, and includes wardrobes and window bays where applicable
Prepared by Pixangle ©. Tel 020 8870 2118



SEYMOURGREEN
AT THE HEART ♥ OF YOUR MOVE

Keswick Road, Putney, London, SW15

To Let: £1,850 per month



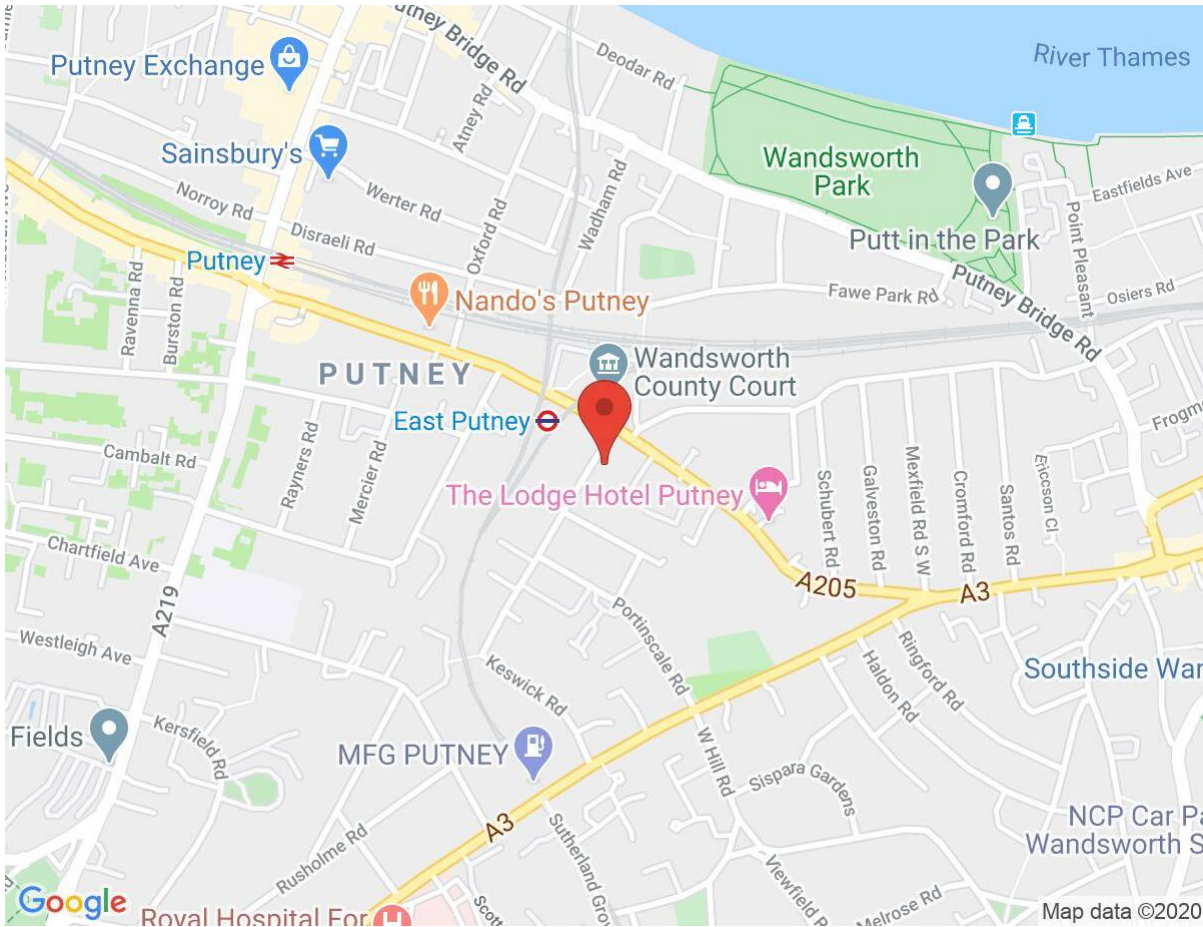
Seymour Green, 483 Merton Road, London SW18 5LE
T: 020 8870 0111 F: 020 3302 9598 E: southfields@seymour-green.co.uk W: seymour-green.co.uk



SEYMOURGREEN
AT THE HEART OF YOUR MOVE

Keswick Road, Putney, London, SW15

To Let: £1,850 per month



Energy Efficiency Rating		
	Current	Potential
Very energy efficient - lower running costs		
(92-100) A		
(81-91) B		
(69-80) C		
(55-68) D		
(39-54) E		
(21-38) F		
(1-20) G		
Not energy efficient - higher running costs		
	70	70
EU Directive 2002/91/EC		

Environmental Impact (CO ₂) Rating		
	Current	Potential
Very environmentally friendly - lower CO ₂ emissions		
(92-100) A		
(81-91) B		
(69-80) C		
(55-68) D		
(39-54) E		
(21-38) F		
(1-20) G		
Not environmentally friendly - higher CO ₂ emissions		
	78	78
EU Directive 2002/91/EC		



IMPORTANT NOTICE
Descriptions of the property are subjective and are used in good faith as an opinion and NOT as a statement of fact. Please make further specific enquires to ensure that our descriptions are likely to match any expectations you may have of the property. We have not tested any services, systems or appliances at this property. We strongly recommend that all the information we provide be verified by you on inspection, and by your Surveyor and Conveyancer.

Seymour Green, 483 Merton Road, London SW18 5LE
T: 020 8870 0111 F: 020 3302 9598 E: southfields@seymour-green.co.uk W: seymour-green.co.uk