



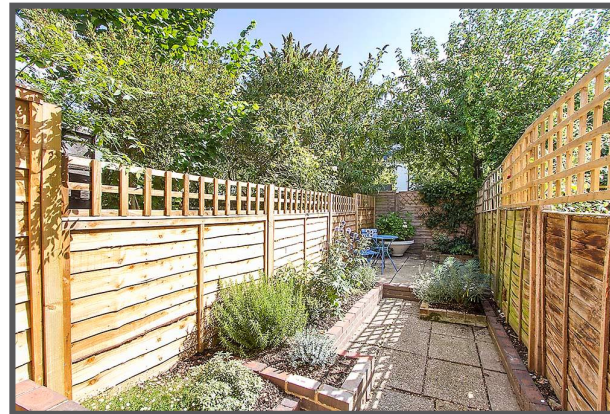
SEYMOURGREEN
AT THE HEART ♥ OF YOUR MOVE

Heythorp Street, Southfields, London, SW18

- ♥ Spacious Maisonette
- ♥ Modern Fitted Kitchen
- ♥ Three Bedrooms
- ♥ Generous Bathroom
- ♥ Private Rear Garden
- ♥ 3-4 Minutes Southfields Tube Station

A spacious 3 double bedroom maisonette superbly located on the popular Southfields Grid just a few minutes from the tube station along with an excellent selection of shops and restaurants. This spacious and well presented property has accommodation over two floors comprising of three double bedrooms, large living room, well fitted kitchen and modern bathroom with white suite. The property also benefits from a delightful private rear garden and comes unfurnished.

To Let: £2,500 per month

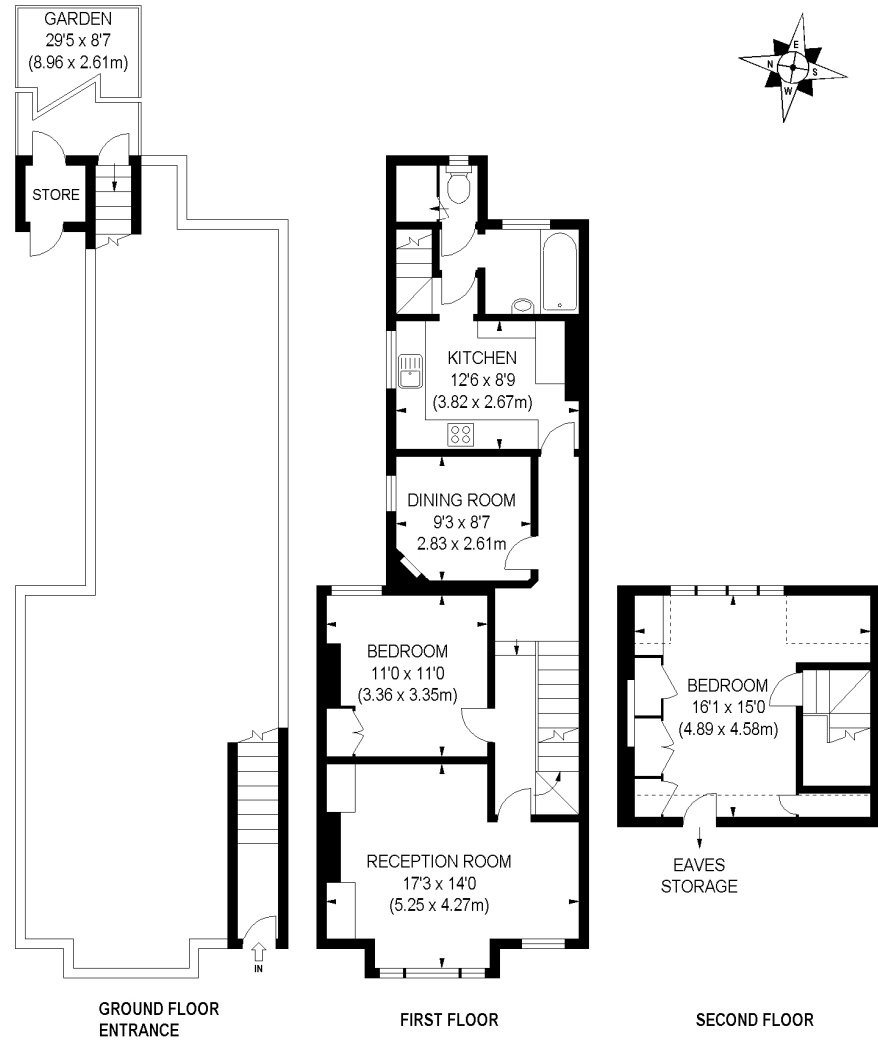


Seymour Green, 483 Merton Road, London SW18 5LE

T: 020 8870 0111 F: 020 3302 9598 E: southfields@seymour-green.co.uk W: seymour-green.co.uk



SEYMOURGREEN
AT THE HEART ♥ OF YOUR MOVE



APPROX. GROSS INTERNAL FLOOR AREA 1052 SQ FT / 97.73 SQ M

Illustration for identification purposes only, not to scale
All measurements are maximum, and includes wardrobes and window bays where applicable
Prepared by Pixangle © . Tel 020 8870 2118



SEYMOURGREEN
AT THE HEART ♥ OF YOUR MOVE

Heythorp Street, Southfields, London, SW18

To Let: £2,500 per month

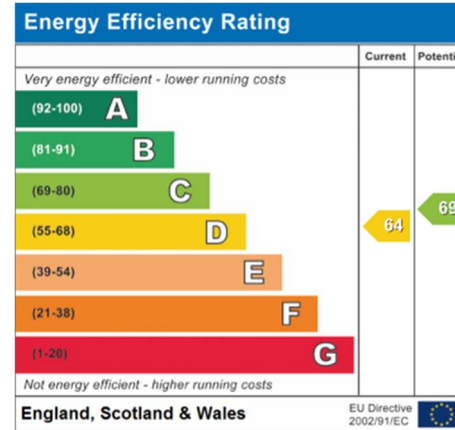
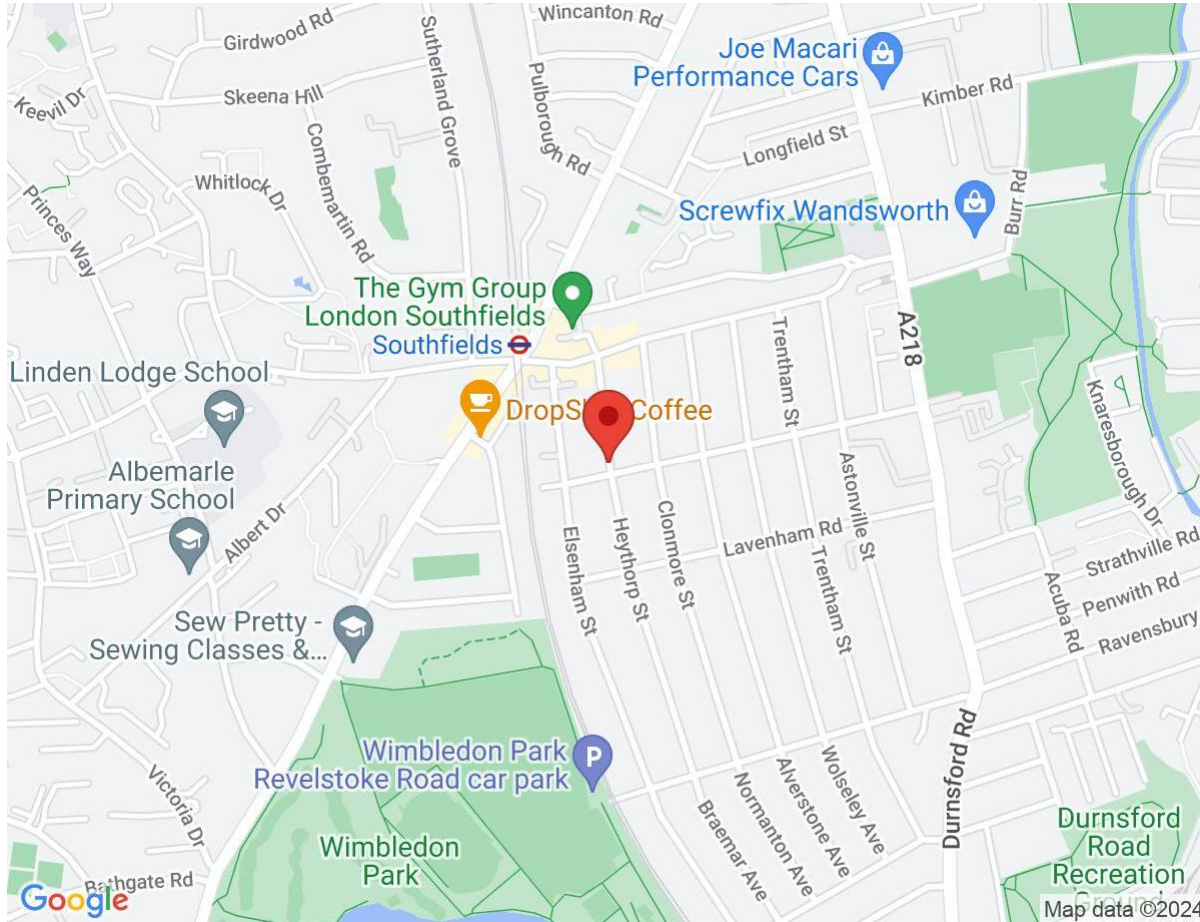


Seymour Green, 483 Merton Road, London SW18 5LE
T: 020 8870 0111 F: 020 3302 9598 E: southfields@seymour-green.co.uk W: seymour-green.co.uk



SEYMOURGREEN
AT THE HEART OF YOUR MOVE

Heythorp Street, Southfields, London, SW18 To Let: £2,500 per month



IMPORTANT NOTICE
Descriptions of the property are subjective and are used in good faith as an opinion and NOT as a statement of fact. Please make further specific enquires to ensure that our descriptions are likely to match any expectations you may have of the property. We have not tested any services, systems or appliances at this property. We strongly recommend that all the information we provide be verified by you on inspection, and by your Surveyor and Conveyancer.

Seymour Green, 483 Merton Road, London SW18 5LE
T: 020 8870 0111 F: 020 3302 9598 E: southfields@seymour-green.co.uk W: seymour-green.co.uk