



SEYMOURGREEN
AT THE HEART ♥ OF YOUR MOVE

Revelstoke Road, Wimbledon Park, London, SW18

- ♥ 5 Minute's to Wimbledon Park Tube
- ♥ 200m from The Park
- ♥ Excellent Condition
- ♥ Large Living Room
- ♥ Two Double Bedrooms
- ♥ Furnished

SPACIOUS TWO DOUBLE BEDROOM first floor flat, perfectly located for WIMBLEDON PARK TUBE STATION and the wide open spaces of the park itself which are just 200m away. The flat is in excellent condition with large living room along modern kitchen and bathroom and shared rear garden.

To Let: £1,650 per month

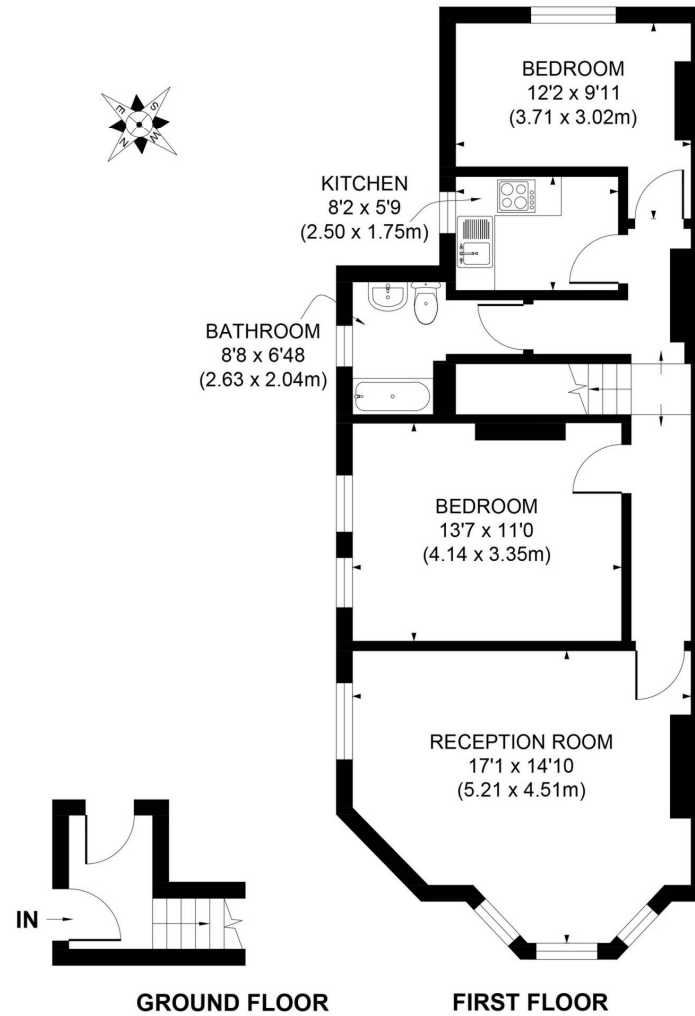


Seymour Green, 483 Merton Road, London SW18 5LE

T: 020 8870 0111 F: 020 3302 9598 E: southfields@seymour-green.co.uk W: seymour-green.co.uk



SEYMOURGREEN
AT THE HEART ♥ OF YOUR MOVE



APPROX. GROSS INTERNAL FLOOR AREA 719 SQ. FT / 66.79 SQ. M

Illustration for identification purpose only, not to scale
All measurements are maximum, and includes wardrobes and window bays where applicable
Prepared by Pixangle ©. Tel 020 8870 2118



SEYMOURGREEN
AT THE HEART ♥ OF YOUR MOVE

Revelstoke Road, Wimbledon Park, London, SW18 To Let: £1,650 per month

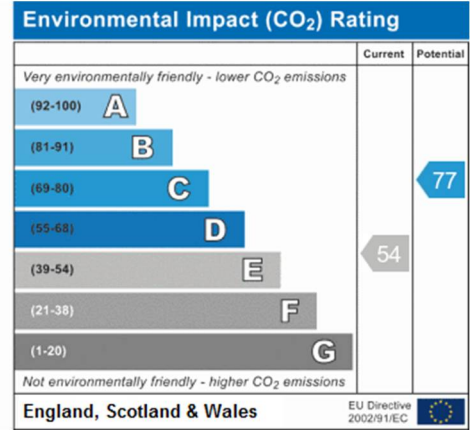
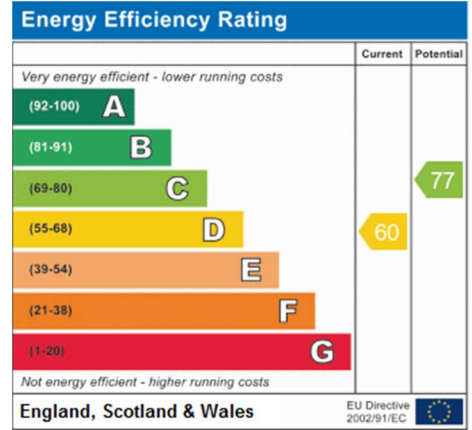


Seymour Green, 483 Merton Road, London SW18 5LE
T: 020 8870 0111 F: 020 3302 9598 E: southfields@seymour-green.co.uk W: seymour-green.co.uk



SEYMOURGREEN
AT THE HEART OF YOUR MOVE

Revelstoke Road, Wimbledon Park, London, SW18 To Let: £1,650 per month



IMPORTANT NOTICE
Descriptions of the property are subjective and are used in good faith as an opinion and NOT as a statement of fact. Please make further specific enquires to ensure that our descriptions are likely to match any expectations you may have of the property. We have not tested any services, systems or appliances at this property. We strongly recommend that all the information we provide be verified by you on inspection, and by your Surveyor and Conveyancer.

Seymour Green, 483 Merton Road, London SW18 5LE
T: 020 8870 0111 F: 020 3302 9598 E: southfields@seymour-green.co.uk W: seymour-green.co.uk