



**SEYMOURGREEN**  
AT THE HEART ♥ OF YOUR MOVE

## Point Pleasant, Putney, London, SW18

- ♥ Two Double Bedrooms
- ♥ Two Bathrooms
- ♥ West Facing Balcony
- ♥ Well Fitted Kitchen
- ♥ Spacious Open Plan Living Room
- ♥ Secure Parking

SHORT TERM LET ONLY An OUTSTANDING third floor flat situated just moments from the River Thames, in excellent condition comprising a spacious open plan living room and kitchen which opens onto a west facing terrace, two double bedrooms and two bathrooms (one en-suite). The flat comes with an allocated underground secure parking space and is furnished.

# To Let: £2,750 per month

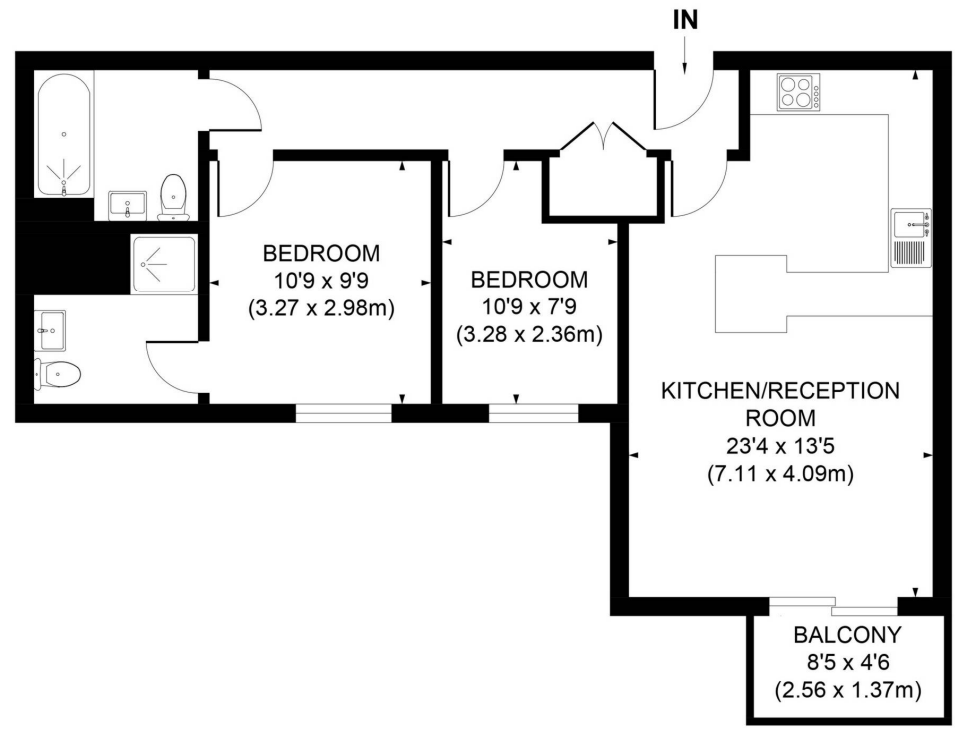


Seymour Green, 483 Merton Road, London SW18 5LE

T: 020 8870 0111 F: 020 3302 9598 E: [southfields@seymour-green.co.uk](mailto:southfields@seymour-green.co.uk) W: [seymour-green.co.uk](http://seymour-green.co.uk)



**SEYMOURGREEN**  
AT THE HEART ♥ OF YOUR MOVE



**THIRD FLOOR**

**APPROX. GROSS INTERNAL FLOOR AREA 701 SQ. FT/65.08 SQ. M**

Illustration for identification purpose only, not to scale  
All measurements are maximum, and includes wardrobes and window bays where applicable  
Prepared by Pixangle ©. Tel 020 8870 2118



**SEYMOURGREEN**  
AT THE HEART ♥ OF YOUR MOVE

# Point Pleasant, Putney, London, SW18

## To Let: £2,750 per month



Seymour Green, 483 Merton Road, London SW18 5LE  
T: 020 8870 0111 F: 020 3302 9598 E: [southfields@seymour-green.co.uk](mailto:southfields@seymour-green.co.uk) W: [seymour-green.co.uk](http://seymour-green.co.uk)





**SEYMOURGREEN**  
AT THE HEART ♥ OF YOUR MOVE

# Point Pleasant, Putney, London, SW18

## To Let: £2,750 per month



Energy Efficiency Rating		Current	Potential
Very energy efficient - lower running costs			
(92-100)	<b>A</b>		
(81-91)	<b>B</b>		
(69-80)	<b>C</b>	75	76
(55-68)	<b>D</b>		
(39-54)	<b>E</b>		
(21-38)	<b>F</b>		
(1-20)	<b>G</b>		
Not energy efficient - higher running costs			
England, Scotland & Wales		EU Directive 2002/91/EC	



**IMPORTANT NOTICE**  
Descriptions of the property are subjective and are used in good faith as an opinion and NOT as a statement of fact. Please make further specific enquires to ensure that our descriptions are likely to match any expectations you may have of the property. We have not tested any services, systems or appliances at this property. We strongly recommend that all the information we provide be verified by you on inspection, and by your Surveyor and Conveyancer.

Seymour Green, 483 Merton Road, London SW18 5LE  
T: 020 8870 0111 F: 020 3302 9598 E: southfields@seymour-green.co.uk W: seymour-green.co.uk