



**SEYMOURGREEN**

AT THE HEART ♥ OF YOUR MOVE

## Revelstoke Road, Wimbledon Park, London, SW18

- ♥ Spacious Maisonette
- ♥ Wimbledon Park Close By
- ♥ Four Bedrooms
- ♥ Two Bathrooms
- ♥ Great for Transport
- ♥ Eat in Kitchen

A FABULOUS extremely spacious maisonette with THREE DOUBLE BEDROOMS and ONE SINGLE BEDROOM, TWO BATHROOMS, wonderful living room and EAT IN KITCHEN. With PRIVATE ENTRANCE, direct access to a PRIVATE REAR GARDEN, great transport options, sought after local schools and the wide open spaces of WIMBLEDON PARK at the end of the road this property would suit a young family or sharers alike.

# To Let: £2,500 per month



Seymour Green, 483 Merton Road, London SW18 5LE

T: 020 8870 0111 F: 020 3302 9598 E: [southfields@seymour-green.co.uk](mailto:southfields@seymour-green.co.uk) W: [seymour-green.co.uk](http://seymour-green.co.uk)



**SEYMOURGREEN**

AT THE HEART ♥ OF YOUR MOVE

## REVELSTOKE ROAD, SW18

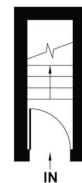
Approx. Gross Internal Floor Area

**1478 Sq. ft/137.31 Sq. m**

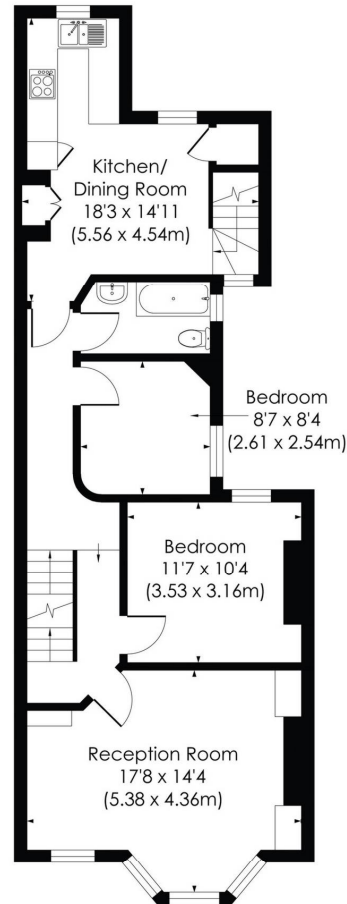
(Including Eaves)



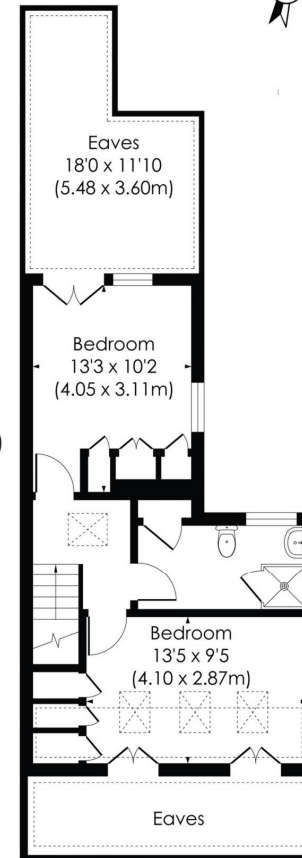
Garden  
27'5 x 6'4  
(8.35 x 1.94m)



GROUND FLOOR



FIRST FLOOR



SECOND FLOOR

**pixangle**  
PROPERTY MARKETING

This floor plan has been prepared for the purpose of illustration only in accordance with the latest RICS code of measuring practice and is not to scale. All measurements and areas are approximate and whilst every effort has been made to ensure the accuracy of the plan contained here, no responsibility is taken for any error, omission or misstatement.

© Pixangle Property Marketing Ltd. info@pixangle.com Tel: 0208 870 2118



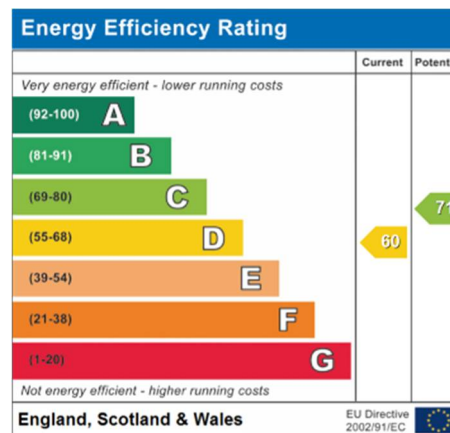
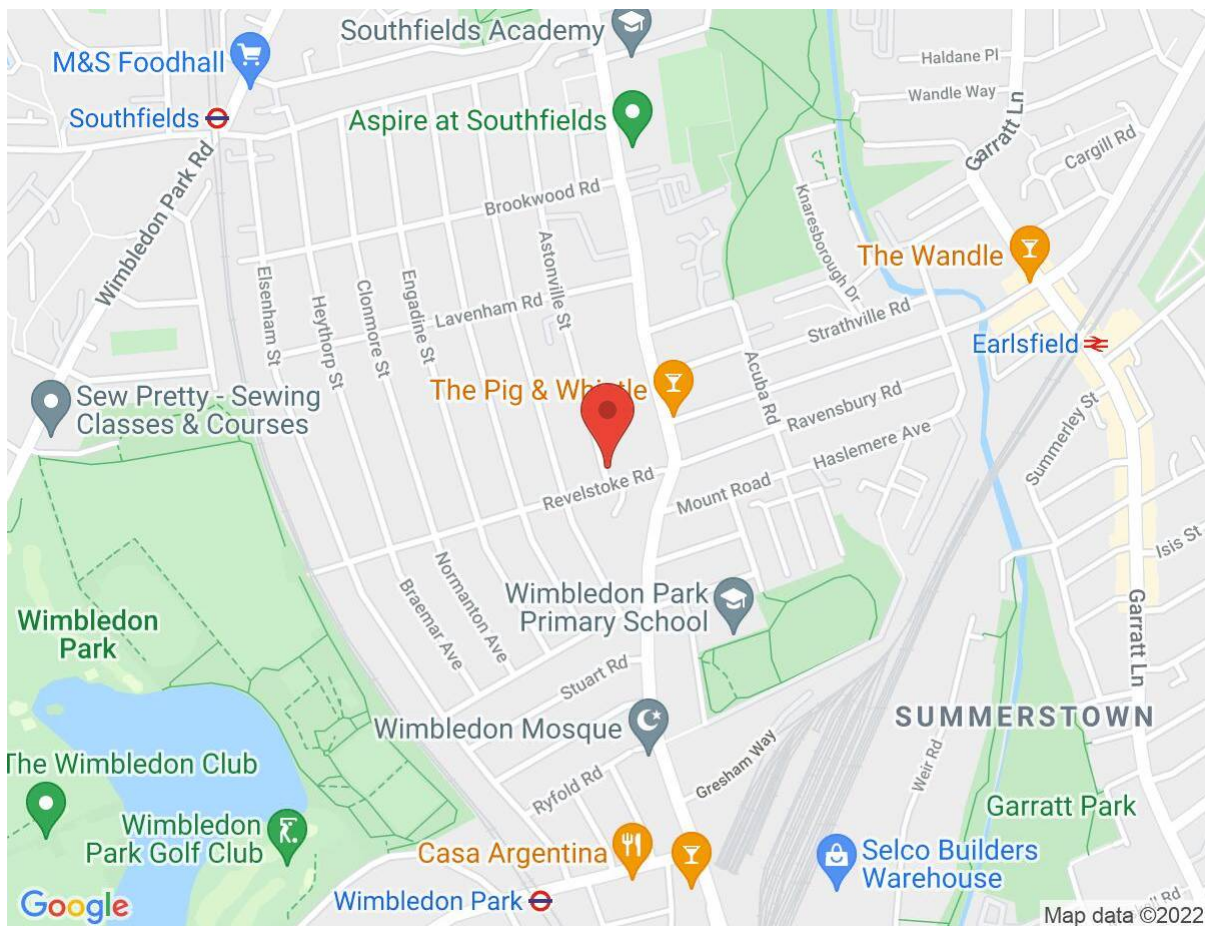
# Revelstoke Road, Wimbledon Park, London, SW18

## To Let: £2,500 per month



# Revelstoke Road, Wimbledon Park, London, SW18

## To Let: £2,500 per month



**IMPORTANT NOTICE**  
Descriptions of the property are subjective and are used in good faith as an opinion and NOT as a statement of fact. Please make further specific enquires to ensure that our descriptions are likely to match any expectations you may have of the property. We have not tested any services, systems or appliances at this property. We strongly recommend that all the information we provide be verified by you on inspection, and by your Surveyor and Conveyancer.

Seymour Green, 483 Merton Road, London SW18 5LE  
T: 020 8870 0111 F: 020 3302 9598 E: southfields@seymour-green.co.uk W: seymour-green.co.uk