



SEYMOURGREEN

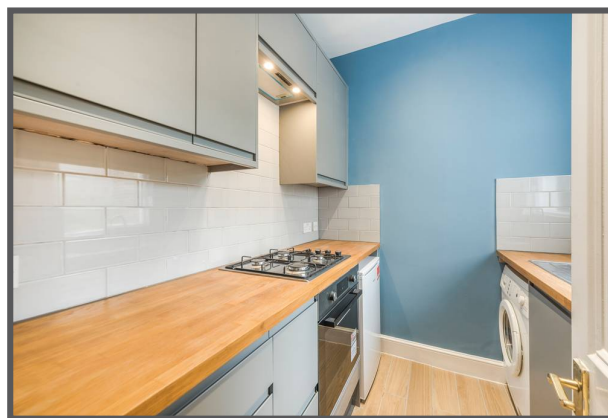
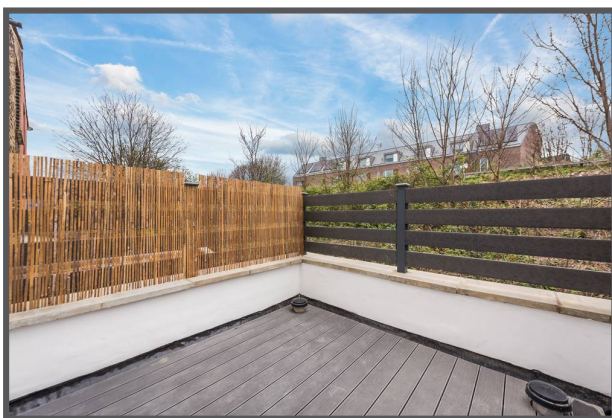
AT THE HEART ♥ OF YOUR MOVE

Summerley Street, Earlsfield, London, SW18

- ♥ Fantastic Location
- ♥ Good Size Living Room
- ♥ Unfurnished
- ♥ Private Roof Terrace
- ♥ 2 Minutes to Earlsfield Station
- ♥ Double Bedroom with Built in Wardrobes

A WONDERFUL first floor flat PERFECTLY LOCATED just a couple of minutes from EARLSFIELD MAINLINE STATION and GARRATT LANE. With a spacious living room, double bedroom, modern kitchen and bathroom along with a private roof terrace this flat would make an ideal home for a professional couple looking to be in the heart of vibrant Earlsfield.

To Let: £1,800 per month



Seymour Green, 483 Merton Road, London SW18 5LE

T: 020 8870 0111 F: 020 3302 9598 E: southfields@seymour-green.co.uk W: seymour-green.co.uk



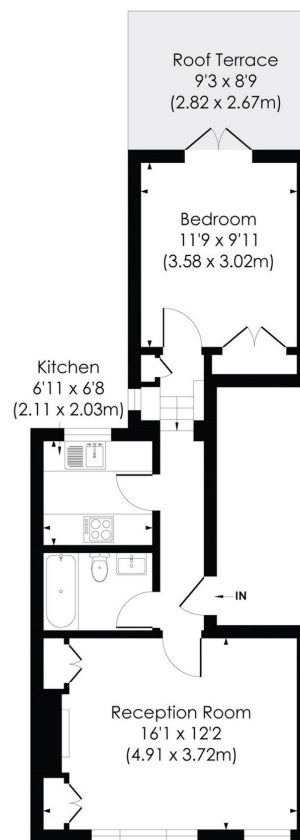
SEYMOURGREEN

AT THE HEART  OF YOUR MOVE

SUMMERLEY STREET, SW18

Approx. Gross Internal Floor Area

478 Sq. ft/44.41 Sq. m



FIRST FLOOR

© Pixangle Property Marketing Ltd. info@pixangle.com Tel: 0208 870 2118

pixangle
PROPERTY MARKETING

This floor plan has been prepared for the purpose of illustration only in accordance with the latest RICS code of measuring practice and is not to scale. All measurements and areas are approximate and whilst every effort has been made to ensure the accuracy of the plan contained here, no responsibility is taken for any error, omission or misstatement.

Summerley Street, Earlsfield, London, SW18

To Let: £1,800 per month



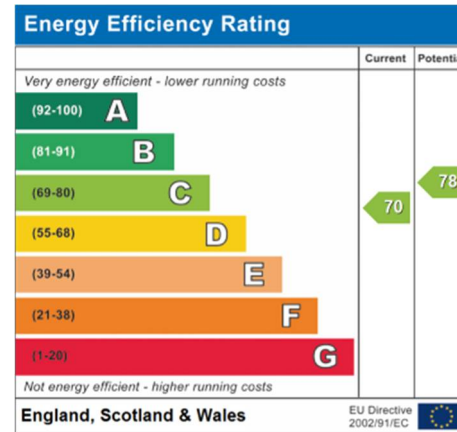
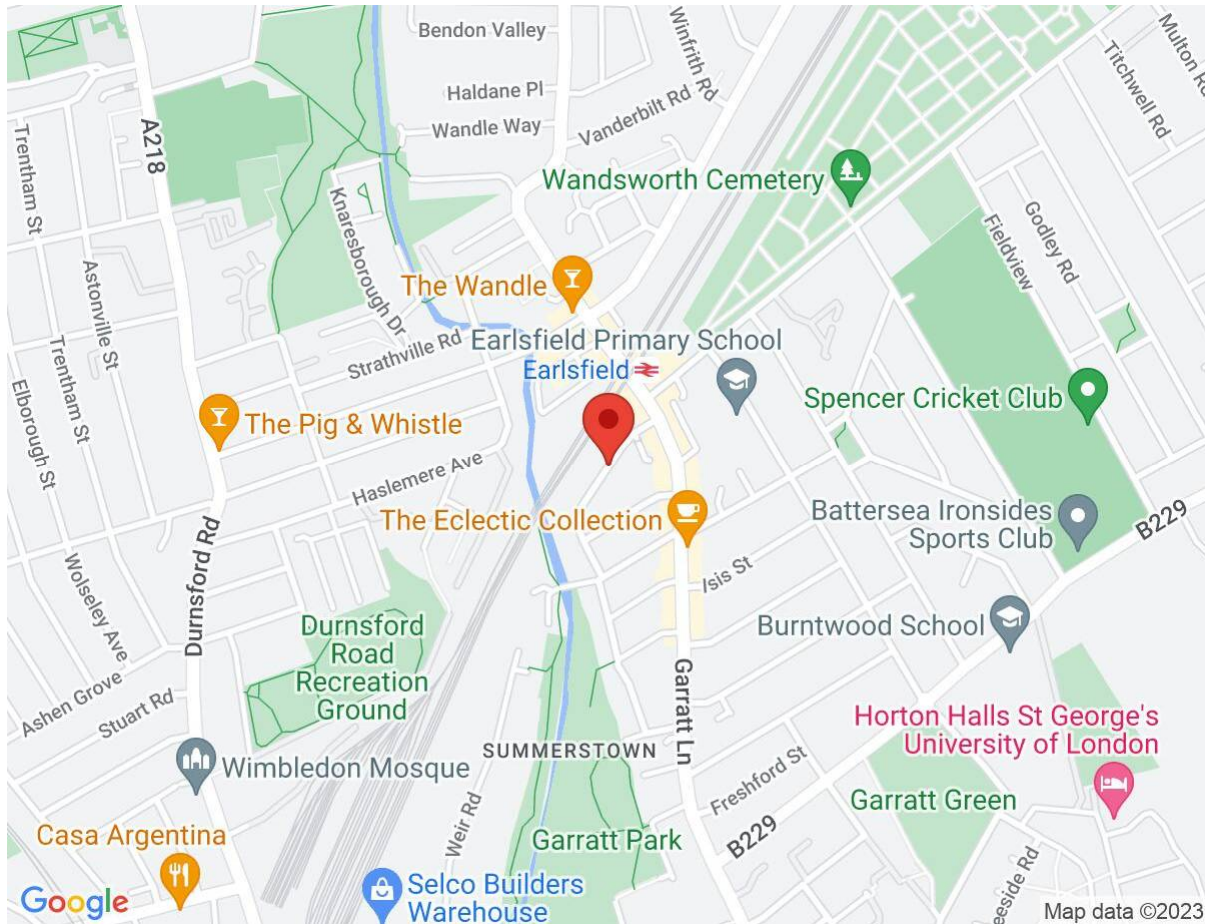


SEYMOURGREEN

AT THE HEART ♥ OF YOUR MOVE

Summerley Street, Earlsfield, London, SW18

To Let: £1,800 per month



IMPORTANT NOTICE
Descriptions of the property are subjective and are used in good faith as an opinion and NOT as a statement of fact. Please make further specific enquires to ensure that our descriptions are likely to match any expectations you may have of the property. We have not tested any services, systems or appliances at this property. We strongly recommend that all the information we provide be verified by you on inspection, and by your Surveyor and Conveyancer.

Seymour Green, 483 Merton Road, London SW18 5LE
T: 020 8870 0111 F: 020 3302 9598 E: southfields@seymour-green.co.uk W: seymour-green.co.uk