



SEYMOURGREEN

AT THE HEART ♥ OF YOUR MOVE

Merton Road, Earlsfield, London, SW18

- ♥ Two Double Bedrooms
- ♥ Excellent Storage Space
- ♥ Open Plan Living Space
- ♥ Furnished
- ♥ Well Fitted Kitchen
- ♥ Great for Transport

A charming TWO DOUBLE bedroom flat over TWO FLOORS perfectly located with EARLSFIELD MAINLINE and WIMBLEDON PARK TUBE within a few minutes walk along with the wide open spaces of WIMBLEDON PARK. The top floor open living room has lovely roof top views whilst the flat also boasts a modern bathroom and excellent storage.



To Let: £1,400 per month

Seymour Green, 483 Merton Road, London SW18 5LE

T: 020 8870 0111 F: 020 3302 9598 E: southfields@seymour-green.co.uk W: seymour-green.co.uk



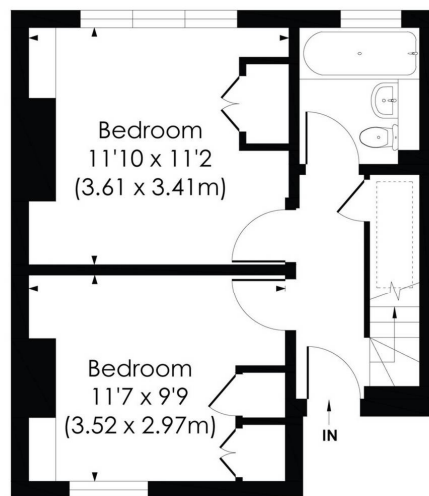
SEYMOURGREEN

AT THE HEART ♥ OF YOUR MOVE

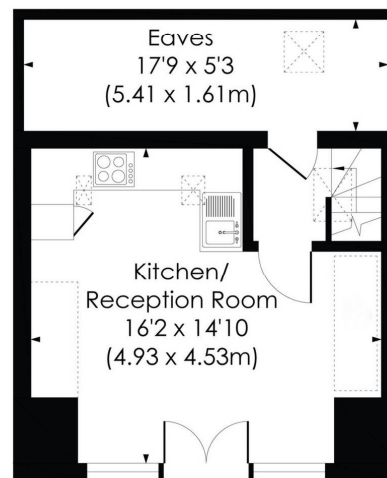
MERTON ROAD, SW18

Approx. Gross Internal Floor Area

683.29 Sq. ft/63.48 Sq. m



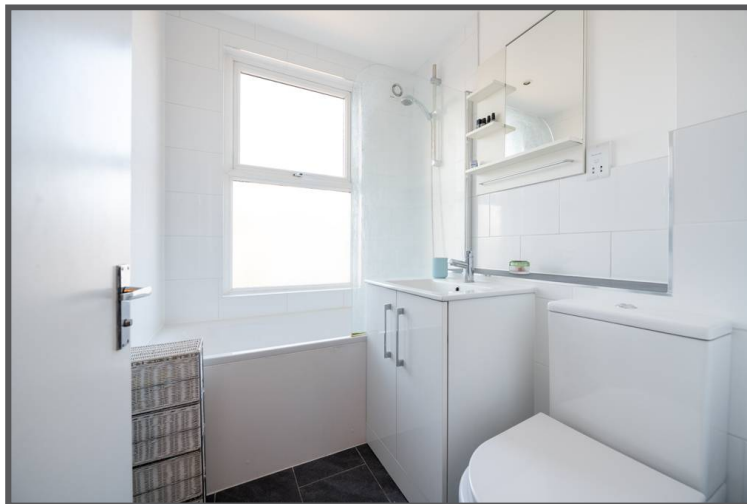
FIRST FLOOR



SECOND FLOOR

Merton Road, Earlsfield, London, SW18

To Let: £1,400 per month



Seymour Green, 483 Merton Road, London SW18 5LE
T: 020 8870 0111 F: 020 3302 9598 E: southfields@seymour-green.co.uk W: seymour-green.co.uk

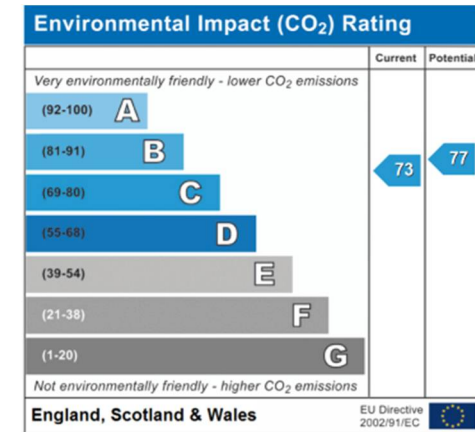
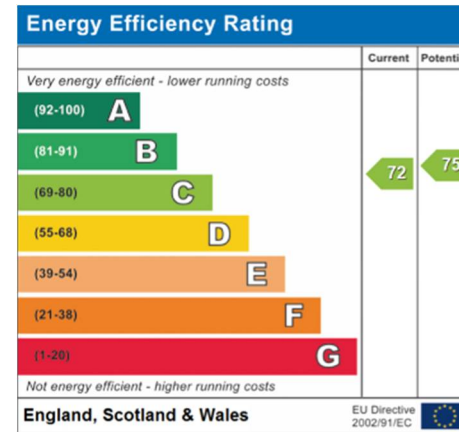
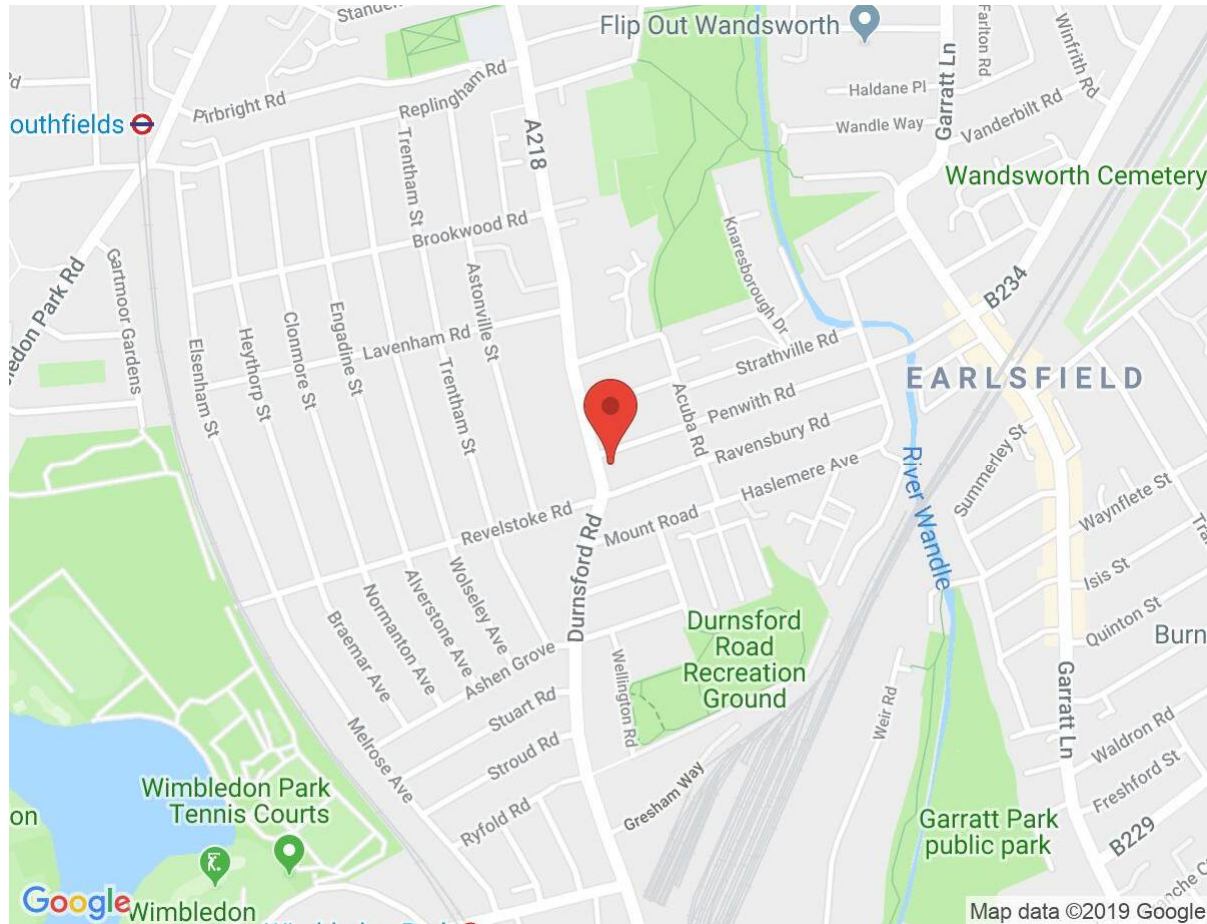


SEYMOURGREEN

AT THE HEART ♥ OF YOUR MOVE

Merton Road, Earlsfield, London, SW18

To Let: £1,400 per month



IMPORTANT NOTICE
 Descriptions of the property are subjective and are used in good faith as an opinion and NOT as a statement of fact. Please make further specific enquires to ensure that our descriptions are likely to match any expectations you may have of the property. We have not tested any services, systems or appliances at this property. We strongly recommend that all the information we provide be verified by you on inspection, and by your Surveyor and Conveyancer.

Seymour Green, 483 Merton Road, London SW18 5LE
 T: 020 8870 0111 F: 020 3302 9598 E: southfields@seymour-green.co.uk W: seymour-green.co.uk