



SEYMOURGREEN  
AT THE HEART ♥ OF YOUR MOVE

## Balvernie Grove, Southfields, London, SW18

- ♥ Stunning Kitchen Breakfast Room
- ♥ Private Rear Garden
- ♥ Newly Refurbished
- ♥ Own Entrance
- ♥ A few Minutes to Southfields Tube
- ♥ Wood Flooring Throughout

A FANTASTIC ground floor flat beautifully refurbished with Stunning Kitchen Breakfast Room, fabulous brand new Shower Room and wood flooring throughout. The property is perfectly located for SOUTHFIELDS TUBE and VILLAGE with its great selection of shops and eateries just a few minutes' walk. With PRIVATE GARDEN and own entrance and available NOW this wonderful one bedroom flat is a must see.

# To Let: £2,200 per month



Seymour Green, 483 Merton Road, London SW18 5LE

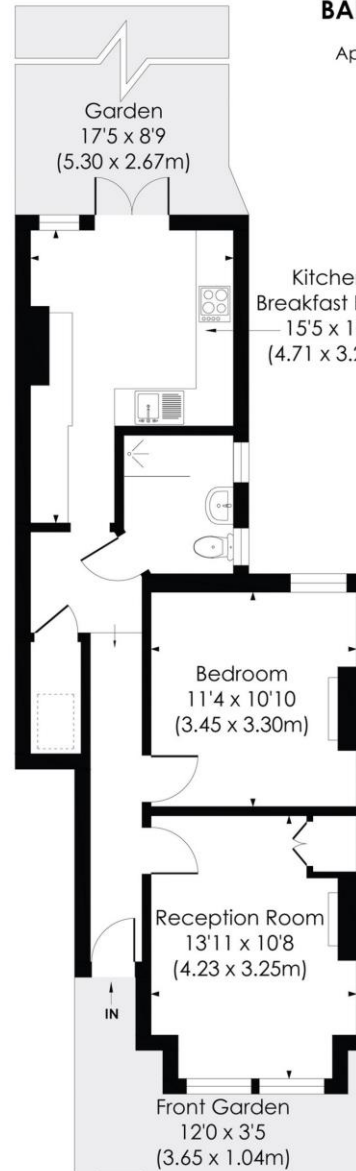
T: 020 8870 0111 F: 020 3302 9598 E: [southfields@seymour-green.co.uk](mailto:southfields@seymour-green.co.uk) W: [seymour-green.co.uk](http://seymour-green.co.uk)



**SEYMOURGREEN**  
AT THE HEART ♥ OF YOUR MOVE

## BALVERNIE GROVE, SW18

Approx. Gross Internal Floor Area  
**560 Sq. ft/52.02 Sq. m**



GROUND FLOOR

© Pixangle Property Marketing Ltd. info@pixangle.com Tel: 0208 870 2118

**pixangle**  
PROPERTY MARKETING

This floor plan has been prepared for the purpose of illustration only in accordance with the latest RICS code of measuring practice and is not to scale. All measurements and areas are approximate and whilst every effort has been made to ensure the accuracy of the plan contained here, no responsibility is taken for any error, omission or misstatement.



SEYMOURGREEN  
AT THE HEART ♥ OF YOUR MOVE

# Balvernie Grove, Southfields, London, SW18 To Let: £2,200 per month



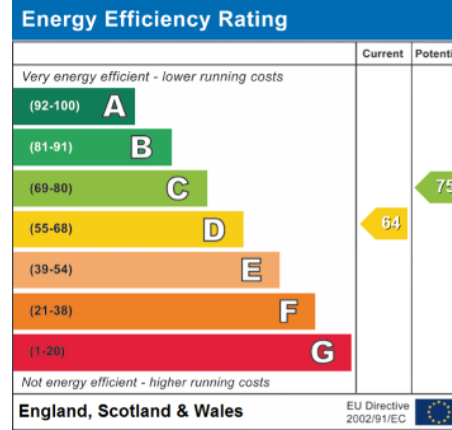
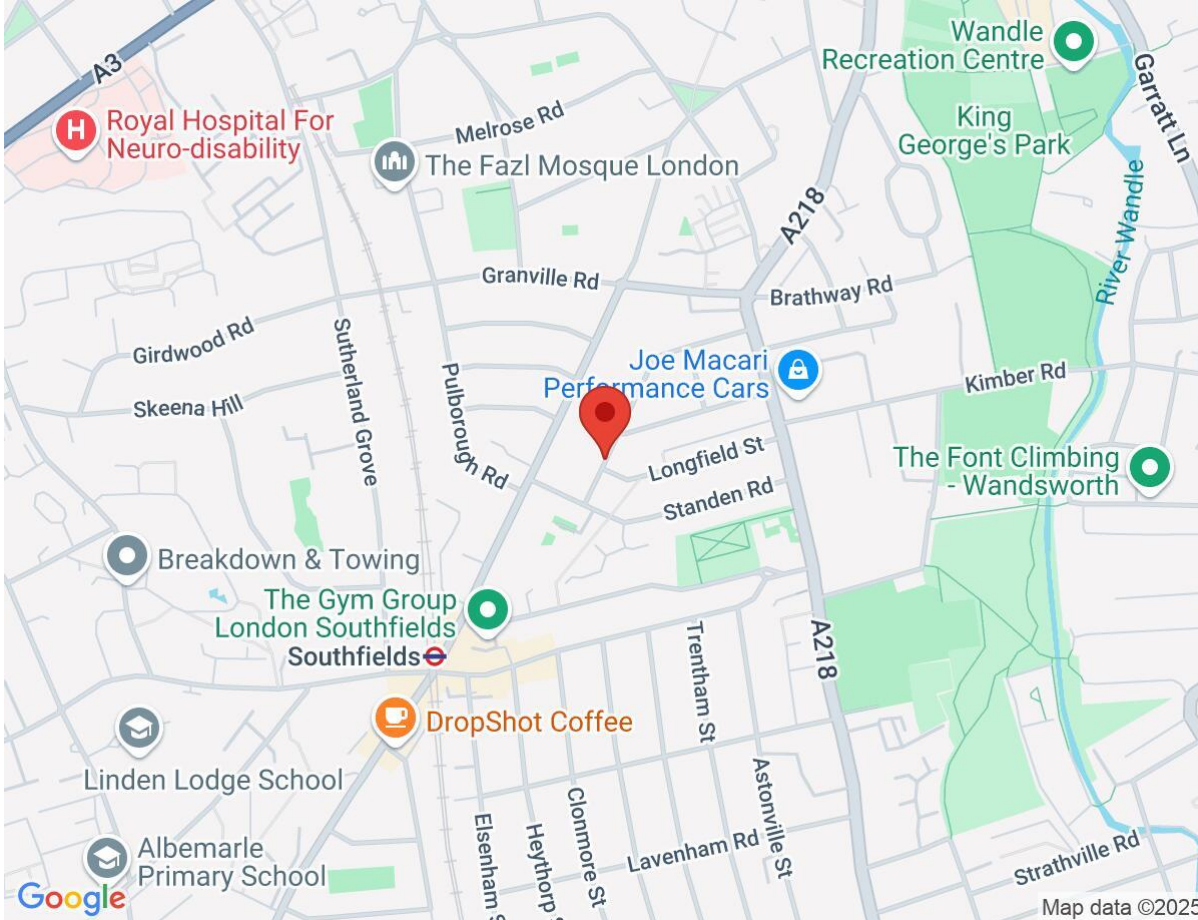
Seymour Green, 483 Merton Road, London SW18 5LE  
T: 020 8870 0111 F: 020 3302 9598 E: [southfields@seymour-green.co.uk](mailto:southfields@seymour-green.co.uk) W: [seymour-green.co.uk](http://seymour-green.co.uk)



**SEYMOURGREEN**  
AT THE HEART ♥ OF YOUR MOVE

# Balvernie Grove, Southfields, London, SW18

## To Let: £2,200 per month



**IMPORTANT NOTICE**  
Descriptions of the property are subjective and are used in good faith as an opinion and NOT as a statement of fact. Please make further specific enquires to ensure that our descriptions are likely to match any expectations you may have of the property. We have not tested any services, systems or appliances at this property. We strongly recommend that all the information we provide be verified by you on inspection, and by your Surveyor and Conveyancer.

Seymour Green, 483 Merton Road, London SW18 5LE  
T: 020 8870 0111 F: 020 3302 9598 E: southfields@seymour-green.co.uk W: seymour-green.co.uk