



SEYMOURGREEN
AT THE HEART ♥ OF YOUR MOVE

Knightsley Walk, Wandsworth Town, London, SW18

- ♥ Gorgeous Apartment
- ♥ Two Double Bedrooms
- ♥ Underground Parking
- ♥ Fabulous Location
- ♥ Fourth Floor
- ♥ Two Bathrooms

A SUPERB FOURTH FLOOR apartment set within this highly sought after development located just moments from the RIVER THAMES and WANDSWORTH PARK. The apartment is beautifully presented throughout and feels like a real home with accommodation comprising two bedrooms, two bathrooms, spacious open plan living room, balcony and **ALLOCATED UNDERGROUND PARKING** this GORGEOUS apartment would make an ideal purchase for investor or homeowner alike.

For Sale: £595,000



Seymour Green, 483 Merton Road, London SW18 5LE

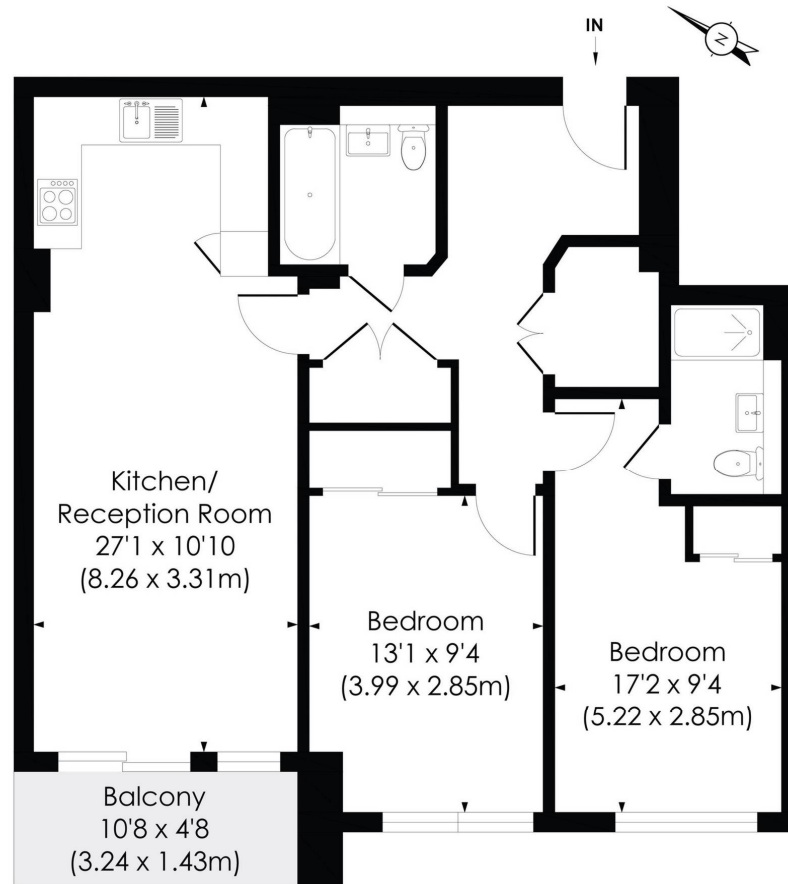
T: 020 8870 0111 F: 020 3302 9598 E: southfields@seymour-green.co.uk W: seymour-green.co.uk



SEYMOURGREEN
AT THE HEART ♥ OF YOUR MOVE

KNIGHTY WALK, SW18

Approx. Gross Internal Floor Area
826 Sq. ft/76.77 Sq. m



FOURTH FLOOR

© Pixangle Property Marketing Ltd. info@pixangle.com Tel: 0208 870 2118

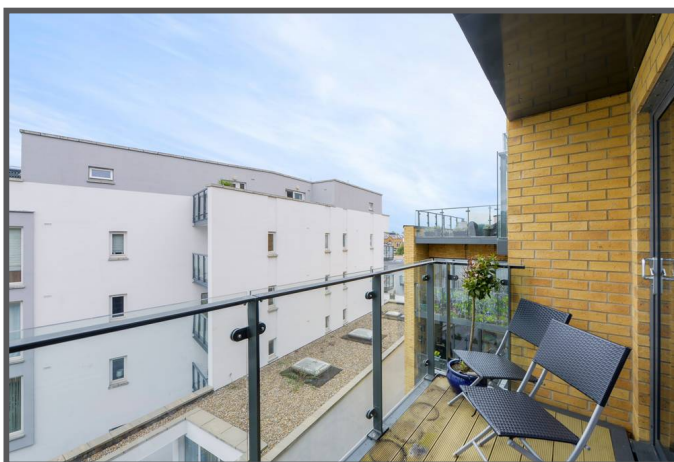
pixangle
PROPERTY MARKETING

This floor plan has been prepared for the purpose of illustration only in accordance with the latest RICS code of measuring practice and is not to scale. All measurements and areas are approximate and whilst every effort has been made to ensure the accuracy of the plan contained here, no responsibility is taken for any error, omission or misstatement.



SEYMOURGREEN
AT THE HEART ♥ OF YOUR MOVE

Knightley Walk, Wandsworth Town, London, SW18 For Sale: £595,000

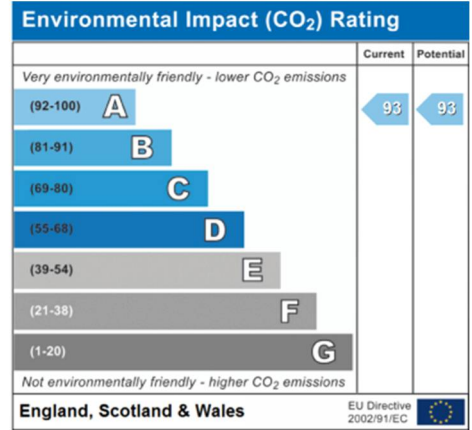
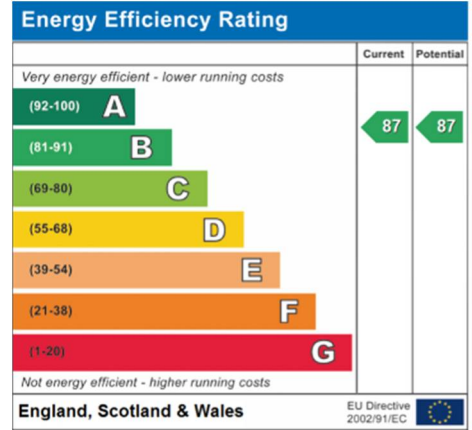


Seymour Green, 483 Merton Road, London SW18 5LE
T: 020 8870 0111 F: 020 3302 9598 E: southfields@seymour-green.co.uk W: seymour-green.co.uk



SEYMOURGREEN
AT THE HEART OF YOUR MOVE

Knightsley Walk, Wandsworth Town, London, SW18 For Sale: £595,000



IMPORTANT NOTICE
Descriptions of the property are subjective and are used in good faith as an opinion and NOT as a statement of fact. Please make further specific enquires to ensure that our descriptions are likely to match any expectations you may have of the property. We have not tested any services, systems or appliances at this property. We strongly recommend that all the information we provide be verified by you on inspection, and by your Surveyor and Conveyancer.

Seymour Green, 483 Merton Road, London SW18 5LE
T: 020 8870 0111 F: 020 3302 9598 E: southfields@seymour-green.co.uk W: seymour-green.co.uk